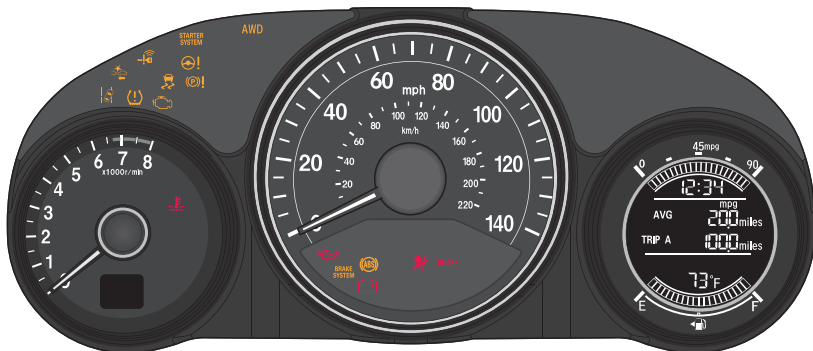


INSTRUMENT PANEL

Learn about the indicators, gauges, and displays related to driving the vehicle.



Indicators briefly appear with each engine start and then go out. Red and amber indicators are most critical. Blue and green indicators are used for general information.

Malfunction Indicators

These are the most critical indicators. If they come on and stay lit while driving or at any other time, there may be a problem. See your dealer if necessary.



Brake system

- Brake fluid is low.
- The brake system has a problem.

Press the brake pedal lightly to check pedal pressure. If normal, check the brake fluid level when you stop. If abnormal, take immediate action. If necessary, downshift the transmission to slow the vehicle using engine braking. Have your vehicle repaired immediately.



Low oil pressure

Engine oil pressure is low. Stop in a safe place. Open the hood. Check the oil level, and add oil if necessary. If the indicator does not turn off, have your vehicle repaired immediately.



Charging system

The battery is not charging. Turn off all electrical items, but do not turn off the vehicle to prevent further battery discharge. Have your vehicle repaired immediately.



Supplemental Restraint System (SRS)

There is a problem with one of the airbag systems or seat belt tensioners.

**Smart Entry system***

There is a problem with the smart entry system.

**Malfunction indicator lamp** (check engine light)

- The emissions control system may have a problem, or the fuel cap is loose or missing.
- (Blinks) A misfire in the engine's cylinders is detected. Stop in a safe place, and wait for the engine to cool down.

**Anti-lock Brake System (ABS)**

There is a problem with the anti-lock brake system. Your vehicle still has normal braking ability, but no anti-lock function.

**Tire Pressure Monitoring System (TPMS)** (U.S. models only)

There is a problem with the tire pressure monitoring system, or the vehicle is fitted with the compact spare tire.

**Forward Collision Warning (FCW)*** (Canadian models only)

There is a problem with the FCW system.

**Lane Departure Warning (LDW)*** (Canadian models only)

There is a problem with the LDW system.

**Vehicle Stability Assist (VSA)[®]**

There is a problem with the VSA system or hill start assist system.

**Brake system**

There is a problem with the automatic brake hold system.

**Electric parking brake system**

There is a problem with the electric parking brake system. Avoid using the parking brake. Have your vehicle inspected immediately.

**Electric Power Steering (EPS)**

There is a problem with the EPS system. Stop in a safe place, and restart the vehicle.

**Starter system***

There is a problem with the starter system.

**All Wheel Drive (AWD)***

There is a problem with the AWD system. If the indicator blinks, the system is overheated and inactive. Stop in a safe place, and idle until the indicator goes off.

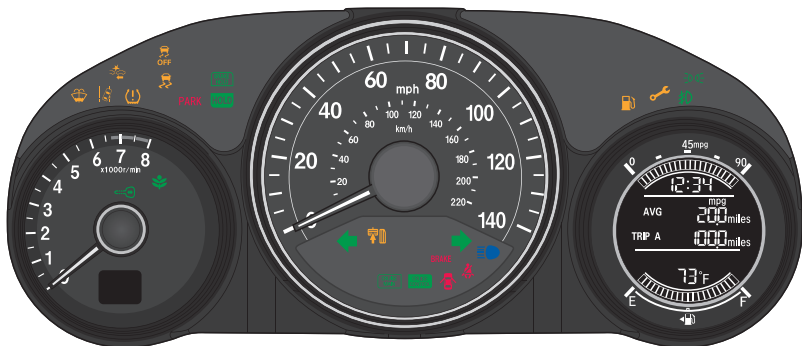
**High temperature**

The engine coolant temperature is high. Drive slowly to prevent overheating. If the indicator remains on, immediately stop the vehicle in a safe place (see page 104).



Low temperature

The engine coolant temperature is low. If the indicator remains on, there may be a problem with temperature sensors.



Condition Indicators

These indicators may require you to perform an action.



Parking brake

Release the parking brake before driving. You will hear a beep if you drive with it not fully released.



Seat belt reminder

Make sure seat belts are fastened for you and all passengers. The indicator blinks and beeps sound continuously if you or your front passenger has not fastened your seat belts when you begin driving. If the indicator remains on after seat belts are fastened, see your dealer.



Door/tailgate open

A door or the tailgate is open.



Low fuel

Refuel as soon as possible. If the indicator blinks, there is a problem with the fuel gauge. See your dealer.



Low tire pressure

Stop in a safe place, check tire pressures, and inflate tire(s) if necessary. If the indicator remains on after tire inflation, you need to calibrate the system (see page 106). The indicator also appears if your vehicle is fitted with the compact spare tire. Have your regular tire repaired or replaced as soon as possible.



Lane Departure Warning (LDW)* (Canadian models only)

(Blinks) Take appropriate action to keep the vehicle within the lane.

**Washer fluid level** *(Canadian models only)*

Washer fluid is low. Refill the reservoir (see page 123).

**Brake depress**

- During automatic brake hold operation, the automatic brake hold button is pressed without pressing the brake pedal. Make sure you press the brake pedal.
- (Blinks) Automatic brake hold is canceled during operation. Immediately press the brake pedal.

**Forward Collision Warning (FCW)*** *(Canadian models only)*

(Blinks) The system detects a likely collision with a vehicle in front of you, and a beep sounds. Take appropriate action to prevent a collision.

**Maintenance Minder™**

Scheduled maintenance for your vehicle is due.

**Immobilizer**

Your key or remote transmitter cannot be recognized by the vehicle. If the indicator blinks, you may not be able to start the engine. Turn the vehicle off, and then on again. If it continues to blink, there may be a problem with the system. See your dealer.

On/Off Indicators

These indicators remind you when an item is on or off.



VSA off



Exterior lights on



VSA on (blinks)



ECON mode* on



CRUISE MAIN on



Brake hold system on



CRUISE CONTROL on



Brake hold activated



Turn signals/hazards on



Electric parking brake on



Fog lights* on



FCW* off



High beams on



LDW* off