

## BLUETOOTH® HANDSFREELINK® (HFL)(if equipped)

Place and receive phone calls through your vehicle's audio system. Visit [handsfreelink.honda.com](http://handsfreelink.honda.com) to check if your phone is compatible.

**To prevent driver distraction, certain manual and touch screen functions may be inoperable or grayed out while the vehicle is moving. Voice commands are always available.**

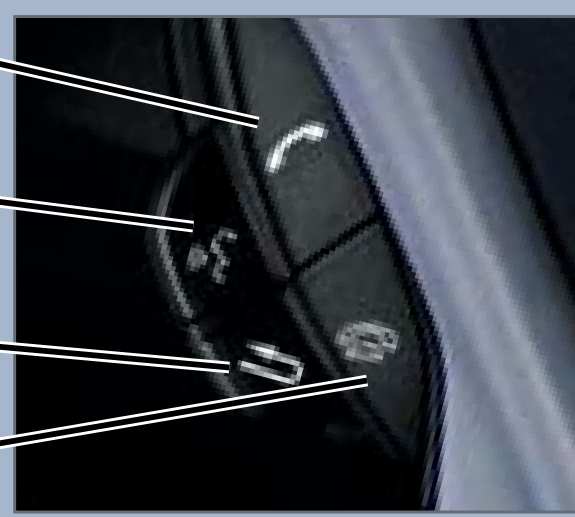
### How to Use HFL

**Pick-Up button:** Answer an incoming call, or go directly to the Phone screen.

**Talk button:** Give navigation, HFL, or audio commands.

**Back button:** Cancel a command and return to the previous screen.

**Hang-Up:** End a call or decline a call.



### Pairing Your Phone

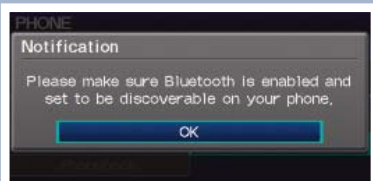
Use this pairing method when no phone has ever been paired to the system. You can only pair your Bluetooth-compatible phone when the vehicle is stopped.

Press and release the Talk button before you give a command.

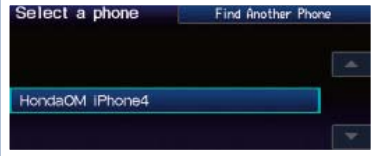
1. **Press** the Pick-Up button to go to the Phone screen. A prompt appears. **Say** "Yes."



2. Make sure your phone is in discovery mode, and **say** "OK."

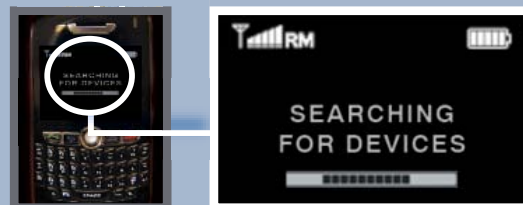


3. HFL searches for your phone. **Select** it when it appears on the list. **Go** to step 4.

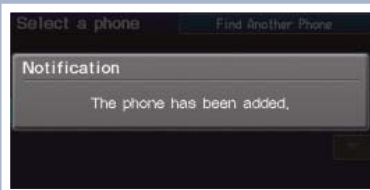


If your phone does not appear:

**Select** "Find Another Phone" and **search** for a HandsFreeLink device from your phone. **Connect** to HFL. **Go** to step 4.



4. HFL gives you a four-digit code. **Enter** it on your phone when prompted. The phone is now paired.

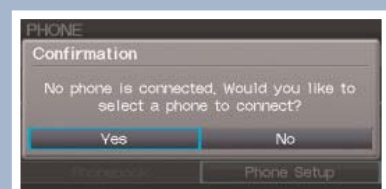


### Pairing Your Phone (continued)

Use this pairing method when a phone has already been paired to the system, or when you want to pair an additional phone.

Press and release the Talk button before you give a command.

1. **Press** the Pick-Up button to go to the Phone screen.



If a prompt appears asking to connect to a phone, **say** "No" and go to step 2.

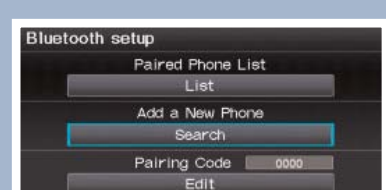
2. **Say** "Phone setup."



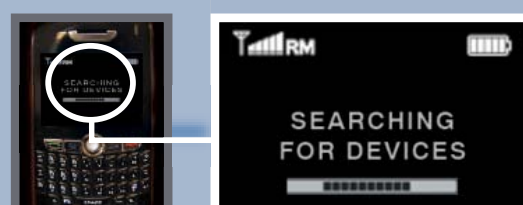
3. **Say** "Bluetooth setup add select a phone."



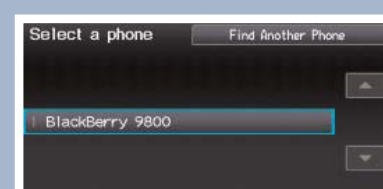
4. **Say** "Search."



5. Make sure your phone is in Discovery mode, and **say** "OK."



6. HFL searches for your phone. **Say** the number next to the phone when it appears on the list.



If your phone does not appear:

**Say** "Find Another Phone" and **search** for HandsFreeLink from your phone. **Connect** to HFL.



7. HFL gives you a four-digit code. **Enter** it on your phone when prompted. The phone is now paired.



### Driver Distraction

To reduce the potential for driver distraction, certain functions may be inoperable or grayed out while the vehicle is moving. You may have to use voice commands, stop or pull over to perform the function.

The chart below shows a list of some operations that are restricted while the vehicle is moving.

Function	Restriction Level While Driving
<b>HFL System (Without Navigation)</b>	
10-key dial	Restricted
Phonebook	Restricted
Speed dial	Not restricted
Speed dial setup	Restricted
Call history	Not restricted
Call history scroll	Not restricted
Redial	Not restricted
Connect to a new phone	Restricted
Connect to a previously paired phone	Not restricted
Manual dial tones	Restricted
Read text	Restricted
Reply to text	Not restricted
<b>HFL System (With Navigation)</b>	
10-key dial	Voice command only
Phonebook	Voice command only. Limited to three screens
Speed dial	Not restricted
Speed dial setup	Restricted
Call history	Not restricted
Call history scroll	Voice command only. Limited to three screens
Redial	Not restricted
Connect to new phone	Restricted