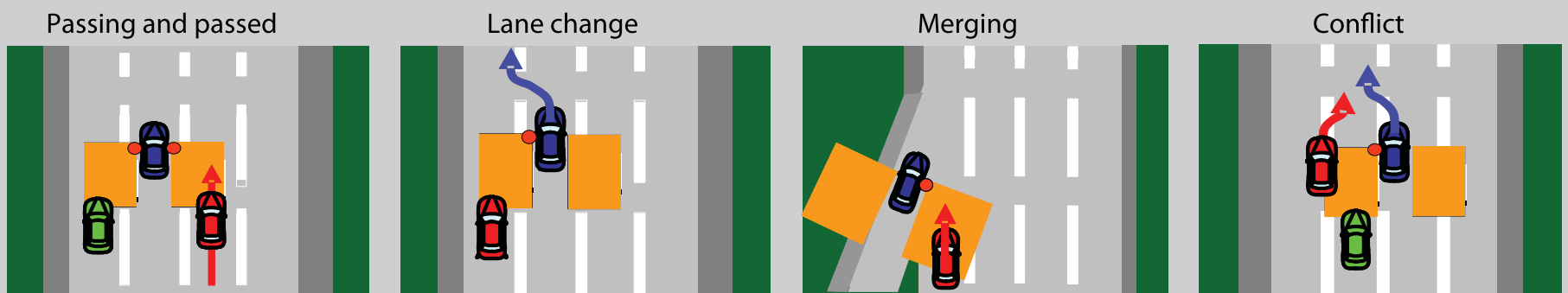


BLIND SPOT INFORMATION SYSTEM (BSI) (ELITE only)

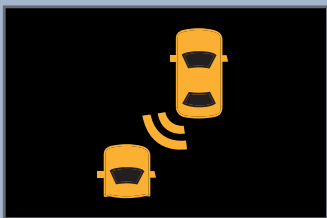
Assists you in determining if there are detected vehicles in your blind spots.

How It Works

A radar sensor on each corner of the rear bumper alerts you when it detects a vehicle in your left or right blind spots.



When a vehicle is detected in your blind spot, the blind spot indicator turns on and stays lit until the area is clear.



When your turn signal is on and a vehicle is detected, the blind spot indicator blinks until the area is clear or the turn signal is off.



Left BSI indicator shown

Turning the System On and Off

Press and hold the BSI OFF button on the dashboard to turn BSI off or on.



A message briefly appears on the MID screen showing the system status.

