

INSTRUMENT PANEL

Learn about the indicators, gauges, and displays related to driving the vehicle.



Indicators briefly appear with each engine start and then go out. Red and amber indicators are most critical. Blue and green indicators are used for general information.

Malfunction Indicators

These are the most critical indicators. If they come on and stay lit while driving or at any other time, there may be a problem. See your dealer if necessary.



U.S. Brake system

- Brake fluid is low.



- The brake system has a problem.

Press the brake pedal lightly to check pedal pressure. If normal, check the brake fluid level when you stop. If abnormal, take immediate action. If necessary, downshift the transmission to slow the vehicle using engine braking. Have your vehicle repaired immediately.



Low oil pressure

Engine oil pressure is low. Stop in a safe place. Open the hood. Check the oil level, and add oil if necessary. If the indicator does not turn off, have your vehicle repaired immediately.



Charging system

The battery is not charging. Turn off all electrical items, but do not turn off the vehicle to prevent further battery discharge. Have your vehicle repaired immediately.



Supplemental Restraint System (SRS)

There is a problem with one of the airbag systems or seat belt tensioners.



Smart Entry system*

There is a problem with the smart entry system.



Malfunction indicator lamp (check engine light)

- The emissions control system may have a problem, or the fuel cap is loose or missing.
- (Blinks) A misfire in the engine's cylinders is detected. Stop in a safe place, and wait for the engine to cool down.



Anti-lock Brake System (ABS)

There is a problem with the anti-lock brake system. Your vehicle still has normal braking ability, but no anti-lock function.



Tire Pressure Monitoring System (TPMS)*

There is a problem with the tire pressure monitoring system, or the vehicle is fitted with the compact spare tire.



High temperature

Blinks when the engine coolant temperature goes up, and stays on if the temperature continues to rise. Drive slowly or pull over to prevent overheating.



Low temperature

The engine coolant temperature is low. If the indicator stays on, there may be a problem with the temperature sensors.



Daytime Running Lights (DRL)*

There is a problem with the DRL system.



Vehicle Stability Assist (VSA®) system

There is a problem with the VSA system.



U.S. Brake system

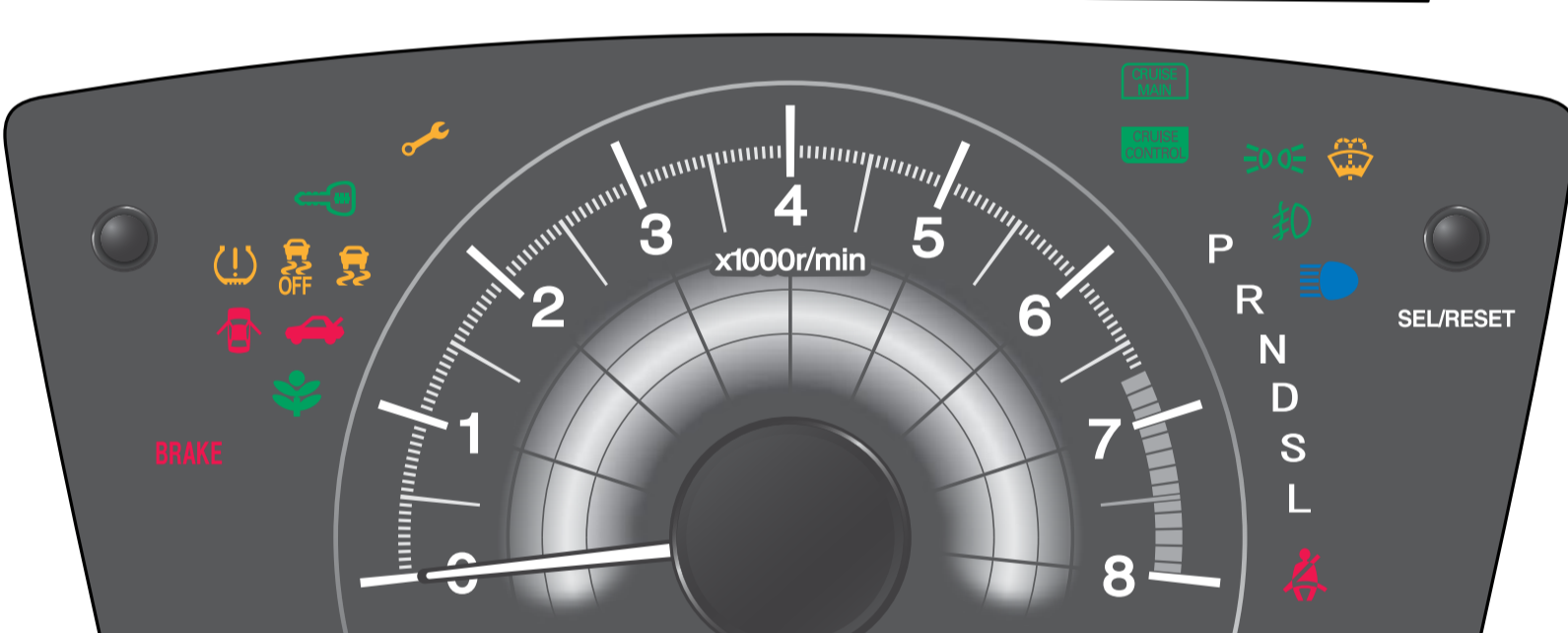
There is a problem with the brake system.



Electric Power Steering (EPS)

There is a problem with the EPS system.

**if equipped*



Condition Indicators

These indicators may require you to perform an action.



U.S. Parking brake

Release the parking brake before driving. You will hear a beep if you drive with it not fully released.



Seat belt reminder

Make sure seat belts are fastened for you and all passengers. The indicator blinks and beeps sound continuously if you or your front passenger has not fastened your seat belts when you begin driving. If the indicator remains on after seat belts are fastened, see your dealer.



Door open

A door is not closed. A beep sounds while driving.



Trunk open

The trunk is not closed.



Low fuel

Refuel as soon as possible. If the indicator blinks, there is a problem with the fuel gauge. See your dealer.



Low tire pressure*

Stop in a safe place, check tire pressures, and inflate tire(s) if necessary. The indicator also appears if your vehicle is fitted with the compact spare tire. Have your regular tire repaired or replaced as soon as possible.



Washer fluid level (Canadian models)*

The washer fluid is low. Refill the washer fluid.



System message*

When a condition or malfunction indicator comes on, a message also appears on the multi-information display. Check the display for more information.



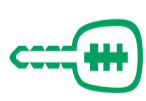
Vehicle Stability Assist (VSA®) system

(Blinks) VSA is active.



Maintenance Minder™*

Scheduled maintenance for your vehicle is due.



Immobilizer

Your key or remote transmitter cannot be recognized by the vehicle. If the indicator blinks, you may not be able to start the engine. Turn the vehicle off, and then on again. If it continues to blink, there may be a problem with the system. See your dealer.

**if equipped*

On/Off Indicators

These indicators remind you when an item is on or off.



VSA off



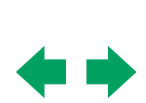
Fog lights* on



CRUISE MAIN on



High beams on



CRUISE CONTROL on



Exterior lights on



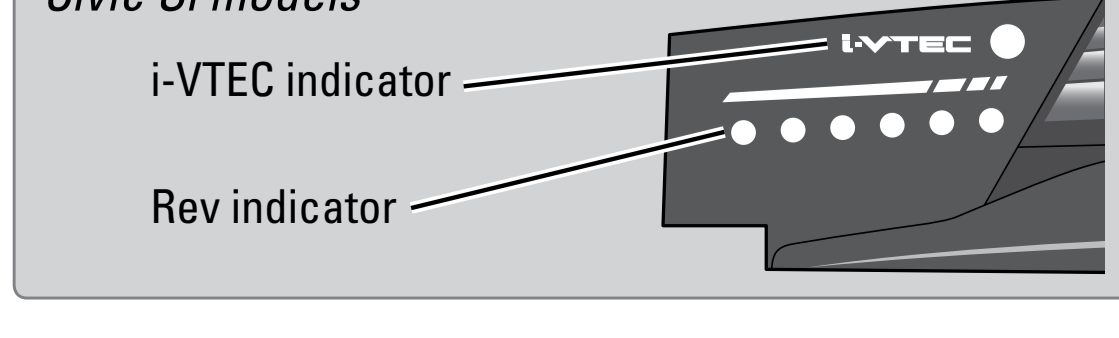
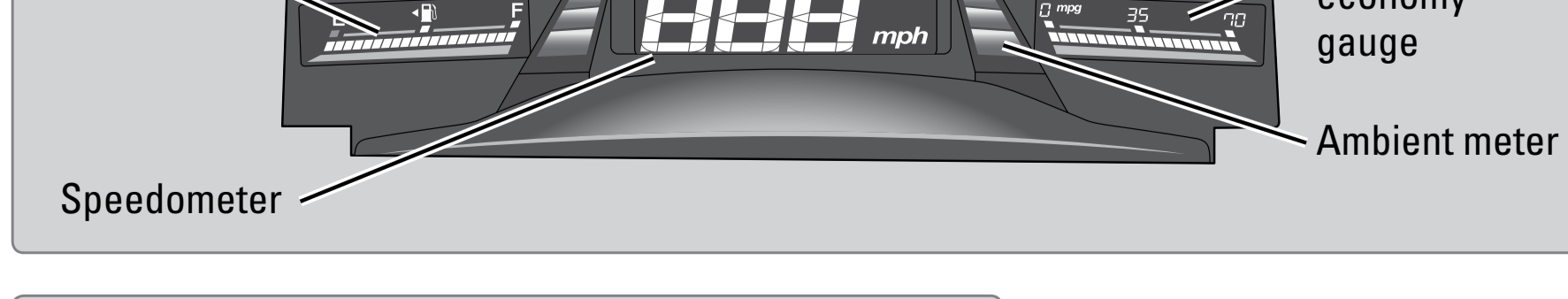
Turn signals/hazards on



ECON mode* on

Gauges

These gauges include speed and fuel information.



**if equipped*