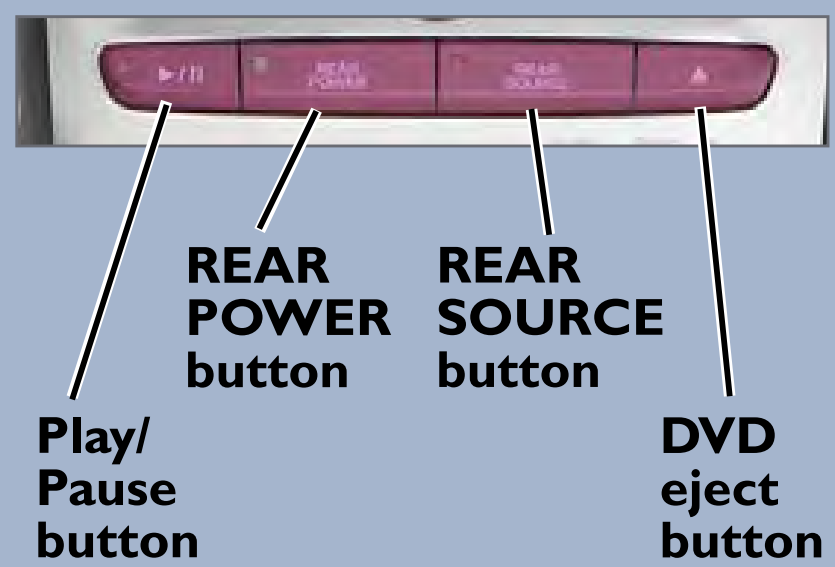


## REAR ENTERTAINMENT SYSTEM (RES) (if equipped)

Rear passengers can enjoy a different entertainment source than front passengers.

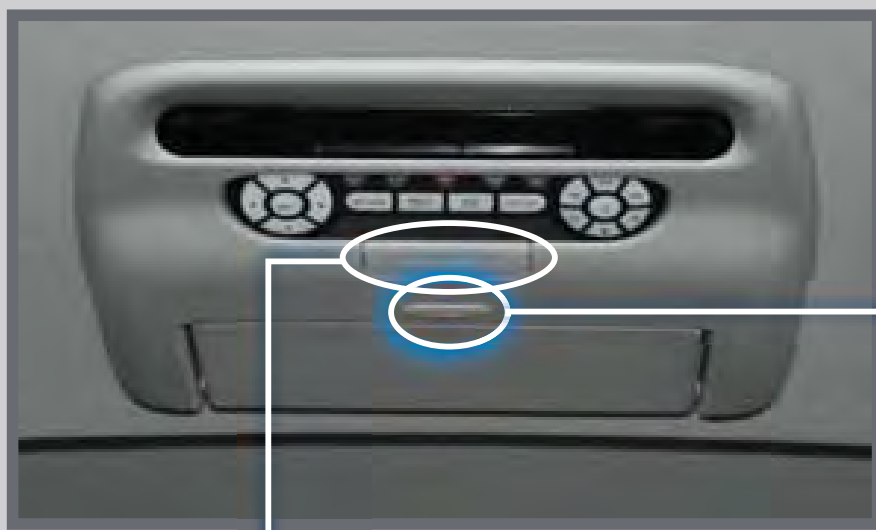
### Front System Operation



### Front Controls

1. Press REAR POWER to turn the system on.
2. Press REAR SOURCE.
3. Select an entertainment source for the rear passengers (AM/FM, DVD, etc.).
4. Press REAR SOURCE again to return to playing front audio.

### Rear Entertainment System



Press RELEASE to detach the remote control, if desired.

Press OPEN to release the overhead screen.



Extend the overhead screen until it locks into place.

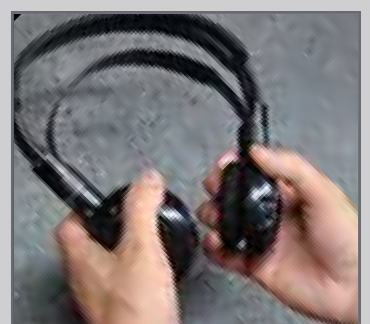
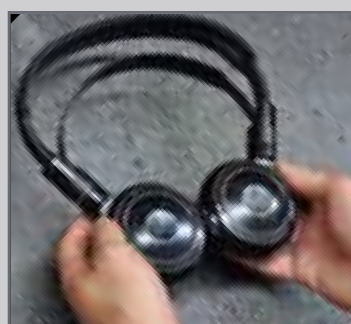


### Rear Controls

1. Make sure REAR POWER is on in the front audio controls.
2. Open the overhead screen and lock it into place. Retrieve the wireless headphones.
3. On the remote control, press DVD/AUX, CD/CDL, XM, or FM/AM.
4. Press (▲) (▼) (◀) (▶) to navigate menu options. Press ENT to select an option.

### Headphone Operation

Your vehicle comes with two sets of wireless headphones. Pivot the earpieces to turn on or off. Wireless headphones only work in the rear seats.



Wired headphones may also be used. Plug them into the headphone connector jacks on the back of the center console.

