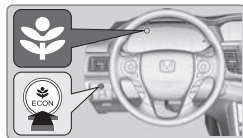


## Eco Assist System

Can help improve fuel economy by adjusting the performance of the engine, transmission, climate control system, and cruise control.

### ■ ECON Button

Press the ECON button to turn the system on or off. The ECON Mode indicator and a message in the multi-information display\* appear when the system is turned on.



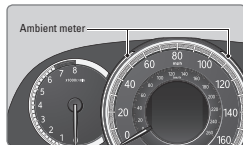
### ■ Ambient Meter

Color-coded bars change based on your driving style and brake or accelerator pedal operation.

**Green:** Fuel-efficient driving

**Light green:** Moderate acceleration/deceleration

**White:** Aggressive acceleration/deceleration



*\*if equipped*