

# AUDIO AND CONNECTIVITY

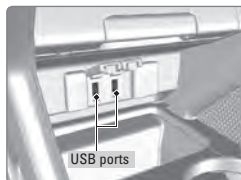
Learn how to operate the vehicle's audio system.

## Basic Audio Operation

Connect audio devices and operate buttons and displays for the audio system.

### ■ USB Ports

1. Open one of the USB covers in the front console.
2. Insert a USB flash drive or connect another audio device, such as an iPod® or iPhone®, into the USB port.



*iPod and iPhone are trademarks of Apple, Inc. State, provincial, or local laws may prohibit the operation of handheld electronic devices while operating a vehicle.*

### ■ Accessory Power Socket

Open the socket cover in the front console to use power when the vehicle is on.



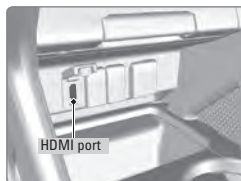
### NOTICE

Do not insert an automotive type cigarette lighter element. This can overheat the power socket.

### ■ HDMI Port

You can play video from a compatible device while your vehicle is stopped. From the connected device, launch the video you want to display on the touchscreen. The device or video resolution must be 720p or lower to view.

1. Open the HDMI cover in the front console.
2. Insert an HDMI cable into the HDMI port.



*Additional cables and connectors sold separately.*

## ■ Steering Wheel Controls

You can operate certain functions of the audio system using the steering wheel controls.

**MODE button:** Cycle through available audio modes.

**VOL (▲/▼) buttons:** Adjust audio volume.

**CH (+/-) buttons:** Change presets, tracks, albums, or folders.



### FM/AM Radio

Press (+) or (-) for the next or previous station.

Press and hold (+) or (-) for the next or previous strong station.

### CD/iPod®/USB/Bluetooth® Audio

Press (+) or (-) for the next or previous track.

Press and hold (+) or (-) for the next or previous folder (CD/USB).

### Pandora® (U.S. only)

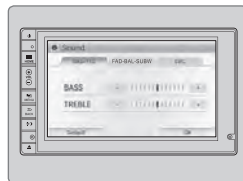
Press (+) for the next song.

Press and hold (+) or (-) for the next or previous station.

## ■ Adjusting the Sound

Adjust various sound settings. Use the touchscreen to make selections.

1. From the HOME screen, select Settings.
2. Select Audio.
3. Select Sound.
4. Select the tabs to change the sound mode and adjust the setting.
5. Select OK when complete.

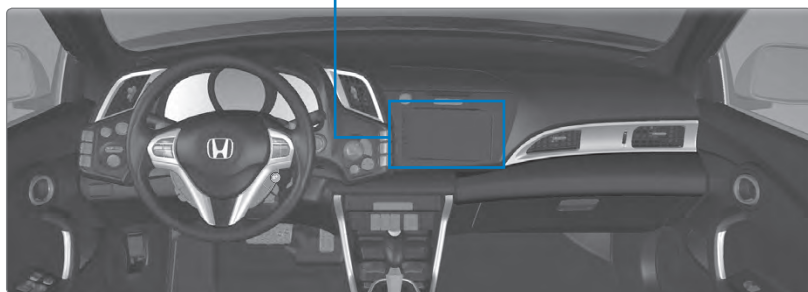
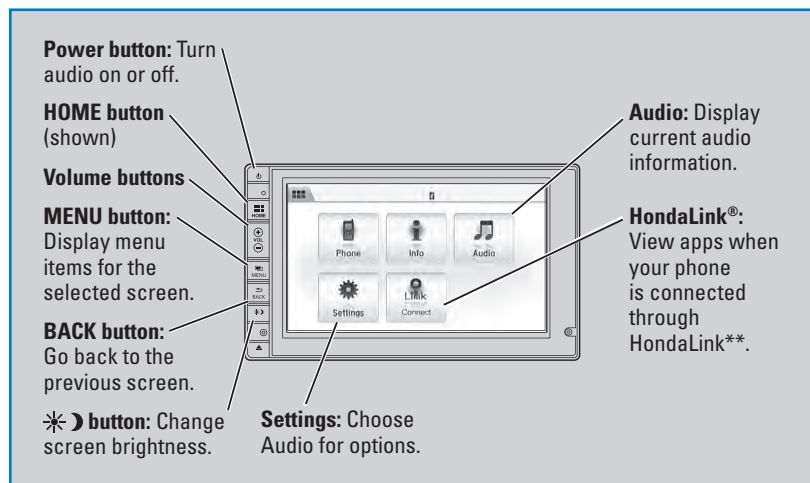


## Touchscreen Operation

Use simple gestures—including touching, swiping, and scrolling—to operate certain audio functions.

Some items may be grayed out during driving to reduce the potential for distraction. You can select them when the vehicle is stopped or use voice commands\*.

Wearing gloves may limit or prevent touchscreen response.



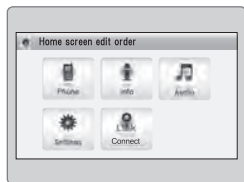
\*if equipped

\*\*HondaLink can be accessed only if the app is installed on your smartphone, and the phone is connected to the system (see page 43).

## ■ Changing Icon Order

You can change the order of the icons on the HOME screen.

1. From the HOME screen, select Settings.
2. Select System.
3. Select Home.
4. Select Home Screen Edit Order.
5. Select and hold the icon you want to move and slide it to a different position.



## HondaLink®

You can connect a compatible smartphone to the audio system to enable integration between the smartphone's approved apps and the vehicle. This allows you to control the phone's apps through the touchscreen.

To check smartphone compatibility and connection instructions, visit [handsfreelink.com](http://handsfreelink.com) (U.S.) or [handsfreelink.ca](http://handsfreelink.ca) (Canada).

To get more information on HondaLink features and apps, visit [www.hondalink.com](http://www.hondalink.com) (U.S.) or [honda.ca/handsfreelink](http://honda.ca/handsfreelink) (Canada).

### FM/AM Radio

Play FM or AM radio stations.

**Source:** Select the FM or AM icon.

**Scan:** Scan for each station with a strong signal.

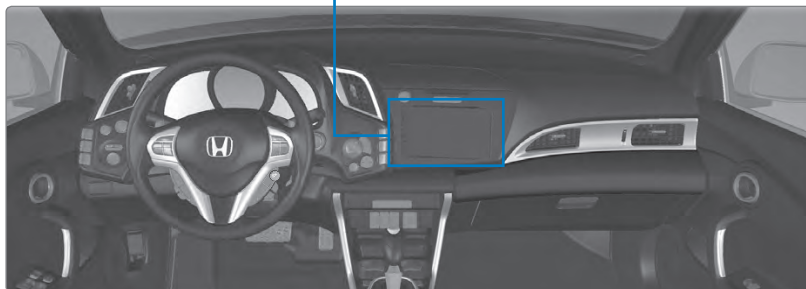


**Open/close:** Display or hide the station list or preset list.

**Seek:** Search for the next or previous station with a strong signal.

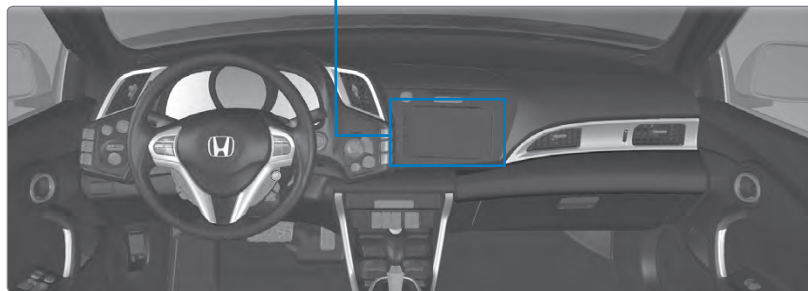
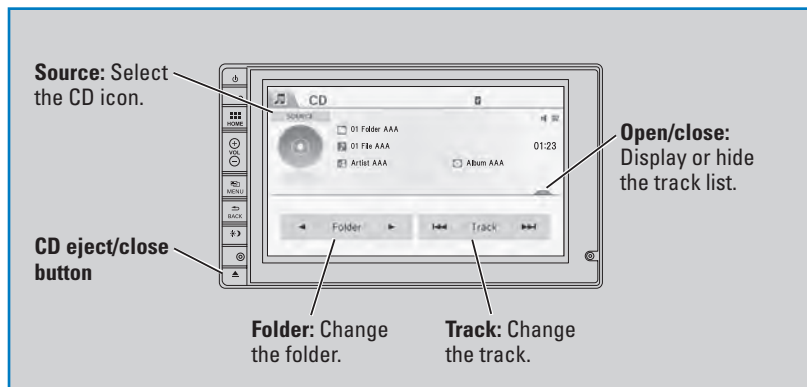
**Tune:** Change the station.

**Presets:**  
Select and hold a preset number to store the current station.  
Select a preset number to select a previously stored station.



## Compact Disc (CD)

The audio system supports audio CDs, CD-Rs, and CD-RWs in MP3, WMA, or AAC formats. Press the eject/close button to fold down the screen and insert a disc. Press it again to return the screen to its original position

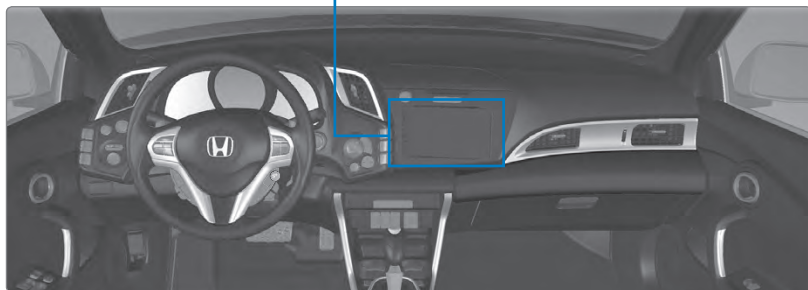
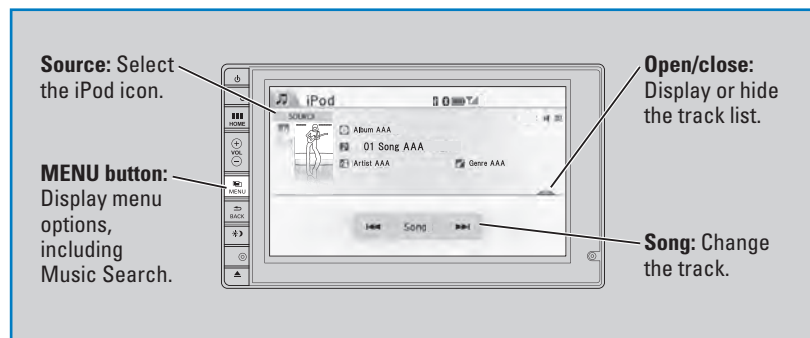


### NOTICE

Do not use CDs with adhesive labels or insert a damaged CD. Inserting these types of CDs may cause them to get stuck or damage the audio unit.

## iPod®

Play and operate an iPod through the vehicle's audio system. Connect your device to the USB port (see page 40).



## ■ Searching for Music

Use the touchscreen to search for tracks stored on the iPod.

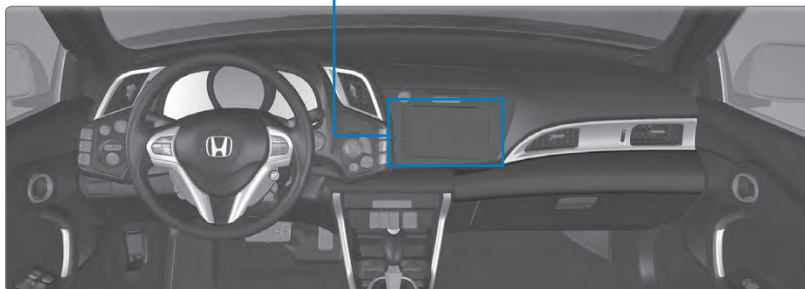
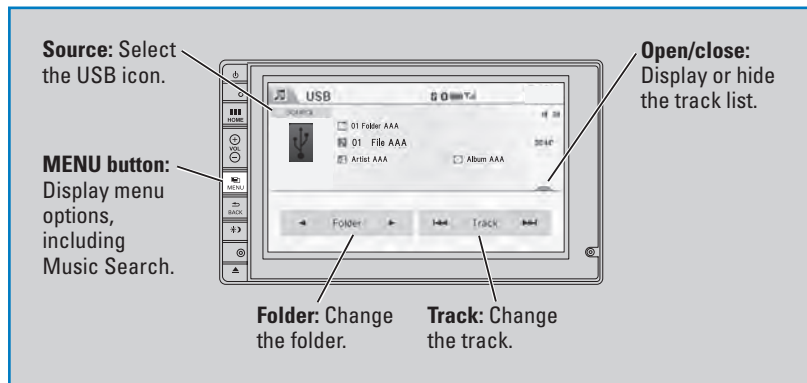
1. From the audio screen, press the MENU button.
2. Select Music Search.
3. Select a search option.
4. Select the track you want to play.



On vehicles with navigation, you can also search for and play iPod music using Song By Voice™ (see page 117).

## USB Flash Drive

Play and operate a USB flash drive through the vehicle's audio system. Connect your device to the USB port (see page 40).



### ■ Searching for Music

Use the touchscreen to search for tracks stored on the USB flash drive.

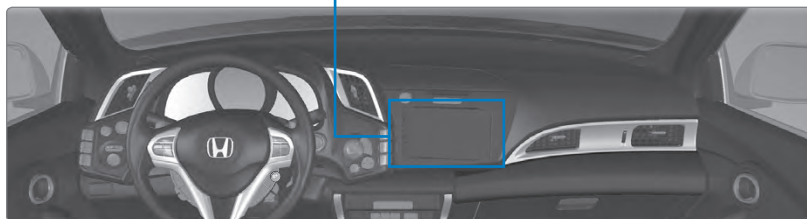
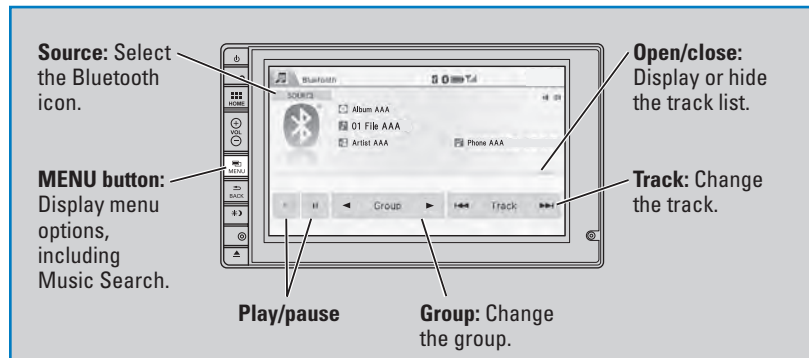
1. From the audio screen, press the MENU button.
2. Select Music Search.
3. Select a folder.
4. Select the track you want to play.



On vehicles with navigation, you can also search for and play USB music using Song By Voice™ (see page 117).

## Bluetooth® Audio

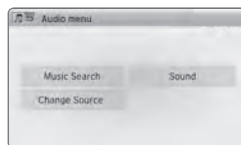
Play streaming or stored audio from your compatible phone through the vehicle's audio system. Visit [handsfreelink.com](http://handsfreelink.com) (U.S.) or [handsfreelink.ca](http://handsfreelink.ca) (Canada) to check phone compatibility. Standard data rates apply with your phone service provider. Connect your phone to **Bluetooth® HandsFreeLink®** (see page 51).



### ■ Searching for Music

Use the touchscreen to search for tracks stored on the device.

1. From the audio screen, press the MENU button.
2. Select Music Search.
3. Select a search category.
4. Select the track you want to play.



### Notes:

- Make sure the volume on your phone is properly adjusted.
- You may need to enable additional settings on your phone for playback.
- The resume/pause function and remote audio controls are not supported on all phones.

*State, provincial, or local laws may prohibit the operation of handheld electronic devices while operating a vehicle. Only launch streaming audio on your phone when it is safe to do so.*