

Models with Display Audio

Pandora®*

Play and operate Pandora from your compatible phone through the vehicle's audio system. Visit [handsfreelink.com](https://www.handsfreelink.com) to check phone compatibility. Standard data rates apply with your phone service provider.

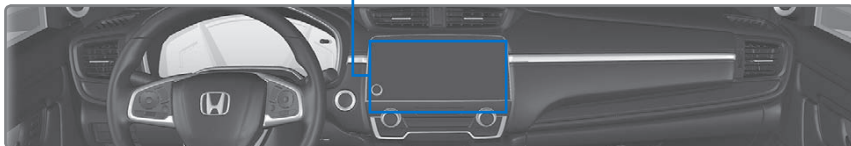
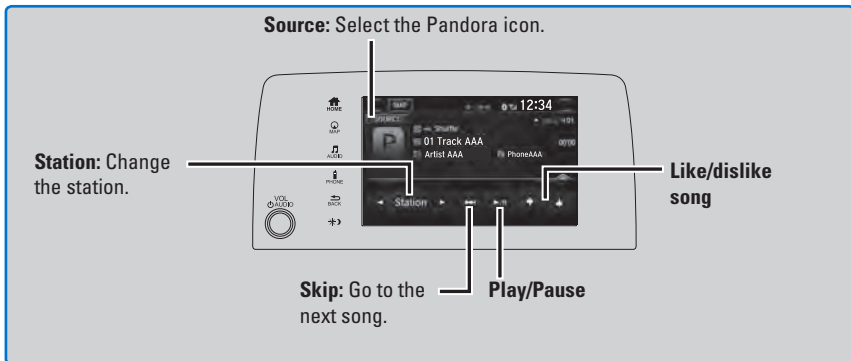
Connect your phone when the vehicle is stopped. Disruptions in your phone's cell signal can affect audio playback.

For iPhone:

- Connect via *Bluetooth* HandsFreeLink or USB port.
- A pop-up may appear on your phone requesting you to allow access for Pandora to be launched.
- If you cannot operate Pandora through the audio system, it may be streaming through *Bluetooth* Audio. Make sure Pandora is selected on the audio system.
- If Pandora still does not operate, try rebooting the phone and reconnecting the cable if necessary.

For other compatible smartphones:

- Connect via *Bluetooth* HandsFreeLink.
- If your phone is connected to Android Auto, Pandora is only available through the Android Auto interface. Visit the Android Auto website to check compatibility.



**If equipped*

Applicable laws may prohibit the operation of handheld electronic devices while operating a vehicle. Launch streaming audio on your phone only when safe to do so.