

VEHICLE CONTROLS

Learn about the various controls necessary for operating and driving the vehicle.

Using the Key or Remote Transmitter

Lock or unlock the doors and tailgate.

Tailgate button: Press to unlock the tailgate.

Panic button: Press and hold to sound the alarm for 30 seconds. Press again to cancel.



Lock button: Press to lock the doors and tailgate. Press again for audible verification.

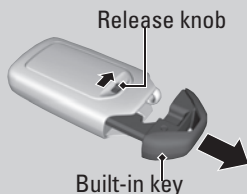
Unlock button: Press once to unlock the driver's door. Press again to unlock all doors and the tailgate.

Power tailgate button: Press and hold to unlock and open the power tailgate. Press again to close it.

Engine button: Remotely start the engine. See page 108.



Built-in key: Slide the release knob on the back of the transmitter and pull out the built-in key.



NOTICE

Leaving the key or remote transmitter in the vehicle can result in theft or accidental movement of the vehicle. Always take it with you whenever you leave the vehicle unattended.

**if equipped*

■ Customizing Door Lock Settings

Customize the auto door-lock setting to your preference. Begin with the vehicle off.

Models with information display

1.	Apply the parking brake	
2.	Position the driver's door	
	<i>To enable auto door lock:</i> close the driver's door	<i>To disable auto door lock:</i> open the driver's door
3.	Set your preference	
	Models with key ignition	Models with Smart Entry
	a. Set the ignition switch to ON	a. Push ENGINE START/STOP twice (do not press the brake pedal)
	b. Press the lock side of the master door lock switch until you hear a click (~ 5 sec.)	b. Press the lock side of the master door lock switch until you hear a click (~ 5 sec.)
	c. Set the ignition switch to ACC	c. Push ENGINE START/STOP twice (do not press the brake pedal)

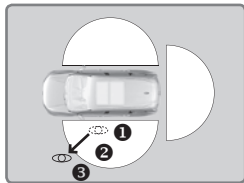
Walk Away Auto Lock

When you walk away from the vehicle while carrying the remote transmitter, the doors and trunk can automatically lock if the following conditions are met:

- The remote transmitter is within a range of 8 feet (2.5 m).
- All doors are closed.
- There is not an additional remote transmitter inside the vehicle.

Follow these steps (see diagram)

1. Exit the vehicle, close the door and stay near it. Listen for a beep. The system is activated.
2. Walk at least 8 feet (2.5 m) away.
3. Listen for a beep and look for the lights to flash. The doors lock.



To turn on this feature, follow these steps:

4. From the HOME screen, select Settings.
5. Select Vehicle.
6. Select Keyless Access Setup.
7. Select Walk Away Auto Lock.
8. Select Enable.