

# VEHICLE CONTROLS

Learn about the various controls necessary for operating and driving the vehicle.

## Using the Key or Remote Transmitter\*

Lock or unlock the doors and hatch.

**Unlock button:** Press once to unlock the driver's door. Press again to unlock all doors.

**Engine button\*:** Remotely start the engine (see page 95).



**Lock button:** Press to lock the doors. Press again for audible verification.

**Hatch button:** Press and hold to unlock the hatch.

**Panic button:** Press to sound the alarm for 30 seconds. Press again to cancel.

**Built-in key\*:** Slide the release knob on the back of the transmitter and pull out the built-in key.



Smart entry remote with remote engine starter.

### NOTICE

Leaving the key or remote transmitter in the vehicle can result in theft or accidental movement of the vehicle. Always take it with you whenever you leave the vehicle unattended.

\*if equipped

## ■ Walk Away Auto Lock\*

When you walk away from the vehicle while carrying the remote transmitter, the doors can automatically lock if the following conditions are met:

- All doors, the hatch and the hood are closed.
- There is not an additional remote transmitter inside the vehicle.
- You carry the transmitter more than 6 feet (2 m) from the vehicle.

While you are within the 6-foot (2 m) range, a beeper sounds to tell you the system is active. Go outside the range and the lights flash and a beep sounds. The doors and hatch then automatically lock.

To turn on this feature, follow the steps below:

1. From the HOME screen, select Settings.
2. Select Vehicle. The vehicle must be in Park (P).
3. Select Door/Window Setup.
4. Select Walk Away Auto Lock.
5. Select On.
6. Select BACK to exit the menus.

*\*if equipped*

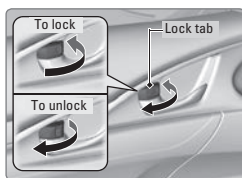
## Door Operation

Use several methods to lock or unlock the doors.

### ■ Using the Lock Tab

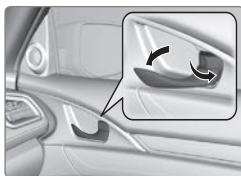
**To unlock:** Pull the lock tab rearward. When you unlock the door using the lock tab on the driver's door, only the driver's door unlocks.

**To lock:** Push the lock tab forward. When you lock the door using the lock tab on the driver's door, all the other doors and hatch lock at the same time.



### ■ Using the Front Door Inner Handle

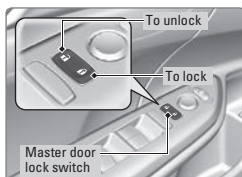
When you pull either front door inner handle, the door unlocks and opens. Unlocking and opening the driver's door from the inner handle unlocks all other doors.



### ■ Using the Master Door Lock Switch

**To unlock:** Press the unlock side of the switch to unlock all doors and the hatch.

**To lock:** Press the lock side of the switch to lock all doors and the hatch.

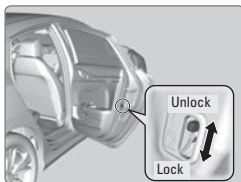


### ■ Childproof Door Locks

The childproof door locks prevent the rear doors from being opened from the inside regardless of the position of the lock tab.

Slide the lever in the rear door to the lock position, and close the door.

Open the door using the outer door handle.



### ■ Using the Hatch

**To unlock:** Press the hatch release button. This method works if all the doors are unlocked or you've pressed the hatch-unlock button on the remote transmitter.

**To lock:** Grab the inner handle and pull down. Then push from the outside.

