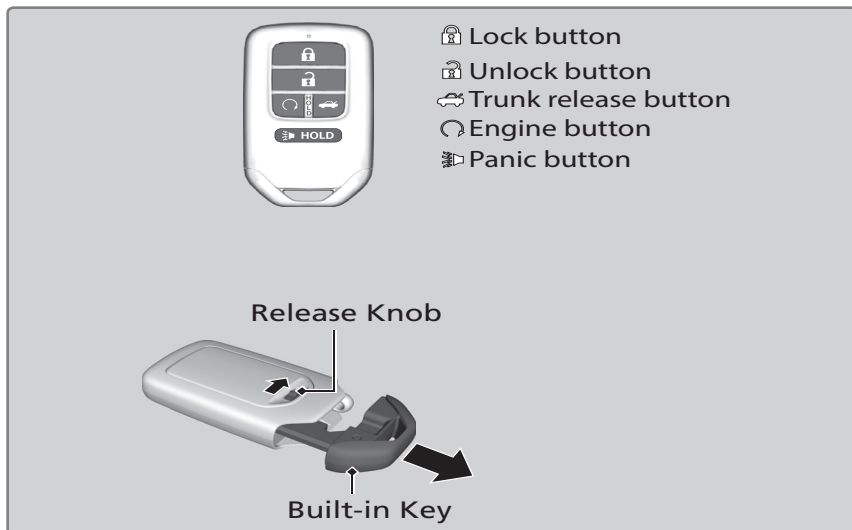


VEHICLE CONTROLS

Learn about the various controls necessary for operating and driving the vehicle.

Using the Smart Entry Remote

Lock or unlock the doors and trunk.



Locking the doors: Press the lock button once to lock all doors. Press twice to hear audible verification for setting the security alarm.

Unlocking the doors: Press once to unlock the driver's door and fuel fill door. Press twice to unlock remaining doors.

Unlocking the trunk: Press the trunk release button for approximately one second to unlock and open the trunk.

To engage panic mode: Press the panic button once to sound the panic alarm for approximately 30 seconds. Press any button on the remote transmitter to cancel panic mode.

To engage the remote engine start: Press the lock button, then press and hold the engine button to turn the power system on for up to 10 minutes.

NOTICE

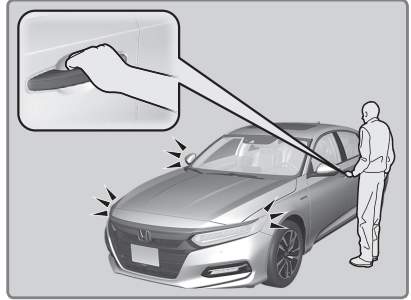
Leaving the smart entry remote in the vehicle can result in theft or accidental movement of the vehicle. Always take it with you whenever you leave the vehicle unattended.

Smart Entry System

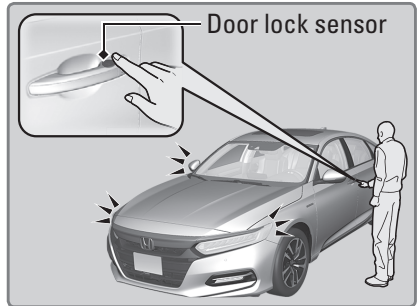
When you carry the smart entry remote, you can lock/unlock the doors, fuel fill door and open the trunk. You can lock/unlock the doors and fuel fill door within a radius of about 32 inches (80 cm) of the outside door handle. You can open the trunk within about 32 inches (80 cm) radius from the trunk release button.

■ Unlocking/Locking the Doors & Trunk

To unlock: Grab the driver's door handle when the vehicle is off to unlock the driver's door and fuel fill door. Grab the front passenger's door handle to unlock all doors.

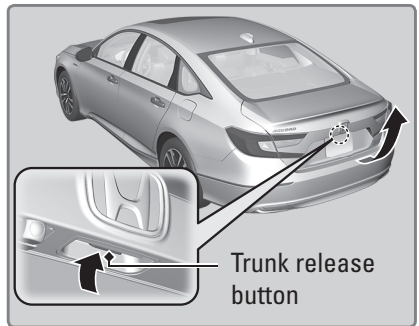


To lock: Touch the door lock sensor on the front door when the vehicle is off. If the smart entry remote is inside the vehicle, the doors will not lock.



■ Unlocking the Trunk

Press the trunk release button to unlock and open the trunk.



You can customize door locking and unlocking settings.

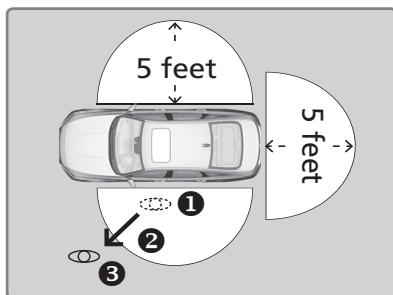
■ Walk Away Auto Lock

When you walk away from the vehicle while carrying the smart entry remote, the doors can automatically lock if the following conditions are met:

- The smart entry remote is within a range of 5 feet (1.5 m).
- All doors and the hood are closed.
- There is not an additional remote transmitter inside the vehicle.

Follow these steps (see diagram):

1. Carry the smart entry remote while you exit the vehicle. Close all the doors and stay near the vehicle. Listen for a beep. The system is activated.
2. Walk at least 5 feet (1.5 m) away.
3. Listen for a beep and look for the lights to flash. The doors lock.



Models with Color Audio:

To turn on this feature, follow these steps with vehicle stopped and the power mode set to ON:

1. Press the **MENU/CLOCK** button, then select **Settings**.
2. Select **Vehicle**.
3. Select **Door/Window Setup**.
4. Select **Walk Away Auto Lock**.
5. Select **On**.

Models with Display Audio:

To turn on this feature, follow these steps with the vehicle stopped and the power mode set to ON:

1. From the audio/information screen, select **Settings**.
2. Select **Vehicle**.
3. Select **Door/Window Setup**.
4. Select **Walk Away Auto Lock**.
5. Select **ON**.

HANDLING THE UNEXPECTED

Learn about what to do in critical or emergency situations.

Smart Entry Remote Battery Strength

If the beeper sounds, the **To Start, Hold Remote Near Start Button** message appears on the driver information interface, and the **POWER** button flashes, the **READY** indicator does not come on. Turn on the power system as follows:

1. Touch the center of the **POWER** button with the **H** logo on the smart entry remote while the **POWER** button is flashing. The buttons on the smart entry remote should be facing you.
2. Press the brake pedal and press the **POWER** button within 10 seconds after the beeper sounds and the **POWER** button changes from flashing to on.

