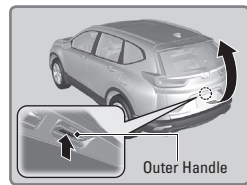


## Tailgate Operation\*

Use these methods to operate the tailgate.

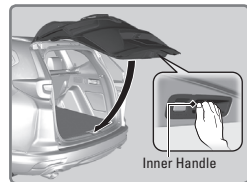
### ■ Opening the Tailgate

Press the tailgate release button and lift up the tailgate to open it.



### ■ Closing the Tailgate

Grab the inner handle and pull the tailgate down. Push it closed from the outside.



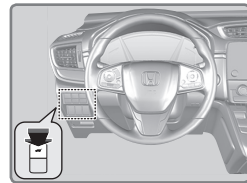
## Power Tailgate Operation\*

Use these methods to operate the power tailgate.

### ■ Power Tailgate Button

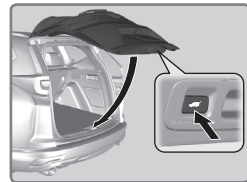
The vehicle must be in Park (P) with all doors unlocked.

Press the power tailgate button for about a second to open the tailgate. Press it again to stop. Press for about a second to then close it.



### ■ Tailgate Inner Button

Press the tailgate inner button to automatically close the tailgate. Press it again to stop. Press again to reverse the tailgate direction.



### ■ Manual Operation

You can adjust the tailgate position by hand. The tailgate will offer a measure of resistance while being moved, but this is normal.

*\*if equipped*

**⚠ WARNING**

Closing the power tailgate while anyone is in the path of the tailgate can cause serious injury.

Make sure everyone is away from the tailgate before closing it.

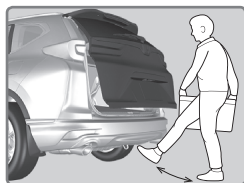
**NOTICE**

Do not push or pull on the power tailgate when it is being automatically opened or closed. Forcibly opening or closing the power tailgate while in operation can deform the tailgate frame.

**■ Hands Free Access\***

Use a forward and back kicking motion under the center of the rear bumper to open or close the power tailgate while carrying the smart entry remote.

*If you hold your foot under the bumper for too long, the power tailgate does not open or close.*

**■ Programmable Tailgate Position**

You can set the maximum opening of the tailgate to suit your needs.

1. Adjust the tailgate to your desired position.
2. Press and hold the tailgate inner button until you hear two short beeps and one long beep.

**Rear Cargo Cover\***

Conceal your cargo below a retractable cover.

The retracted roll is held in place by hooks at the left and right edges.

**Extending the cover:** Lift and pull the flap rearward to unhook the roll. Attach the cover to the slots on both sides of the tailgate opening. Do not place items on the cargo cover.

**Retracting the cover:** Remove the cover from the slots and allow it to rewind smoothly. Lift the flap so the hooks can engage. Lower the flap. It will sit flat.

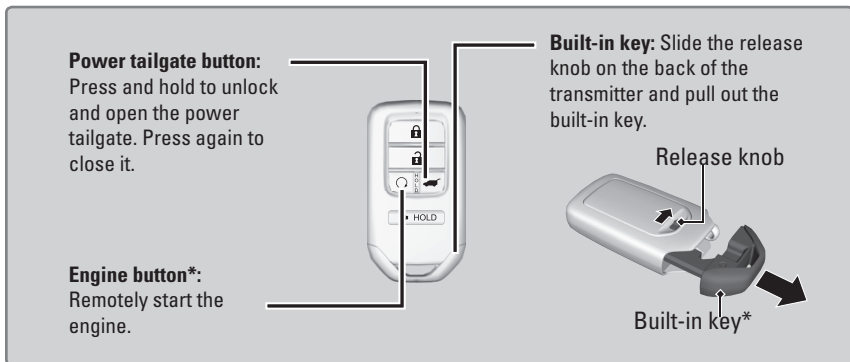
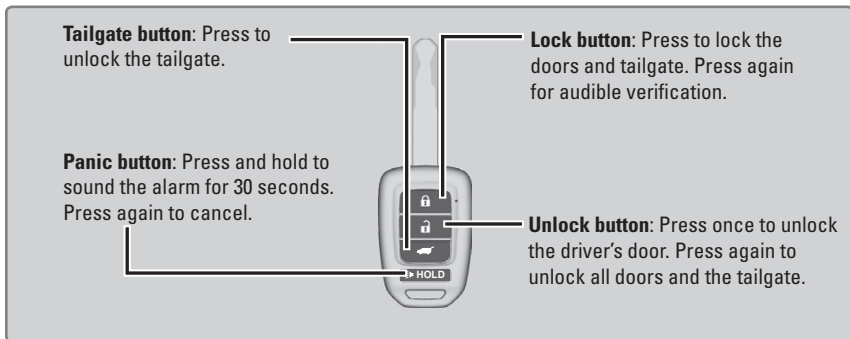


# VEHICLE CONTROLS

Learn about the various controls necessary for operating and driving the vehicle.

## Using the Key or Remote Transmitter

Lock or unlock the doors and tailgate.



### NOTICE

Leaving the key or remote transmitter in the vehicle can result in theft or accidental movement of the vehicle. Always take it with you whenever you leave the vehicle unattended.

*\*if equipped*