

Shifting

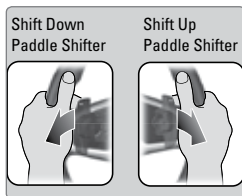
Change the shift position based on your driving needs.

■ Manual Shift Mode (CVT)*

Use the paddle shifters to change sequentially between 1st and 7th speeds. Pull the right-hand paddle to upshift. Pull the left-hand paddle to downshift.

Shift lever in (S): The transmission switches to manual shift mode. The transmission will still automatically shift to prevent over or under revving. The transmission will automatically shift into 1st when you come to a stop. Cancel manual shift mode by returning the shift lever to (D).

Shift lever in (D): Pull the upshift paddle to temporarily engage manual shift mode. Manual shift mode will automatically cancel if the system detects you aren't actively shifting. Or, you can cancel by pulling and holding the upshift paddle.



**if equipped*