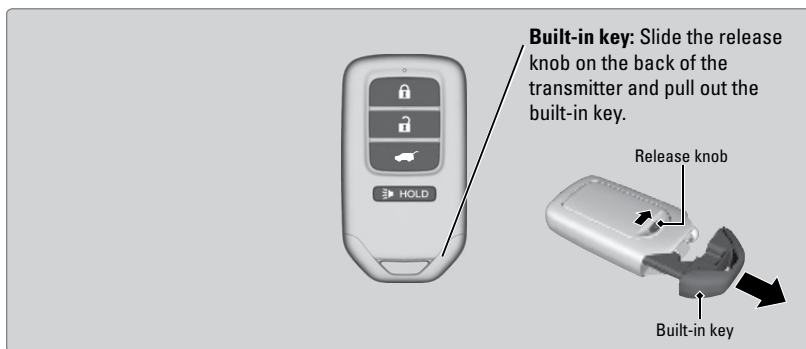
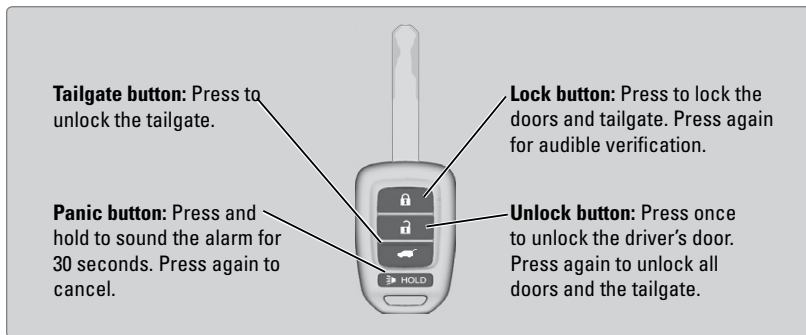


# VEHICLE CONTROLS

Learn about the various controls necessary for operating and driving the vehicle.

## Using the Key or Remote Transmitter

Lock or unlock the doors and tailgate.



### NOTICE

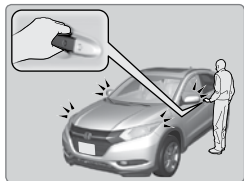
Leaving the key or remote transmitter in the vehicle can result in theft or accidental movement of the vehicle. Always take it with you whenever you leave the vehicle unattended.

## Smart Entry System\*

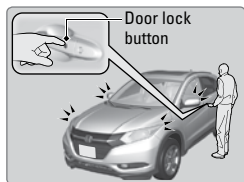
When you carry the remote transmitter (for example, in a pocket or purse) and it is outside the vehicle and within range (about 32 inches or 80 cm), you can lock or unlock the doors and tailgate without handling the transmitter.

### ■ Unlocking/Locking the Doors

**To unlock:** Grab the driver's door handle when the vehicle is off to unlock the driver's door. Grab the front passenger's door handle to unlock all doors and the tailgate.



**To lock:** Press the door lock button on the front door handle when the vehicle is off. If the remote transmitter is inside the vehicle, the doors will not lock.

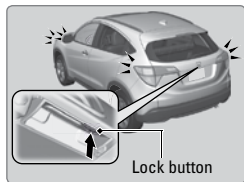


### ■ Unlocking/Locking the Tailgate

**To unlock:** Press the tailgate release button under the tailgate handle to unlock the tailgate. The vehicle can be on or off.




**To lock:** Press the tailgate lock button to lock the tailgate and all doors. If the remote transmitter is inside the vehicle, the tailgate and doors will not lock.



## Customizing Door Lock Settings

Customize the auto door-lock setting to your preference. Begin with the vehicle off.

### Customizing lock settings


Steps	Drive Lock Mode <sup>*1</sup>	Off
1	Apply the parking brake.	
2	The driver's door must be closed at this stage.	Open the driver's door.
3	Turn the ignition switch to ON <sup>*2</sup> . Push the <b>ENGINE START/STOP</b> button twice without depressing the brake pedal <sup>*3</sup> .	
4	Press and hold the front of the master door lock switch on the driver's door. You will hear a click more than five seconds elapsed. Release the switch.	
		
5	Turn the ignition switch to OFF within 20 seconds <sup>*2</sup> . Push the <b>ENGINE START/STOP</b> button once without depressing the brake pedal <sup>*3</sup> . <ul style="list-style-type: none"> <li>* Customization is completed.</li> <li>* All doors unlock and all turn signals blink three times.</li> </ul>	

\*1: Default setting

\*2: Models without smart entry system

\*3: Models with smart entry system

### Customizing unlock settings

Steps	Driver Door Open Unlock Mode <sup>*1</sup>	Continuously variable transmission models Park Unlock Mode	Off
	1	Apply the parking brake. Continuously variable transmission models Move the shift lever out of P with the brake pedal depressed.	Apply the parking brake. Move the shift lever to P.
2	The driver's door must be closed at this stage.		Open the driver's door.
3	Turn the ignition switch to ON <sup>*2</sup> . Push the <b>ENGINE START/STOP</b> button twice without depressing the brake pedal <sup>*3</sup> .		
4	Press and hold the rear of the master door lock switch on the driver's door. You will hear a click more than five seconds elapsed. Release the switch.		
			
5	Turn the ignition switch to OFF within 20 seconds <sup>*2</sup> . Push the <b>ENGINE START/STOP</b> button once without depressing the brake pedal <sup>*3</sup> . <ul style="list-style-type: none"> <li>* Customization is completed.</li> <li>* All doors lock and all turn signals blink three times.</li> </ul>		

\*1: Default setting

\*2: Models without smart entry system

\*3: Models with smart entry system

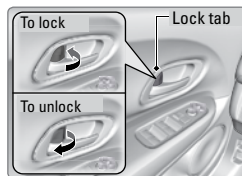
## Door Operation

Use several methods to lock or unlock the doors.

### ■ Using the Lock Tab

**To unlock:** Pull the lock tab rearward. When you unlock the door using the lock tab on the driver's door, only the driver's door unlocks.

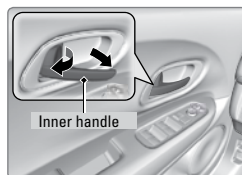
**To lock:** Push the lock tab forward. When you lock the door using the lock tab on the driver's door, all other doors and the tailgate lock.



### ■ Using the Front Door Inner Handle

When you pull either front door inner handle, the door unlocks and opens.

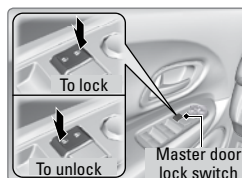
Unlocking and opening the driver's door from the inner handle unlocks all the other doors.



### ■ Using the Master Door Lock Switch

**To unlock:** Press the unlock side of the switch to unlock all doors and the tailgate.

**To lock:** Press the lock side of the switch to lock all doors and the tailgate.



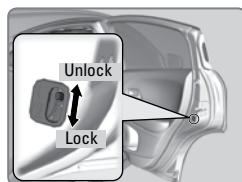
You can use the master door lock switch to customize the door locking and unlocking settings. See the Owner's Manual at [owners.honda.com](http://owners.honda.com) for instructions.

### ■ Childproof Door Locks

The childproof door locks prevent the rear doors from being opened from the inside, regardless of the position of the lock tab.

Slide the lever in the rear door to the lock position, and close the door.

Open the door using the outer door handle.

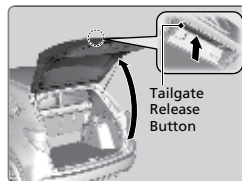


## Tailgate Operation

Use these methods to operate the tailgate.

### ■ Opening the Tailgate

Unlock the tailgate using the remote transmitter. Press the tailgate release button and lift up the tailgate to open it.



### ■ Closing the Tailgate

Grab the inner handle and pull the tailgate down. Push it closed from the outside.

