

AUDIO AND CONNECTIVITY

Learn how to operate the vehicle's audio system.

Basic Audio Operation

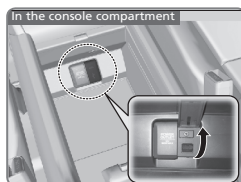
Connect audio devices and operate buttons and displays for the audio system.

■ USB Port

Connect a USB flash drive or other audio device, such as an iPod or iPhone®. Install the flash drive or cable connector to the USB port.

Models with Color Audio

The USB port is located inside the center console and is for playing audio and/or charging devices.

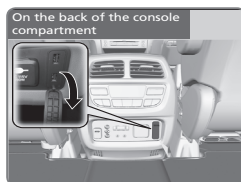
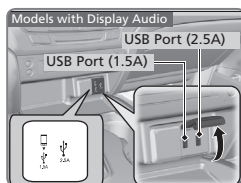


Models with Display Audio

There are two USB ports in the front console. The left port (1.5A) is for Apple CarPlay, Android Auto, or playing audio. The right port (2.5A) is for playing audio and/or charging devices.

The USB port located inside the center console can be used for playing audio and/or charging devices.

There are additional (2.5A) ports* on the back of the center console that can be used for charging only.



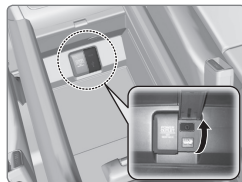
*iPod and iPhone are trademarks of Apple, Inc.
State or local laws may prohibit the operation
of handheld electronic devices while operating a vehicle.*

**if equipped*

Auxiliary Input Jack

Connect standard audio devices with a 1/8-inch (3.5 mm) stereo miniplug.

1. Open the AUX cover.
2. Insert the miniplug attached to the audio device into the jack. The audio system switches to AUX mode. Use the device to control the audio.



Accessory Power Socket

Open the socket cover to use power when the vehicle is on.

Power sockets are located in the front console, inside the center console, and the rear cargo area*.



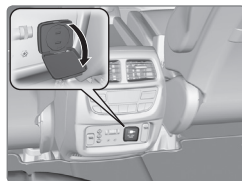
NOTICE

Do not insert an automotive type cigarette lighter element. This can overheat the power socket.

AC Power Outlet*

When the engine is running, the outlet can supply power for appliances up to 115 volts at 150 watts or less.

1. Open the socket cover on the back of the center console.
2. Slightly plug in the socket, turn it 90 degrees clockwise, then push it in all the way.



NOTICE

Do not use the AC power outlet for electric appliances that require high initial peak wattage, such as cathode-ray tube type televisions, refrigerators, electric pumps, etc. It is not suitable for devices that process precise data, such as medical equipment, and that require an extremely stable power supply, such as microcomputer-controlled electric blankets, touch sensor lamps, etc.

**if equipped*

Steering Wheel Controls

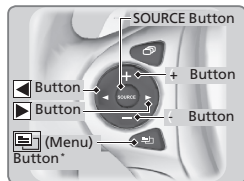
You can operate certain functions of the audio system using the steering wheel controls.

SOURCE button: Cycle through available audio modes.

◀ / ▶ buttons: Change presets, tracks, albums, or folders.

+ / - buttons: Adjust audio volume.

Menu button*: From the audio screen, press to choose options for the current audio mode. Use the + / - buttons and the SOURCE button to scroll and enter selections.



FM/AM/SiriusXM Radio*

Press **◀** or **▶** for the next or previous station.

Press and hold **◀** or **▶** for the next or previous strong station.

CD*/iPod/USB/Bluetooth® Audio

Press **◀** or **▶** for the next or previous track.

Press and hold **◀** or **▶** for the next or previous folder (CD*/USB).

Pandora (U.S. only)

Press **▶** for the next song.

Press and hold **◀** or **▶** for the next or previous station.

**if equipped*

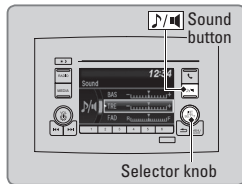
■ Adjusting the Sound

Adjust various sound settings.

Models with Color Audio

Use the selector knob to make and enter selections.

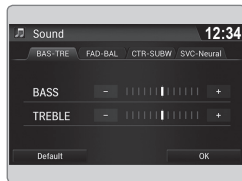
1. Press the Sound button.
2. Select a sound mode to change and adjust it using the selector knob.
3. Press the Back button to exit the menu.



Models with Display Audio

Make selections using the touchscreen.

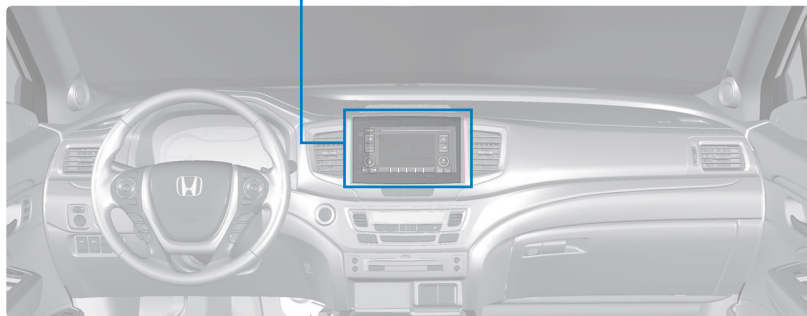
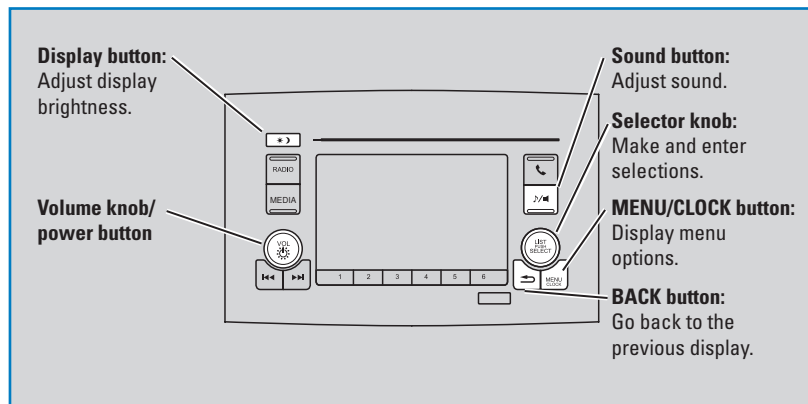
1. From the HOME screen, select Settings.
2. Select Audio.
3. Select Sound.
4. Select the tabs to change the sound mode and adjust the setting.
5. Select OK when complete.



Models with Color Audio

Color Audio

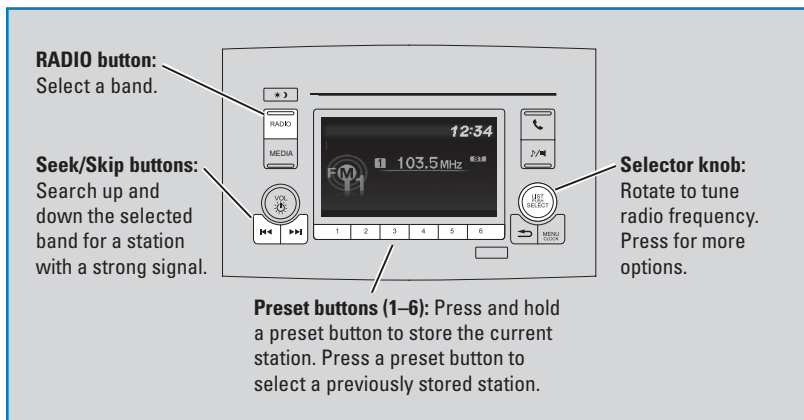
Use the buttons to control the display and audio system.



Models with Color Audio

FM/AM Radio

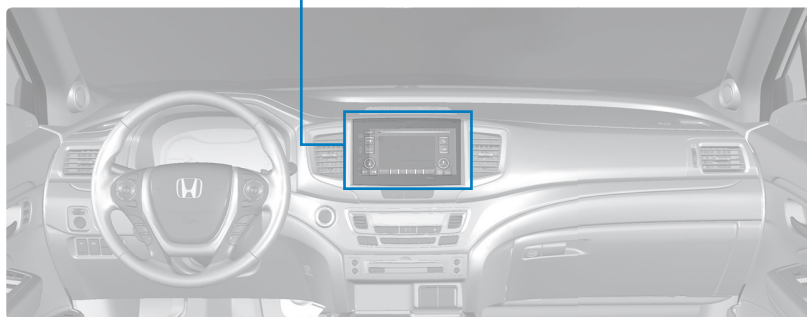
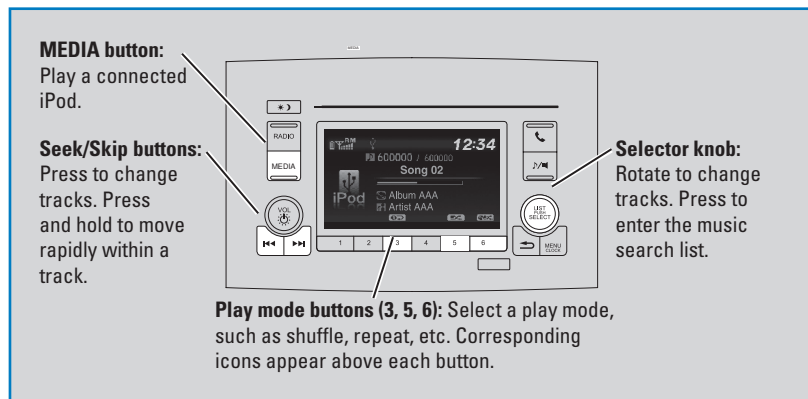
Play FM or AM radio stations.



Models with Color Audio

iPod®

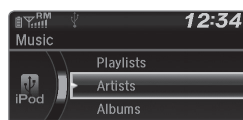
Play and operate an iPod through the vehicle's audio system. Connect your device.



■ Searching for Music

Use the selector knob to search for tracks stored on the iPod.

1. From the audio screen, press the selector knob.
2. Select a search option.
3. Select the track you want to play.

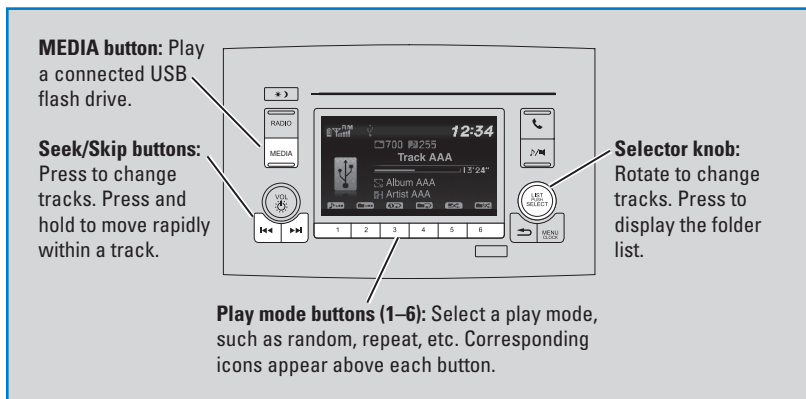


iPod is a trademark of Apple, Inc.

Models with Color Audio

USB Flash Drive

Play and operate a USB flash drive through the vehicle's audio system. Connect your device.



■ Searching for Music

Use the selector knob to search for tracks stored on the flash drive.

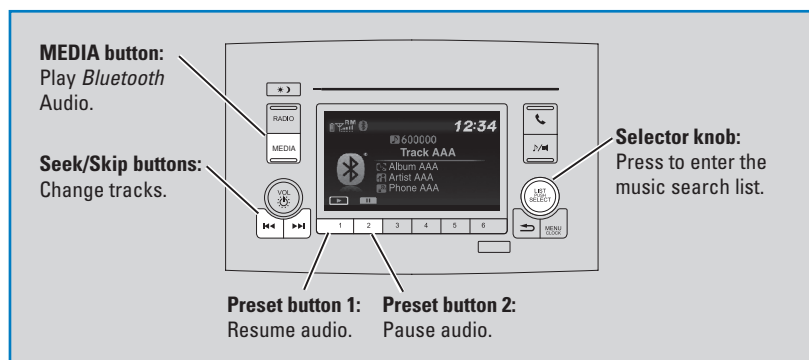
1. From the audio screen, press the selector knob.
2. Select a folder.
3. Select the track you want to play.



Models with Color Audio

Bluetooth® Audio

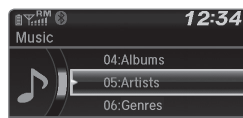
Play streaming or stored audio from your compatible phone through the vehicle's audio system. Visit handsfreelink.com (U.S.) or handsfreelink.ca (Canada) to check phone compatibility. Standard data rates apply with your phone service provider. Connect your phone to *Bluetooth HandsFreeLink*.



■ Searching for Music

Use the selector knob to search for tracks stored on the device.

1. From the audio screen, press the selector knob.
2. Select a category.
3. Select the track you want to play.



Notes:

- Make sure the volume on your phone is properly adjusted.
- You may need to enable additional settings on your phone for playback.
- The resume/pause function and remote audio controls are not supported on all phones.

Applicable laws may prohibit the operation of handheld electronic devices while operating a vehicle. Launch streaming audio on your phone only when it is safe to do so.