

## Near Field Communication (NFC)\*1 - Models with Display Audio

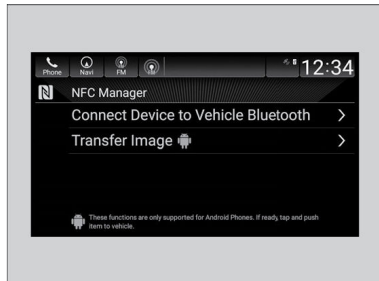
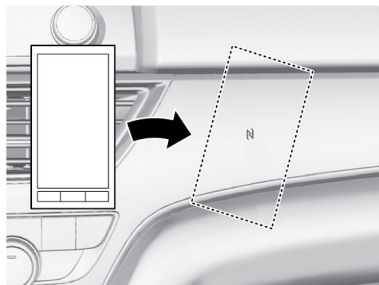
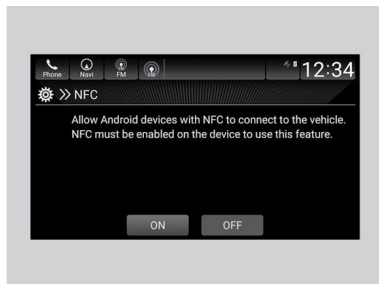
Near Field Communication (NFC) allows you to connect select Android phones to the audio system via *Bluetooth*®.

1. Press the Home button.
2. Select Settings.
3. Select Connections.
4. Select NFC, then ON.
5. Select Android Beam, then ON.

**Note:** Depending on your phone and cellular signal capability, your vehicle's location may not be sent to the operator.

### ■ *Bluetooth*® Setup

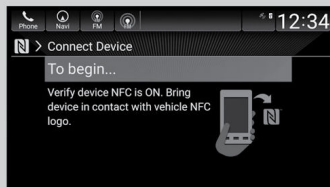
1. From the Home screen, select NFC Manager. Or touch the NFC logo near the glove box with the NFC tag of your phone. The NFC Manager screen is displayed.
2. Select Connect Device to Vehicle *Bluetooth*®.
3. Touch the NFC logo near the glove box with the NFC tag of your phone.



\*1 - If equipped

4. A notification appears on the screen if pairing is successful. Confirm if the pairing code on the screen and your phone match.

This may vary by phone.



### ■ Wallpaper Image Transfer

1. From the Home screen, select NFC Manager or touch the NFC logo near the glove box with the NFC tag of your phone.
2. Select Transfer Image.
3. Open the photo you want to transfer on your phone, then select Next.
4. Touch the NFC logo near the glove box with the NFC tag of your phone.
5. Select the photo on your phone.
6. A confirmation message appears on the screen. Select Wallpaper.

