

## ■ Customizing Door Lock and Unlock Settings

Customize the auto door lock and door unlock settings to your preference. Begin with the vehicle off.

### Models with Color Audio

1. Press the **Display/Information** button, then select **Vehicle Settings**. Press the **ENTER** button.
2. Select **Door Setup**.
3. Select **Auto Door Lock** or **Auto Door Unlock** to customize.

### Models with Display Audio

1. From the HOME screen, select **Settings**.
2. Select **Vehicle**.
3. Select **Door/Window Setup**.
4. Select **Auto Door Lock** or **Auto Door Unlock** to customize.

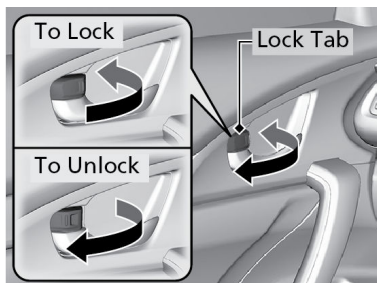
## Door Operation

Use several methods to lock or unlock the doors.

### ■ Using the Lock Tab

**To unlock:** When you unlock either front door using the lock tab, the specific door (driver's or passenger's) unlocks.

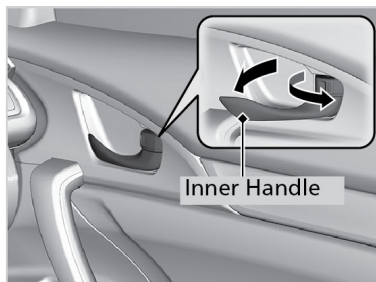
**To lock:** When you lock the door using the lock tab on the driver's door, all the other doors and the trunk lock at the same time. When you lock the door using the lock tab on the front passenger's door, only that door locks.



### ■ Using the Front Door Inner Handle

Pull the front door inner handle. The door unlocks and opens in one motion. Unlocking and opening the driver's door from the inner handle unlocks all other doors and trunk.

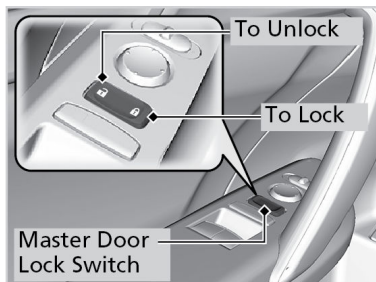
Do not pull a front door inner handle while the vehicle is moving.



### ■ Using the Master Door Lock Switch

**To unlock:** Press the unlock side of the switch to unlock all doors and the trunk.

**To lock:** Press the lock side of the switch to lock all doors and the trunk.



### ■ Using the Trunk Opener

Press and hold the trunk opener button on the driver's door to unlock and open the trunk.

