

BLUETOOTH® HANDSFREELINK®

Learn how to operate the vehicle's hands-free calling system.

Basic HFL Operation

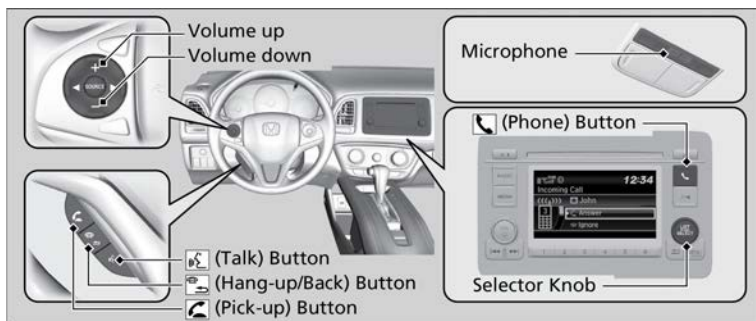
Make and receive phone calls using the vehicle's audio system, without handling your phone. Visit *handsfreelink.com (US)* or phone (888) 528-7876 (Canada) to check phone compatibility.

To reduce the potential for driver distraction, certain manual functions may be inoperable or grayed out while the vehicle is moving. Voice commands are always available.

■ HFL Displays and Controls

Use the controls to enter information and make selections.

Models with Color Audio



Pick-up button: Press to go directly to the Phone screen or to answer an incoming call.

Hang-up/Back button: Press to end a call or to cancel a command.

Talk button: Press to call a number with a stored voice tag.

Phone button: Press to go directly to the Phone screen.

Selector knob: Rotate the selector knob to select an item on the screen, then press the selector knob.

■ Talk Button Tips

When using the Talk button, wait for the beep before saying a command. The system recognizes commands listed in the Voice Command Index.

- When using the Talk button, wait until you hear a beep before speaking.
- To bypass the system prompts, simply press the Talk button again to say your command.
- Speak in a clear, natural voice.
- Reduce all background noise.
- Adjust the dashboard vents away from the microphone on the ceiling.
- Close the windows and moonroof^{*1}.

Pairing a Phone

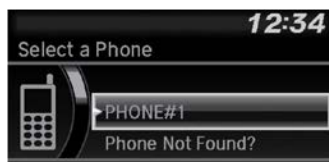
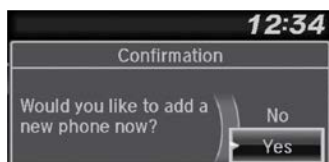
To use hands-free phone and streaming audio functions, you must first pair your phone to the system. This can only be done when the vehicle is stopped. If there is an active connection to Apple CarPlay (see Models with Display Audio - Apple CarPlay™) or Android Auto (see Android Auto™), pairing of additional Bluetooth-compatible devices is unavailable and Add Bluetooth Device is grayed out from the Bluetooth Device List screen.

■ Pairing the First Phone

Models with Color Audio

Use the selector knob to make and enter selections.

1. Press the call button.
2. Rotate the selector knob to select Yes, then press the selector knob.
3. Make sure your phone is in search or discoverable mode, then press the selector knob.
4. When your phone appears on the list, select it by pressing the selector knob.
If your phone does not appear, select Phone Not Found? and search for Bluetooth® devices using your phone. From your phone, select HandsFreeLink®.
5. The system gives you a pairing code on the audio/information screen.
Confirm if the pairing code on the screen and your phone match. This may vary by phone
6. A notification appears on the screen if pairing is successful.



Making a Call

You can make calls by inputting any phone number, or by using the imported phonebook, call history, speed dial entries, or redial.

■ Dialing a Number

Models with Color Audio

1. Press the Phone button.
2. Rotate the selector knob to select Dial, then press the selector knob.
3. Rotate the selector knob to select a number, then press the selector knob.



Applicable laws may prohibit the operation of handheld electronic devices while operating a vehicle.

4. Rotate the selector knob to select the hang up button, then press the selector knob.

Dialing starts automatically.

■ Using the Phonebook

When your phone is paired, its phonebook is automatically imported to the system.

This method is inoperable while the vehicle is moving.

Models with Color Audio

1. Press the Phone button.
2. Rotate the selector knob to select Phonebook, then press the selector knob.
3. The phonebook is stored alphabetically.

Rotate the selector knob to select the initial, then press the selector knob.

4. Rotate the selector knob to select a name, then press the selector knob.
5. Rotate the selector knob to select a number, then press the selector knob.

Dialing starts automatically.

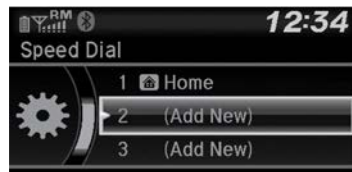


■ Storing Speed Dial Entries

Store up to 20 numbers for quick dialing. To store a speed dial number:

Models with Color Audio

1. Press the phone button.
2. Rotate the selector knob to select Speed Dial, then press it.
3. Rotate the selector knob to select Add New, then press it.
4. Rotate the selector knob to select a place to choose a number from, then press it.



From Call History:

Select a number from the call history.

From Phonebook:

Select a number from the connected cell phone's imported phonebook.

From Phone Number:

Input the number manually.



5. When the speed dial is successfully stored, you are asked to create a voice tag for the number. Rotate the selector knob to select Yes or No, then press it.
6. Using the talk button, follow the prompts to say the name for the speed dial entry.



■ Using Speed Dial

Models with Color Audio

Make calls quickly using stored speed dial entries or call history numbers.

1. Press the Phone button.
2. Rotate the selector knob to select Speed Dial, then press the selector knob.
3. Rotate the selector knob to select a number, then press the selector knob.

Dialing starts automatically.



VOICE COMMAND INDEX

Learn about the available voice commands to help you operate the vehicle. The system recognizes only those commands shown here. Press the TALK button before you say a command.

Voice Portal Commands

When you press the TALK button, the Voice Portal screen appears. Say one of the options, and follow the system prompts.

- Phone
- Audio
- Navigation^{*2}

Phone Commands

The system accepts these commands on most screens.

Audio Commands^{*1}

The system accepts these commands on the dedicated screen for the voice recognition of the audio.

Navigation Commands^{*2}

When you press the Talk button and say “*Navigation*,” you can say one of the options below. Follow the system prompts.

- Show/View map
- Go home
- Find address
- Stop route
- Detour
- Find city
- Recent Places
- Find intersection

*^{*2} - Models with navigation only*

*^{*1} - If equipped*