

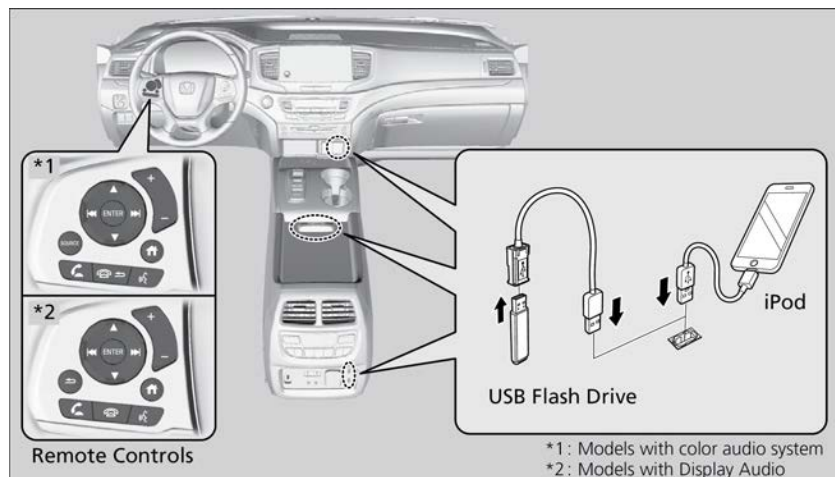
AUDIO AND CONNECTIVITY

Learn how to operate the vehicle's audio system.

Basic Audio Operation

Connect audio devices and operate buttons and displays for the audio system.

You can operate the audio system from the buttons*¹ and knobs on the panel, the remote controls on the steering wheel, or the icons on the touchscreen interface *¹.



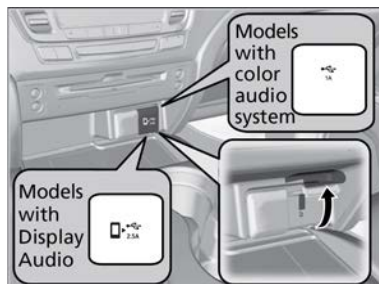
■ USB Port

Install the iPod® USB connector or the USB flash drive to the USB port.

On the console panel

The USB port (1.0A) is for playing audio files on a USB flash drive, connecting a cellular phone and charging devices.

The USB port (2.5A) on the right side is for charging devices, playing audio files and connecting compatible phones with Apple Carplay™ or Android Auto™.

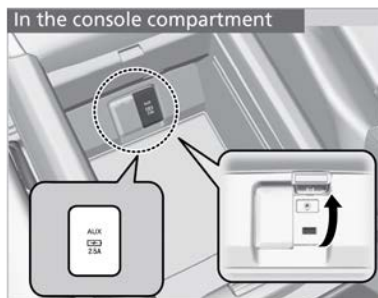


In the console compartment

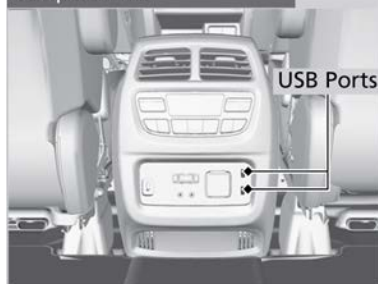
The USB port (2.5A) is only for charging devices.

On the back of the console compartment*1

The USB ports (2.5A) are only for charging devices.



On the back of the console compartment



■ Accessory Power Socket

Open the socket cover to use power when the vehicle is on.

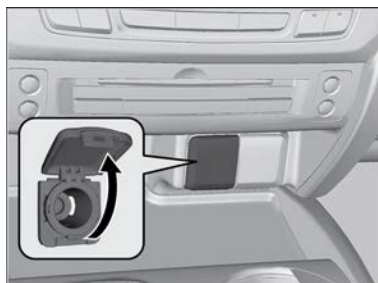
The accessory power socket can be used when the power mode is in ACCESSORY or ON.

Console panel

Open the lid and the cover to use it.

Console compartment

Pull the handle and open the cover to use it.



*1 - If equipped

Cargo area^{*1}

Open the cover to use it.

NOTICE

Do not insert an automotive type cigarette lighter element. This can overheat the power socket.



■ Audio Remote Controls

You can operate certain functions of the audio system using the steering wheel controls.

Models with Display Audio

**1 - If equipped*

+ / - (Volume) Bar

Press + : To increase the volume.

Press - : To decrease the volume.

When selecting the audio mode

Press Up arrow or Down arrow to select **Now Playing** on the home screen of the driver information interface, and then press the **ENTER** button.

Press Up arrow or Down Arrow

Cycles through the audio modes.

When listening to the radio

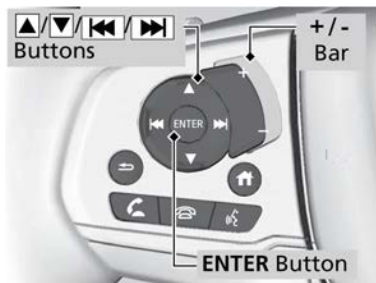
Press >>: To select the next preset radio station.

Press <<: To select the previous preset radio station.

When listening to a CD*¹, iPod, USB flash drive, My Honda Music, or *Bluetooth®* Audio

Press >> : To skip to the next song.

Press << : To go back to the beginning of the current or previous song.



**1 - If equipped*

1. Select Home.
2. Select an audio source icon.
3. Select Sound.

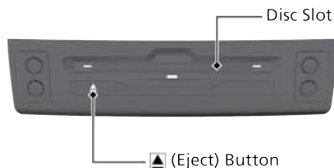


Display Audio System

Use simple gestures—including touching, swiping and scrolling—to operate certain audio functions.



Models with Blu-ray™ player



AUDIO AND CONNECTIVITY

Note: Some items may be grayed out during driving to reduce the potential for distraction. You can select them when the vehicle is stopped or use voice commands.

Wearing gloves may limit or prevent touchscreen response.

**1 - If equipped*