

Rear Entertainment System (RES)*1

Rear passengers can enjoy a different audio or entertainment source than front passengers, including movies, games, and other audio choices.

**1 - If equipped*



■ Operating the System from the Front

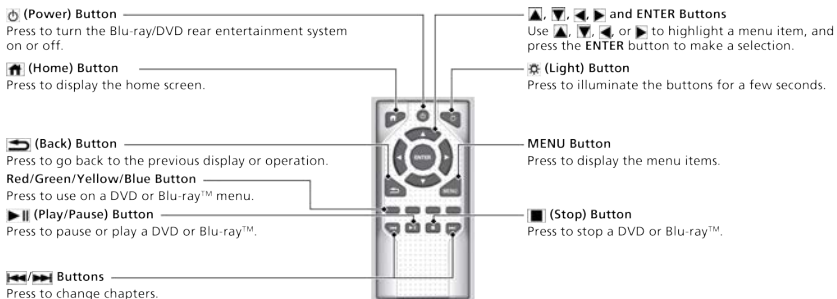
To operate the system, set the power mode to ON or ACCESSORY. Select Rear Entertainment, then the Rear Icon in the audio/information screen to turn on the system. You can also turn on the system by pressing the Power button on the remote.



■ Operating the System from the Rear

1. Make sure the REAR POWER button is turned on in the front.
2. Press the HOME button.
3. Select the desired source button (DVD, iPod®, USB flash drive, HDMI etc.).

AUDIO AND CONNECTIVITY



⚠ CAUTION

Radio Frequency Radiation Exposure. The Rear Entertainment System remote complies with FCC radiation exposure limits set forth for an uncontrolled environment and meets the FCC Radio Frequency (RF) Exposure Guidelines. The Rear Entertainment System remote should be kept at least 7.9 inches (20 cm) or more away from a person's body when operated.

■ Playing a Disc

Insert a DVD or Blu-ray™ into the disc slot to begin automatic playback. Use the front or rear controls to operate disc playback.

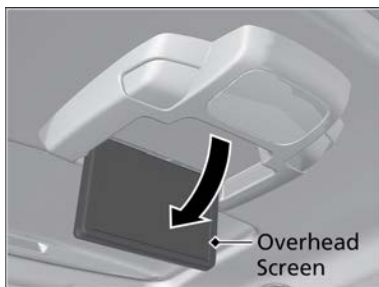
The system also supports audio CDs, CD-Rs, and CD-RWs in MP3, WMA, or ACC formats. Insert a CD to begin automatic playback.

NOTICE

Do not use discs with adhesive labels or insert a damaged disc. Inserting these types of discs may cause them to get stuck or damage the audio unit.

■ Overhead Screen

Pull down the screen to the first or second detent until it latches.



NOTICE

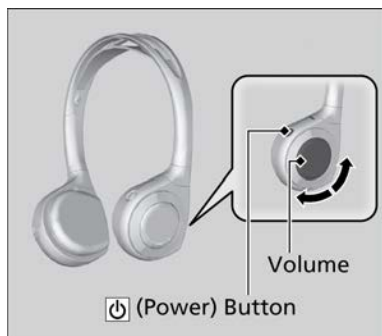
This vehicle's overhead mounted display includes mercury-containing components. Upon removal or replacement, please reuse, recycle, or dispose of as hazardous waste.

■ Wireless Headphones

Your vehicle comes with two sets of wireless headphones.

Press the Power button on the right earpiece to turn on the headphones.

Turn the dial on the right earpiece to adjust the volume.



■ Auxiliary Console Panel

Multiple connection inputs are located on the back of the center console.



HDMI™ Port

The system accepts HDMI input from video game systems and other devices. Open the outlet cover and insert the cable.

AUDIO AND CONNECTIVITY

Headphone Jacks

There are two headphone connectors for the rear entertainment system. Each connector has its own volume control.

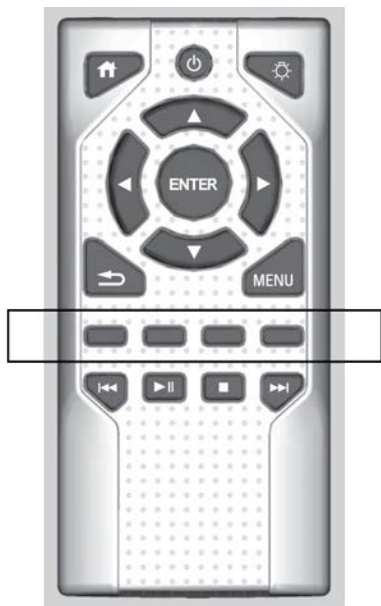
AC Power Outlet

The outlet can supply power for appliances up to 115 volts that are rated 150 watts or less.

USB Ports

There are two USB ports that can be used to charge a device.

To Change Function Status



Press any of the following colored buttons on the RES remote three times to turn a function on or off, or to change a function setting.

- | | |
|-----------------------|------------------------|
| Red button: | Accessibility |
| Green button: | Subtitles |
| Yellow button: | Secondary Audio |
| Blue button: | Audio Format Switching |