

BLUETOOTH® HANDSFREELINK®

How to operate the vehicle's hands-free calling system.

Basic HFL Operation

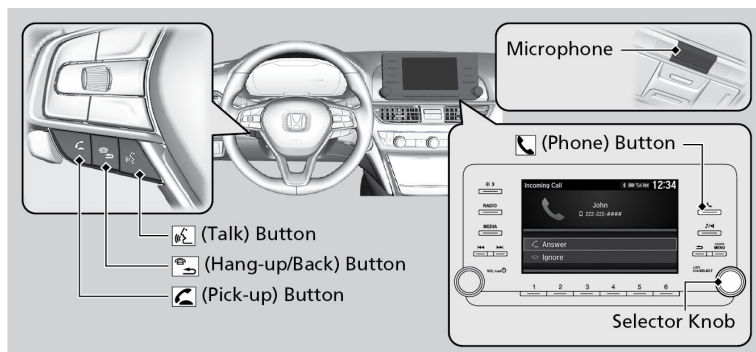
Make and receive phone calls using the vehicle's audio system, without handling your phone. Visit handsfreelink.com to check phone compatibility. Canada customers can phone (855) 490-7351 for any HandsFreeLink® related inquiry.

To reduce the potential for driver distraction, certain manual functions may be inoperable or grayed out while the vehicle is moving. Voice commands are always available.

■ HFL Displays and Controls

Use the controls to enter information and make selections.

Models with Color Audio



(Pick-Up) button: Press to go directly to the Phone screen or to answer an incoming call.

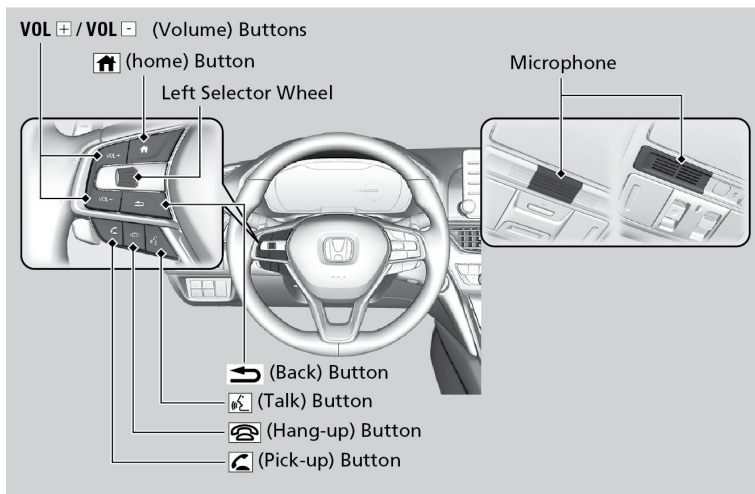
(Hang-up/Back) button: Press to end a call or to cancel a command.

(Talk) button: Press to call a number with a stored voice tag.

(Phone) button: Press to go directly to the Phone screen.

Selector knob: Rotate the selector knob to select an item on the screen, then press to select.

Models with Display Audio



(Pick-Up) button: Press to go directly to the phone menu on the driver information interface, or to answer an incoming call.

(Hang-up) button: Press to end a call.

(Back) button: Press to go back to the previous screen, or cancel a command.

(Talk) button: Press to access Voice Portal.

Left Selector Wheel: Press home button, then roll up or down to select Phone on the driver information interface, and then press the left selector wheel.

Home button: Press to go back to the home screen of the driver information interface.

■ Talk Button Tips

When using the Talk button, wait for the beep before saying a command. The system recognizes commands listed in the Voice Command Index.

- To bypass the system prompts, simply press the Talk button again to say your command.
- Speak in a clear, natural voice.
- Reduce all background noise.
- Adjust the dashboard vents away from the microphone on the ceiling.
- Close the windows and moonroof*1.

**1 - If equipped*