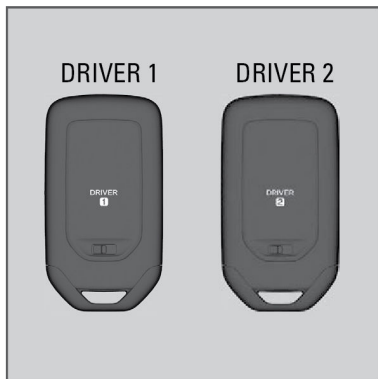


Driving Position Memory System*1

You can store two driver's seat positions with the driving position memory system (except for power lumbar).

When the driver's door is unlocked, and you open the driver's door with a remote transmitter, or smart entry system, the seat adjusts to retracted positions of one of the two preset positions automatically.

The seat will move to the stored position when you set the power mode to ACCESSORY.



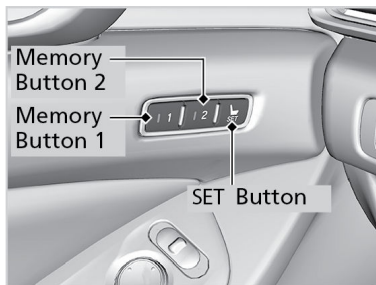
■ Storing a Position in Memory

1. Set the power mode to ON. Adjust the driver's seat to the desired position.

2. Press the **SET** button.

You will hear a beep, and the memory button indicator light will blink.

3. Press and hold memory button 1 or 2 within 5 seconds of pressing the **SET** button.

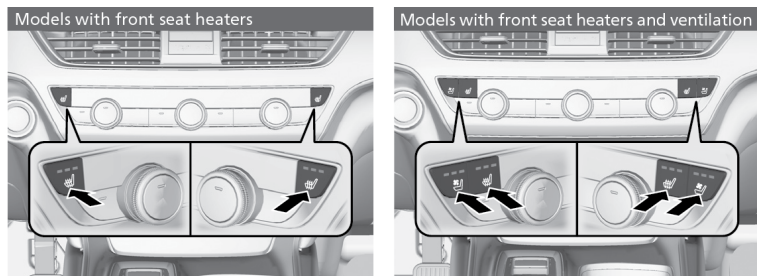


Once the seat position has been memorized, you will hear the beeper twice, and the indicator light on the button you pressed stays on.

**1 - If equipped*

Front Seat Heaters*¹ and Ventilation*¹

The power mode must be in ON to use the seat heaters or ventilation.



Press the seat heater or the seat ventilation button:

- Once - The HI setting (three indicators on)
- Twice - The MID setting (two indicators on)
- Three times - The LO setting (one indicator on)
- Four times - The OFF setting (no indicators on)

Do not use the seat heaters*¹ and the seat ventilation*¹ even in LO when the power system is off. Under such conditions, the 12-volt battery may be weakened, making the power system difficult to start.

After a certain period of time, the strength setting for the seat heaters will automatically be reduced by one level at a time until the seat heater shuts off. The elapsed time varies according to the interior environment.

⚠ WARNING

Heat-induced burns are possible when using seat heaters.

Persons with a diminished ability to sense temperature (e.g., persons with diabetes, lower-limb nerve damage, or paralysis) or with sensitive skin should not use seat heaters.

**4 - Canadian models only, if equipped*

**1 - If equipped*

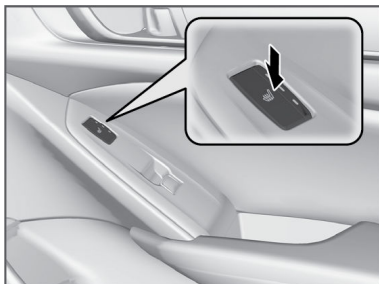
Rear Seat Heaters^{*1}

The power mode must be in ON to use the seat heaters.

There is no heater in the rear center seating position.

Press the seat heater button:

- Once - The HI setting (three indicators on)
- Twice - The MID setting (two indicators on)
- Three times - The LO setting (one indicator on)
- Four times - The OFF setting (no indicators on)



Do not use the seat heaters even in LO

when the power system is off. Under such conditions, the 12-volt battery may be weakened, making the power system difficult to start.

After a certain period of time, the strength setting for the rear seat heaters will automatically be reduced by one level at a time until the rear seat heaters shuts off. The elapsed time varies according to the interior environment.

⚠ WARNING

Heat-induced burns are possible when using seat heaters.

Persons with a diminished ability to sense temperature (e.g., persons with diabetes, lower-limb nerve damage, or paralysis) or with sensitive skin should not use seat heaters.

*^{*1} - If equipped*