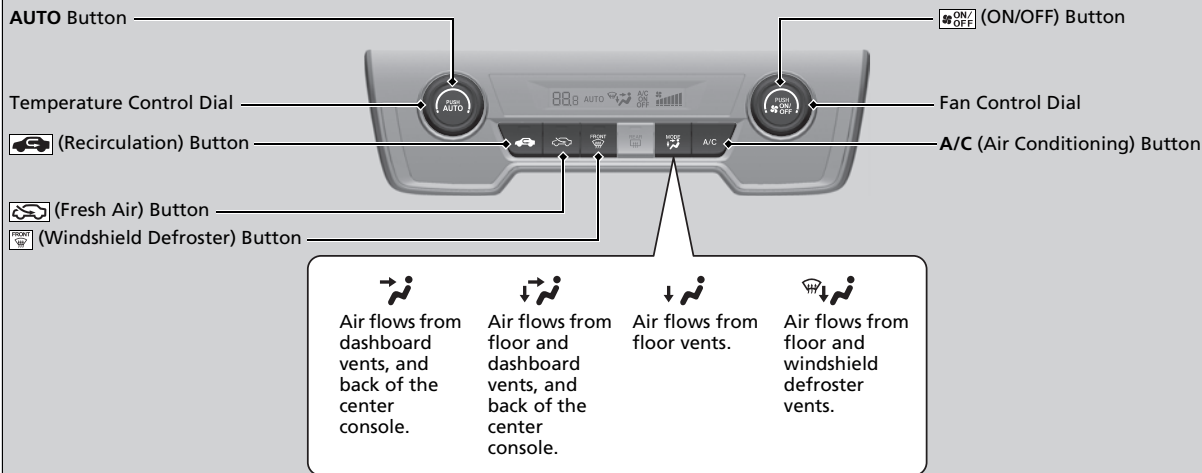


Using Automatic Climate Control

The automatic climate control system maintains the interior temperature you select. The system also selects the proper mix of heated or cooled air that raises or lowers the interior temperature to your preference as quickly as possible.

Models without SYNC button



Models with SYNC button



Air flows from dashboard vents, and back of the center console.

Air flows from floor and dashboard vents, and back of the center console.

Air flows from floor vents.

Air flows from floor and windshield defroster vents.

Fan Control Buttons

CLIMATE Button

Driver's Side Temperature Control Dial

Passenger's Side Temperature Control Dial

AUTO Button

SYNC (Synchronization) Button

ON/OFF (ON/OFF) Button

FRONT (Windshield Defroster) Button

(Recirculation) Button

(Fresh Air) Button

Use the system when the power system is on.

1. Press the **AUTO** button.

Models without SYNC button

2. Adjust the interior temperature using the temperature control dial.

Models with SYNC button

2. Adjust the interior temperature using the driver's side or passenger's side control dial.

All models

3. Press the  (ON/OFF) button to cancel.

►► Using Automatic Climate Control

Models with SYNC button

Press the **CLIMATE** button to display **A/C**, **MODE**, and fan control information on the audio/information screen to operate manually. Select icon to turn **On** or **Off A/C**, change the vent mode, or change the fan speed. If any buttons are pressed while using the climate control system in auto, the function of the button that was pressed will take priority.


All models

The AUTO indicator will go off, but functions unrelated to the button that were pressed will be controlled automatically.

To prevent cold air from blowing in from outside, the fan may not start immediately when the **AUTO** button is pressed.



If the interior is very warm, you can cool it down more rapidly by partially opening the windows, turning the system on auto, and setting the temperature to low. Change the fresh mode to recirculation mode until the temperature cools down.


When you set the temperature to the lower or upper limit, **Lo** or **Hi** is displayed.


Pressing the  button switches the climate control system between on and off. When turned on, the system returns to your last selection.

While ECON mode is active, the climate control system may have reduced cooling performance.

■ Switching between the recirculation and fresh air modes

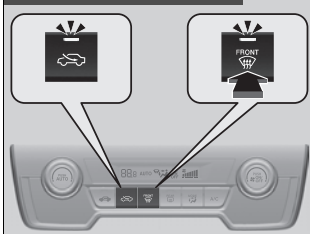
Press the  (recirculation) or  (fresh air) button to switch the mode depending on environmental conditions.


 Recirculation mode (indicator on): Recirculates air from the vehicle's interior through the system.


 Fresh air mode (indicator on): Maintains outside ventilation. Keep the system in fresh air mode in normal situations.

■ Defrosting the Windshield and Windows

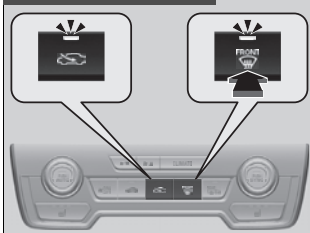
Models without SYNC button



Pressing the  (windshield defroster) button turns the air conditioning system on and automatically switches the system to fresh air mode.

Press the  button again to turn off, the system returns to the previous settings.

Models with SYNC button



► Defrosting the Windshield and Windows

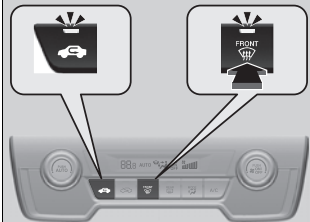
For your safety, make sure you have a clear view through all the windows before driving.

Do not set the temperature near the upper or lower limit.

When cold air hits the windshield, the outside of the windshield may fog up.

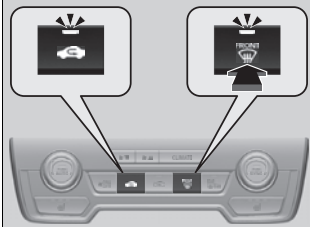
■ To rapidly defrost the windows

Models without SYNC button



1. Press the  button.
2. Press the  button.

Models with SYNC button



►► To rapidly defrost the windows

After defrosting the windows, switch over to fresh air mode. If you keep the system in recirculation mode, the windows may fog up from humidity. This impedes visibility.