

# BLUETOOTH® HANDSFREELINK®

How to operate the vehicle's hands-free calling system.

## Basic HFL Operation

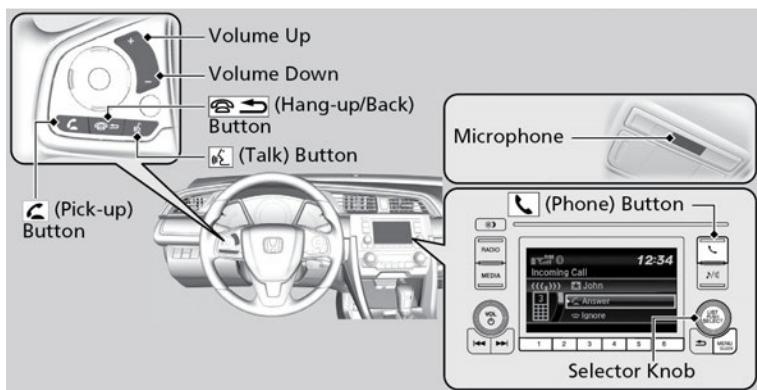
Make and receive phone calls using the vehicle's audio system, without handling your phone. Visit [handsfreelink.com](http://handsfreelink.com) to check phone compatibility. Canada customers can phone (855) 490-7351 for any HandsFreeLink® related inquiry.

**To reduce the potential for driver distraction, certain manual functions may be inoperable or grayed out while the vehicle is moving. Voice commands are always available.**

### ■ HFL Displays and Controls

Use the controls to enter information and make selections.

#### Models with Color Audio



**Pick-up button:** Press to go directly to the Phone screen or to answer an incoming call.

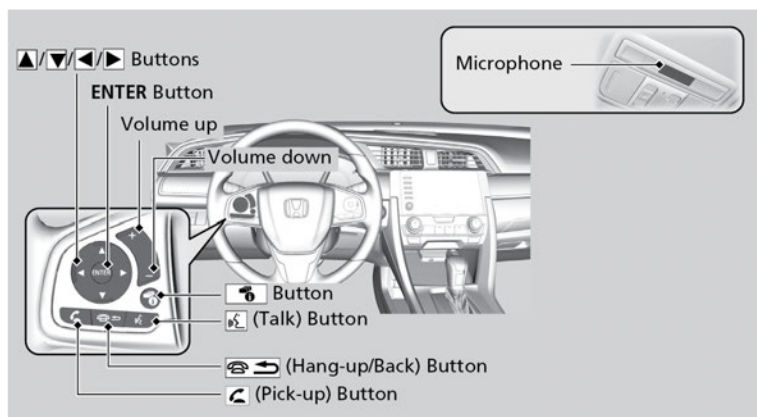
**Hang-up/Back button:** Press to end a call or to cancel a command.

**Talk button:** Press to call a number with a stored voice tag.

**Phone button:** Press to go directly to the Phone screen.

**Selector knob:** Rotate the selector knob to select an item on the screen, then press the selector knob.

#### Models with Display Audio



- Pick-up button:** Press to go directly to the phone menu on the driver information interface, or to answer an incoming call.
- Hang-up/back button:** Press to end a call, go back to the previous command, or cancel a command.
- Talk button:** Press to access Voice Portal.
- Up/Down buttons:** Press to select an item displayed on the phone menu in the Driver Information Interface.
- ENTER button:** Press to call a number listed in the selected item on the phone menu in the Driver Information Interface.
- Display/Information button:** Select the Phone button and press ENTER to display Speed Dial, Call History, or Phonebook on the phone menu in the Driver Information Interface.

## ■ Talk Button Tips

When using the Talk button, wait for the beep before saying a command. The system recognizes commands listed in the Voice Command Index.

- When using the Talk button, wait until you hear a beep before speaking.
- To bypass the system prompts, simply press the Talk button again to say your command.
- Speak in a clear, natural voice.
- Reduce all background noise.
- Adjust the dashboard vents away from the microphone on the ceiling.
- Close the windows and moonroof\*1.

\*1 - If equipped

## Pairing a Phone

To use hands-free phone and streaming audio functions, you must first pair your phone to the system. This can only be done when the vehicle is stopped. If there is an active connection to Apple CarPlay® (see Apple CarPlay) or Android Auto™ (see Android Auto), pairing of additional Bluetooth-compatible devices is unavailable and Add Bluetooth Device is grayed out from the Bluetooth Device List screen.

### ■ Pairing the First Phone

#### Models with Color Audio

Use the selector knob to make and enter selections.

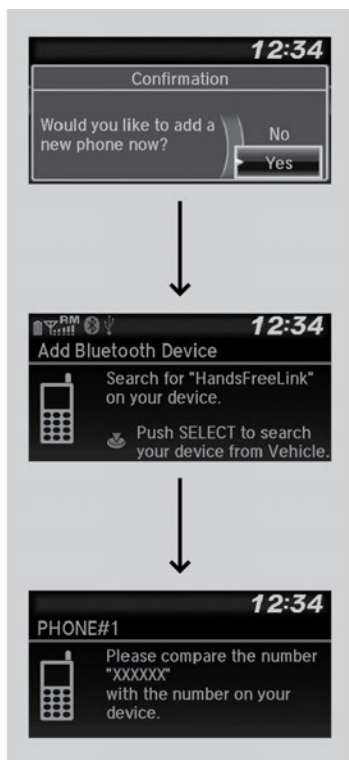
1. Press the Phone button.
2. Make sure your phone is in search or discoverable mode.
3. Select Yes.

The audio system will enter a waiting mode for pairing.

4. Select HandsFreeLink® from your phone.

To search for the phone using the audio system, press the selector knob and follow the prompts.

5. When your phone appears on the list, select it.
6. The system gives you a pairing code on the audio/information screen.  
Confirm if the pairing code on the screen and your phone match.  
This may vary by phone.
7. A notification appears on the screen if pairing is successful.



#### Models with Display Audio

Use the touchscreen to make and enter selections.

1. Select Phone.
2. Select Yes.
3. Make sure your phone is in search or discoverable mode, then select Continue.

HFL automatically searches for a *Bluetooth*® device.

4. Select HandsFreeLink® from your phone. If you want to pair a phone from this audio system, select HandsFreeLink® Not Found, Continue, and then select your phone when it appears on the list. If your phone does not appear, you can select Refresh to search again.

If your phone does not appear, you can select Refresh to search again.

If your phone still does not appear, select Phone Not Found and search for *Bluetooth*® devices using your phone. From your phone, search for HandsFreeLink®.

5. The system gives you a pairing code on the audio/information screen. Confirm if the pairing code on the screen and your phone match. This may vary by phone.
6. A notification appears on the screen if pairing is successful.



## ■ Pairing an Additional Phone

*Applicable laws may prohibit the operation of handheld electronic devices while operating a vehicle.*

**Models with Color Audio**

1. Press the Phone button.  
If a prompt appears asking to connect to a phone, select **No** and proceed with step 2.
2. Rotate to select **Phone Setup**, then press.
3. Rotate to select **Bluetooth® Setup**, then press.
4. Rotate to select **Add New Device**, then press.  
The screen changes to a device list.
5. Make sure your phone is in search or discoverable mode, then press.  
HFL automatically searches for a **Bluetooth®** device.
6. When your phone appears on the list, select it by pressing.  
If your phone does not appear, select **Phone Not Found?** and search for **Bluetooth®** devices using your phone. From your phone, select **HandsFreeLink**.
7. The system gives you a pairing code on the audio/information screen.  
Confirm if the pairing code on the screen and your phone match. This may vary by phone.



## Making a Call

You can make calls by inputting any phone number, or by using the imported phonebook, call history, speed dial entries, or redial.

### ■ Dialing a Number

#### Models with Color Audio

1. Press the Phone button.
2. Select Dial.
3. Select a number.
4. Select the phone button.



#### Models with Display Audio

1. Go to the Phone menu screen.
2. Select Dial.
3. Select a number.

Use the keyboard on the touch screen for entering numbers.

4. Select the Phone button.



### ■ Using the Phonebook

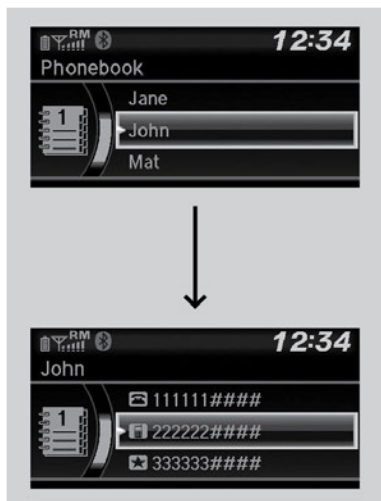
When your phone is paired, its phonebook is automatically imported to the system.

This method is inoperable while the vehicle is moving.

*Applicable laws may prohibit the operation of handheld electronic devices while operating a vehicle.*

### Models with Color Audio

1. Press the Phone button.
2. Select Phonebook.
3. The phonebook is stored alphabetically.
4. Select the initial.
5. Select a name.
6. Select a number.  
Dialing starts automatically.



### Models with Display Audio

1. Go to the Phone menu screen.
2. Select Phonebook.
3. Select a name.  
You can also search by letter. Select Search.  
Use the keyboard on the touch screen for entering name, if multiple numbers exist select a number.
4. Select a number.  
Dialing starts automatically.



### ■ Storing Speed Dial Entries

Store up to 20 numbers for quick dialing. To store a speed dial number:

## Models with Color Audio

1. Press the Phone button.
2. Rotate the selector knob to select Speed Dial, then press it.
3. Rotate the selector knob to select Add New, then press it.
4. Rotate the selector knob to select a place to choose a number from, then press it.

From Call History:

Select a number from the call history.

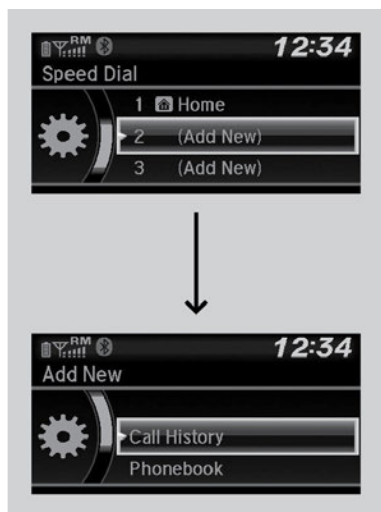
From Phonebook:

Select a number from the connected cell phone's imported phonebook.

From Phone Number:

Input the number manually.

5. When the speed dial is successfully stored, you are asked to create a voice tag for the number. Rotate the selector knob to select Yes or No, then press it.
6. Using the Talk button, follow the prompts to say the name for the speed dial entry.





### Models with Display Audio

1. Go to the Phone Menu screen.
2. Select Speed Dial.
3. Select New Entry.  
From Import from Call History:  
Select a number from the call history.  
From Manual Input:  
Input the number manually.  
From Import from Phonebook:  
Select a number from the connected cell phone's imported phonebook.
4. When the speed dial is successfully stored, you are asked to create a voice tag for the number. Select Yes or No.
5. Select Record, or use Talk button and follow the prompts to complete the voice tag.

