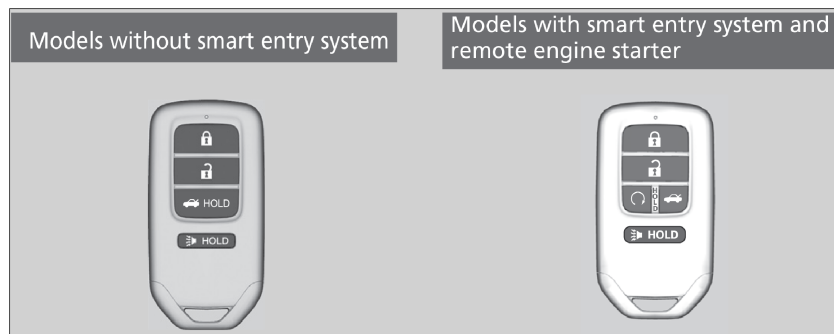


VEHICLE CONTROLS

Various controls necessary for operating and driving the vehicle.

Using the Remote Transmitter

Lock or unlock the doors and trunk.



NOTICE

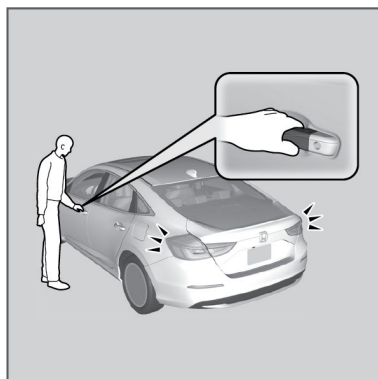
Leaving the remote transmitter in the vehicle can result in theft or accidental movement of the vehicle. Always take it with you whenever you leave the vehicle unattended.

Smart Entry System*¹

When you carry the remote transmitter, in a pocket or purse and it is outside the vehicle and within range (about 32 inches or 80 cm), you can lock or unlock the doors, and open the trunk without handling the transmitter.

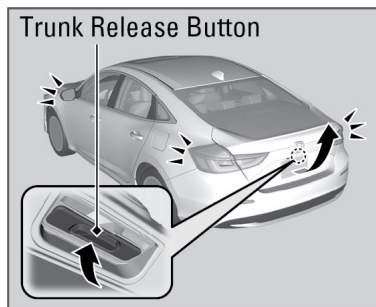
■ Unlocking/Locking the Doors and Trunk

To unlock: Grab the driver's door handle to unlock the driver's door. Grab the front passenger's door handle to unlock all the doors. You can customize this feature's behavior.

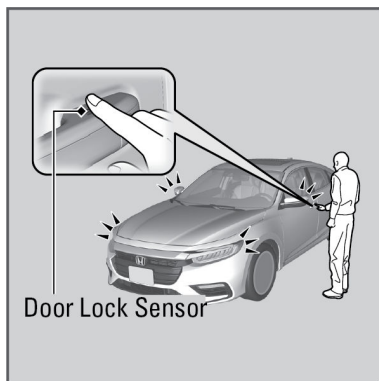


**1 - If equipped*

Press the trunk release button.



To lock: Press the door lock sensor on the front door.



Note: System range is affected by radio signals from other devices (for example, cell phones or tablets) so for best results, carry the remote transmitter separately from these devices.

■ Walk Away Auto Lock®

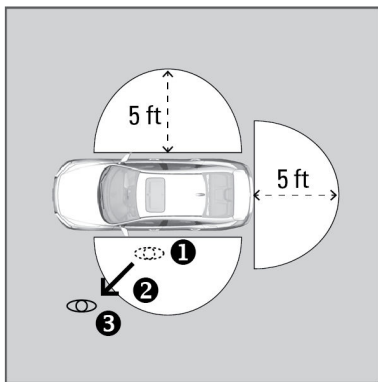
When you walk away from the vehicle while carrying the remote transmitter, the doors and trunk can automatically lock if the following conditions are met:

- The remote transmitter is within a range of 5 feet (1.5 m).
- All doors and the trunk are closed.
- There is not an additional remote transmitter inside the vehicle.

Follow these steps:

1. Exit the vehicle, close the door and stay near it. Listen for a beep. The system is activated.
2. Walk at least 5 feet (1.5 m) away.
3. Listen for a beep and look for the lights to flash. The doors lock.

The auto lock function is set to OFF as the factory default setting. It can be set to ON using the audio/information screen. If you set the auto lock function to ON, only the remote transmitter that was used to unlock the driver's door prior to the setting change can activate auto lock. To turn on this feature, follow the steps below:



Using the Audio/Information Screen

1. Press the HOME button then select **Settings**.
2. Select **Vehicle**.
3. Select **Door/Window Setup**.
4. Select **Walk Away Auto Lock®**, then select **ON**.

■ Customizing Door Lock and Unlock Settings

Customize the auto door lock and door unlock settings to your preference.

Using the Driver Information Interface

1. From the HOME screen, select **Vehicle Settings**.
2. Select **Door Setup**.
3. Select **Auto Door Lock** or **Auto Door Unlock** to customize.

HANDLING THE UNEXPECTED

Learn about what to do in critical or emergency situations.

Smart Entry System Battery Strength

If the beeper sounds, the **To Start, Hold Remote Near Start Button** message appears on the driver information interface, and the indicator on the **POWER** button flashes, and the **READY** indicator does not come on. Turn on the power system as follows:

1. Touch the center of the **POWER** button with the **A** logo on the keyless access remote while the indicator on the **POWER** button is flashing. The buttons on the keyless access remote should be facing you.

The **POWER** button flashes for about 30 seconds.

2. Depress the brake pedal and press the **POWER** button within 10 seconds after the beeper sounds and the **POWER** button changes from flashing to on.

If you do not depress the pedal, the mode will change to **ACCESSORY**.

