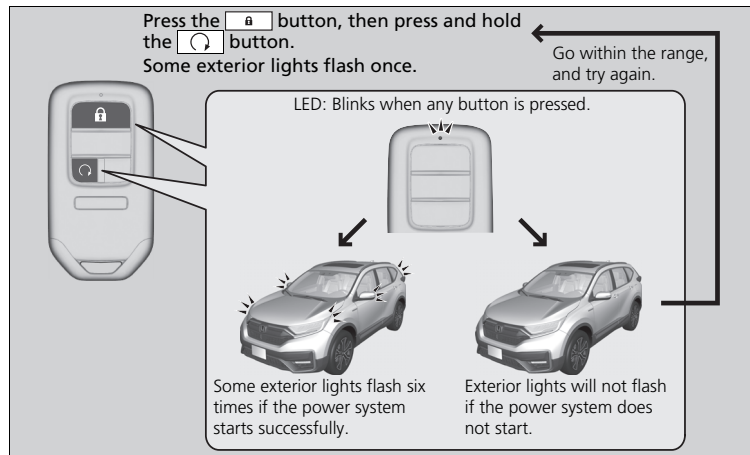


■ Remote Engine Start

You can remotely turn the power system on using the smart entry remote.

■ To turn the power system on



The power system is on for up to 10 minutes without you starting the vehicle. To extend the time for another 10 minutes during the first 10 minutes, press the button, then press and hold the button.

- Some exterior lights flash six times if a 10-minute extension request was transmitted successfully.

⌘ Remote Engine Start

⚠ WARNING

Carbon monoxide gas is toxic and can rapidly accumulate in closed or even partly enclosed areas.

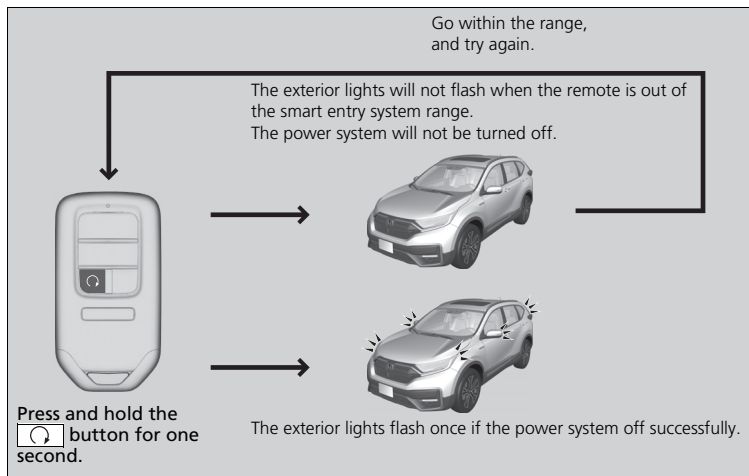
Breathing it can cause unconsciousness and even kill you.

Never use the remote engine starter with the vehicle parked in a garage or other areas with limited ventilation.

The remote engine start may violate local laws. Before using the remote engine start, check your local laws.

If there are buildings and obstacles between your vehicle and the remote, the range will be reduced. This distance may vary by external electrical interference.

■ To turn the power system off



* Not available on all models

⌘ Remote Engine Start

The power system may not be turned on by the remote engine start if:

- You have disabled a remote engine start setting using the driver information interface* or audio/information screen*.
- The power mode is not in VEHICLE OFF (LOCK).
- The transmission is in a position other than **[P]**.
- The hood is open, or any door or the tailgate is unlocked.
- You have already used the remote twice to turn the power system on.
- Another registered smart entry remote is in the vehicle.
- There is an antenna failure.
- The door is unlocked with the built-in key.
- The engine oil pressure is low.
- The engine coolant temperature is extremely high.
- The security system alarm is not set.

⌘ To turn the power system off

The power system may be turned off while it is on if:

- You do not start the vehicle within 10 minutes of turning the power system on with the button on the smart entry remote.
- The power system is turned off by using the smart entry remote.
- The door is unlocked with the built-in key.
- The hood is open.
- The transmission is in a position other than **[P]**.
- The engine coolant temperature is extremely high.
- The engine oil pressure is low.
- The Malfunction Indicator Lamp comes on if there is a problem with the emissions control systems.

⌘ Remote Engine Start

While the power system is on, the vehicle will automatically precondition inside the vehicle.

When it is warm outside:

- The climate control system is activated in recirculation mode.

When it is cold outside:

- The defroster is activated at a moderately warm temperature.
- The rear defogger and door mirror heaters* are activated.
- The seat and heated steering wheel are activated*

* Not available on all models