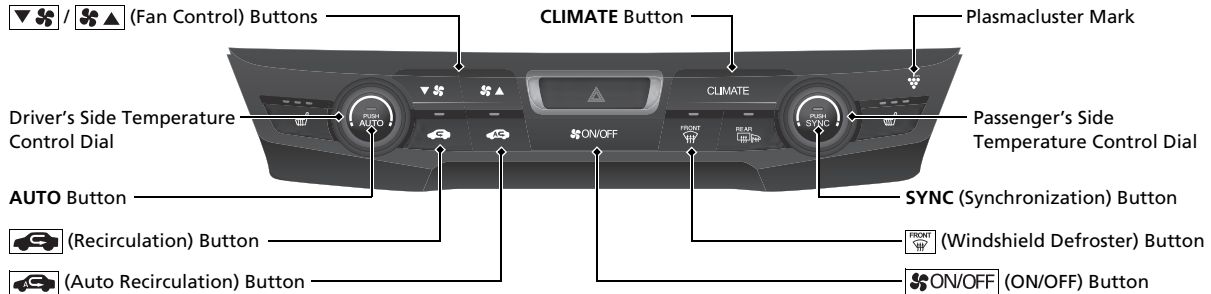
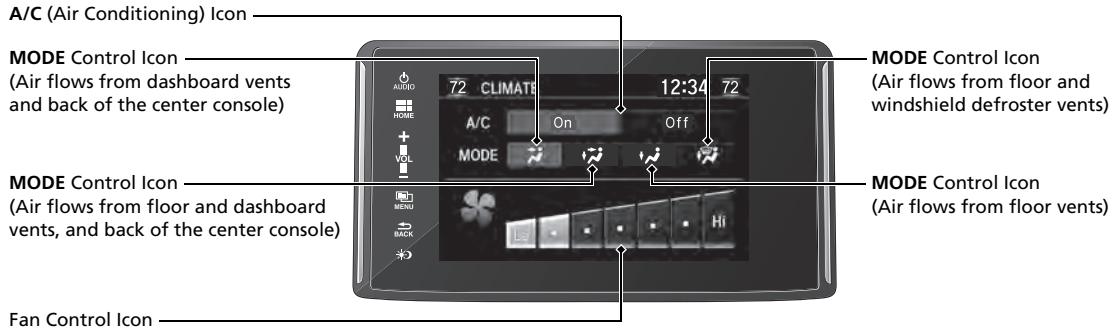


# Climate Control System

- Press the **AUTO** button to activate the climate control system.
- Press the **ON/OFF** button to turn the system on or off.
- Press the **FRONT WIPER** button to defrost the windshield.

The climate control system is voice operable.



## Using Automatic Climate Control

The automatic climate control system maintains the interior temperature you select. The system also selects the proper mix of heated or cooled air that raises or lowers the interior temperature to your preference as quickly as possible.

### ☒ Using Automatic Climate Control


Press the **CLIMATE** button to display **A/C, MODE**, fan control information on the audio/information screen to operate manually. Select icon to turn on or off **A/C**, change the vent mode, or change the fan speed.

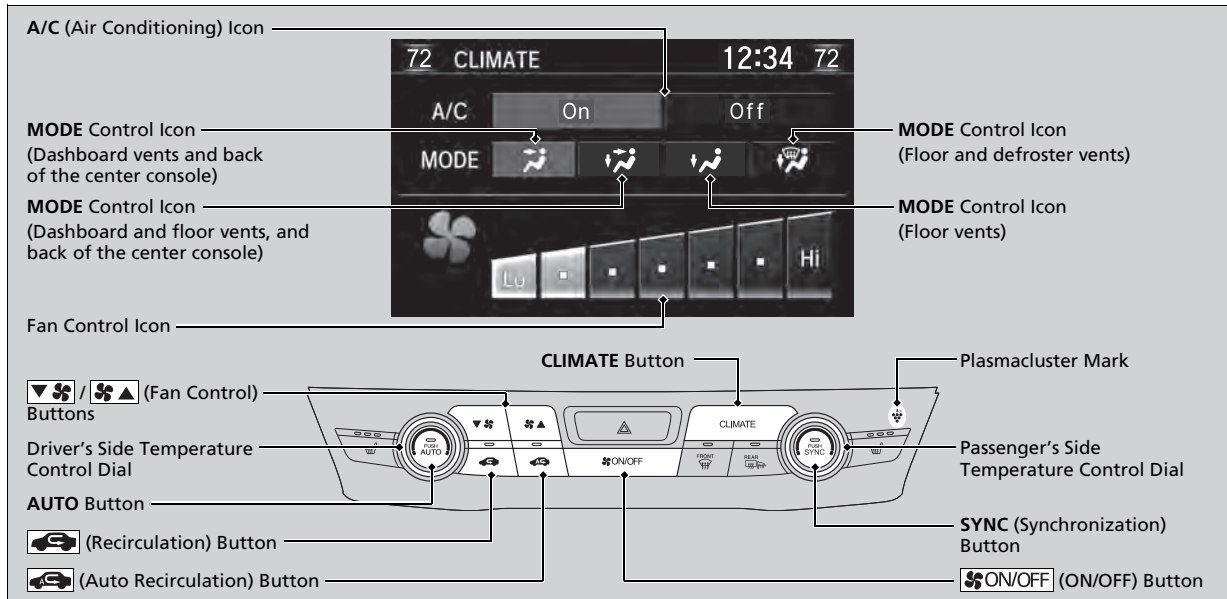
If any buttons/icons are pressed while using the climate control system in auto, the function of the button/icon that was pressed will take priority. The **AUTO** indicator will go off, but functions unrelated to the button/icon that was pressed will be controlled automatically.

To prevent cold air from blowing in from outside, the fan may operate at low speed for a while after the **AUTO** button has been pressed.

If the interior is very warm, you can cool it down more rapidly by partially opening the windows, turning the system on auto, and setting the temperature to low. Change the fresh air mode to recirculation mode until the temperature cools down.

When you set the temperature to the lower or upper limit, **Lo** or **Hi** is displayed.

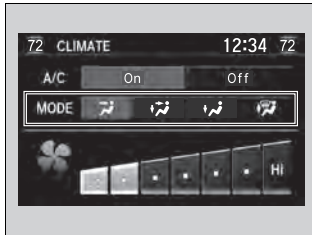
Pressing the  button switches the climate control system between on and off. When turned on, the system returns to your last selection.



Use the system when the power system is on.

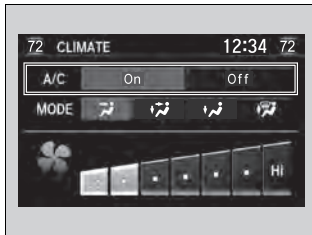
1. Press the **AUTO** button.
2. Adjust the interior temperature using the driver's side or passenger's side temperature control dial.
3. Press the **ON/OFF** (ON/OFF) button to cancel.

### ■ Switching the vent mode



1. Press the **CLIMATE** button.
2. Select a desired vent mode icon.

### ■ A/C on and off



1. Press the **CLIMATE** button.
2. Select **On** or **Off**.

### ☒ Using Automatic Climate Control

When you unlock the doors with your remote, the driver's ID (**DRIVER 1** or **DRIVER 2**) is detected, and the climate control settings are turned to the respective mode automatically when you set the power mode to ON.


The High Voltage battery level being low may reduce the climate control system performance.


If any icons are not selected within several seconds after the display is switched, it returns to the previous screen. In this case, press the **CLIMATE** button again.

You can change the length of time the climate control display stays on.

### ■ Switching between the recirculation and fresh air modes


Press the  (recirculation) or  (auto recirculation) button to switch the mode depending on environmental conditions.

 Recirculation mode (indicator on): Recirculates air from the vehicle's interior through the system.

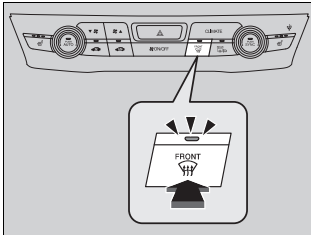
 Auto mode (indicator on): Automatically switch between the recirculation and fresh air modes most suitable to environmental conditions. If the ambient temperature is low, the mode may not change to recirculation to keep the windows from fogging up.


Fresh air mode (indicators of recirculation and auto recirculation off): Maintains outside ventilation. Keep the system in fresh air mode in normal situations.


### ☒ Switching between the recirculation and fresh air modes

While the climate control system is in auto,  indicator comes on.

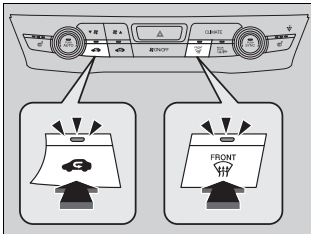
## Defrosting the Windshield and Windows



Pressing the  button turns the air conditioning system on and automatically switches the system to fresh air mode.

Press the  button again to turn off, the system returns to the previous settings.

### To rapidly defrost the windows



1. Press the  button.
2. Press the  button.

### Defrosting the Windshield and Windows

**For your safety, make sure you have a clear view through all the windows before driving.**

Do not set the temperature near the upper or lower limit.

When cold air hits the windshield, the outside of the windshield may fog up.

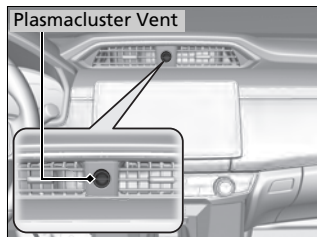
If the side windows fog up, adjust the vents so that the air hits the side windows.

### To rapidly defrost the windows

After defrosting the windows, switch over to fresh air mode or auto mode.

If you keep the system in recirculation mode, the windows may fog up from humidity. This impedes visibility.

## Plasmacluster Air Purifier



Using air flow generated by the climate control system or the fan blower, the Plasmacluster air purifier helps rid the interior of the vehicle of air-borne bacteria and odors as well as inhibit mold growth.

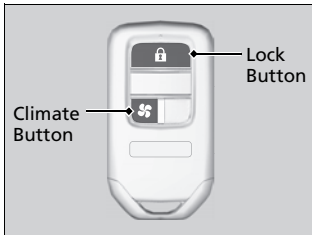
- ▶ The effectiveness of the purifier is dependent on the condition of the interior and the individuals who use the vehicle.

### Plasmacluster Air Purifier

The Plasmacluster name and its mark are registered trademarks of Sharp Inc.

## ■ Turning the Climate Control System On and Off with the Remote

You can operate the climate control system from outside the vehicle.



### ■ To turn on the system

1. Press the lock button.
  - ▶ Some exterior lights flash.
2. Within about five seconds, press and hold the climate button.
  - ▶ Some exterior lights flash.
  - ▶ After about five seconds, some exterior lights flash six times and the climate control system is turned on.

### ■ To turn off the system

- Press and hold the climate button.
- ▶ Some exterior lights flash and the climate control system is turned off.

## ⓘ Turning the Climate Control System On and Off with the Remote

### ⚠ WARNING

Make sure that no one is inside the vehicle when you use the remote climate control system. After a certain period of time has elapsed, the system shuts off. During this time, the interior of the vehicle may heat up or cool down depending on ambient temperatures. If a child is left inside the vehicle, extreme temperature exposure can result in death or serious injury of the child.

The climate control system automatically turned off when any of the following conditions are met.

- The system has been operated for more than 30 minutes.
- The High Voltage battery level becomes low.
- A door or the hood is opened.
- The power mode is set to any mode other than OFF.
- The brake pedal is being depressed.

The climate control system does not operate with a remote transmitter when any of the following conditions are met.

- A door or the hood is not closed.
- The power mode is set to any mode other than OFF.
- The brake pedal is being depressed.
- The High Voltage battery level is low.