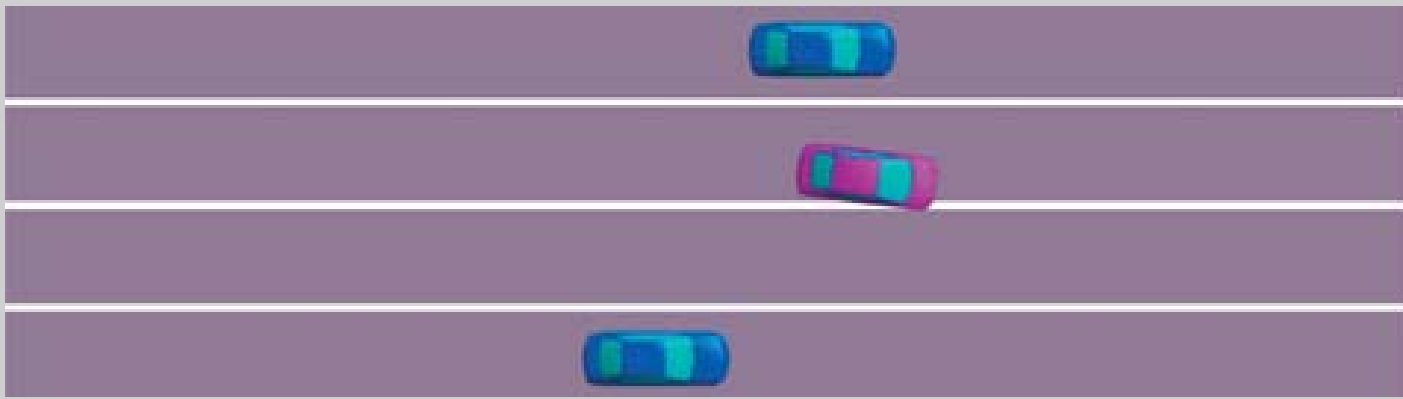


LANE DEPARTURE WARNING (LDW) (if equipped)

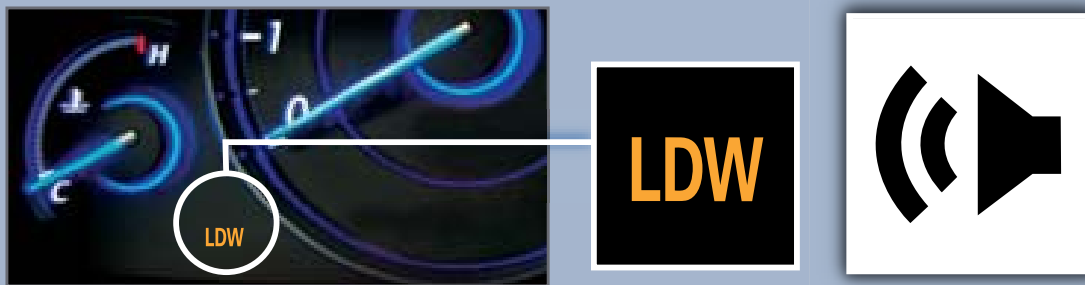
Alerts you if your vehicle begins to move out of a detected lane without the turn signal activated.

How It Works

A camera mounted between the windshield and the rearview mirror determines if your vehicle begins to move away from the center of a detected lane while driving between 40-90 mph.



If you cross a detected lane line without using your turn signal, the LDW indicator flashes and a beep sounds.



LDW may not activate under certain conditions. See your Owner's Manual for more information.

Turning LDW On or Off

Press the LDW button to turn the system on or off.



LDW On



LDW Off

