

# LANEWATCH™

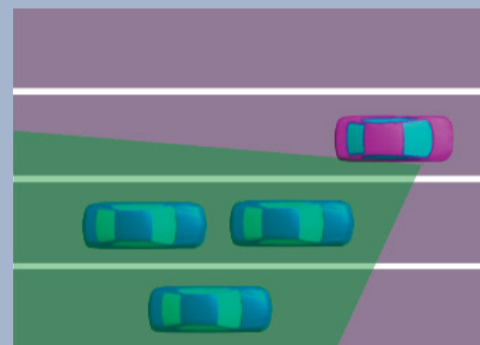
Helps you check your right blind spot when you make a lane change to the right.

## How It Works

When the right turn signal is activated, a camera located in the passenger side door mirror shows the right rear area outside your vehicle on the display.



### Visibility Area



## LaneWatch Display

Press the LaneWatch button on the turn signal switch to view a constant real-time display. Press it again to turn the display off. The display still appears when the right turn signal is activated.



See your Owner's Manual for more information on adjusting LaneWatch settings.