

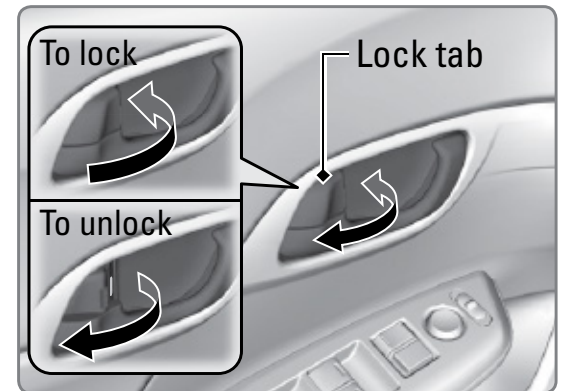
## Door Operation

Use several methods to lock or unlock the doors.

### ■ Using the Lock Tab

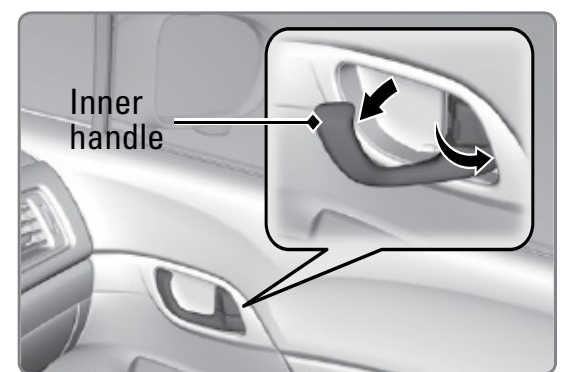
**To unlock:** When you unlock the door using the lock tab on the driver's door, only the driver's door unlocks.

**To lock:** When you lock the door using the lock tab on the driver's door, all the other doors lock at the same time.



### ■ Using the Front Door Inner Handle

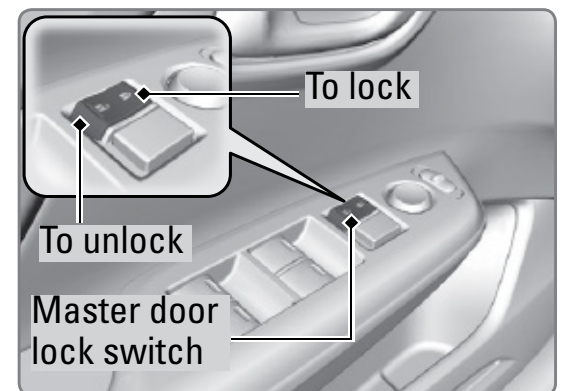
When you pull either front door inner handle, the door unlocks and opens. On vehicles with smart entry, pulling the driver's door inner handle unlocks all other doors.



### ■ Using the Master Door Lock Switch

**To unlock:** Press the unlock side of the switch to unlock all doors.

**To lock:** Press the lock side of the switch to lock all doors.

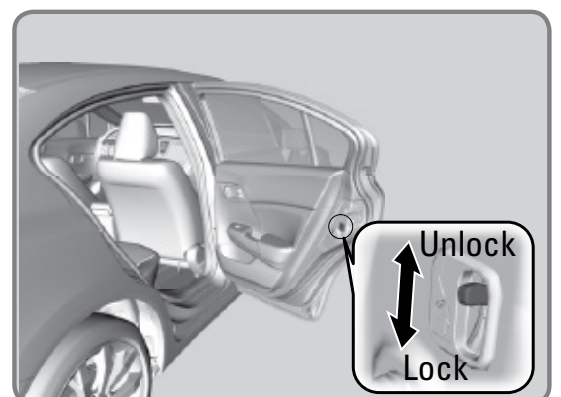


### ■ Childproof Door Locks\*

The childproof door locks prevent the rear doors from being opened from the inside regardless of the position of the lock tab.

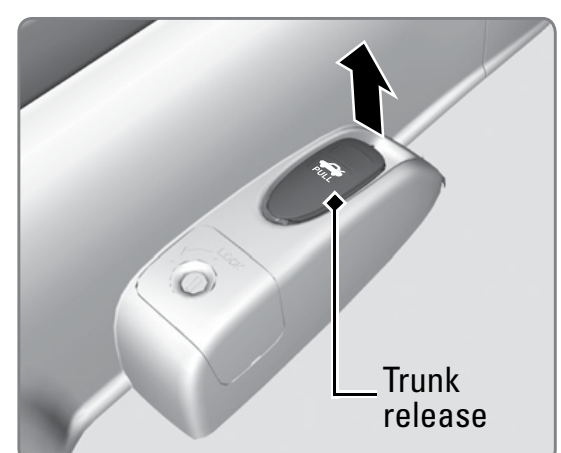
Slide the lever in the rear door to the lock position, and close the door.

Open the door using the outer door handle.



### ■ Using the Trunk Opener

Pull the trunk release near the bottom of the driver's seat to unlock and open the trunk.



*\*if equipped*