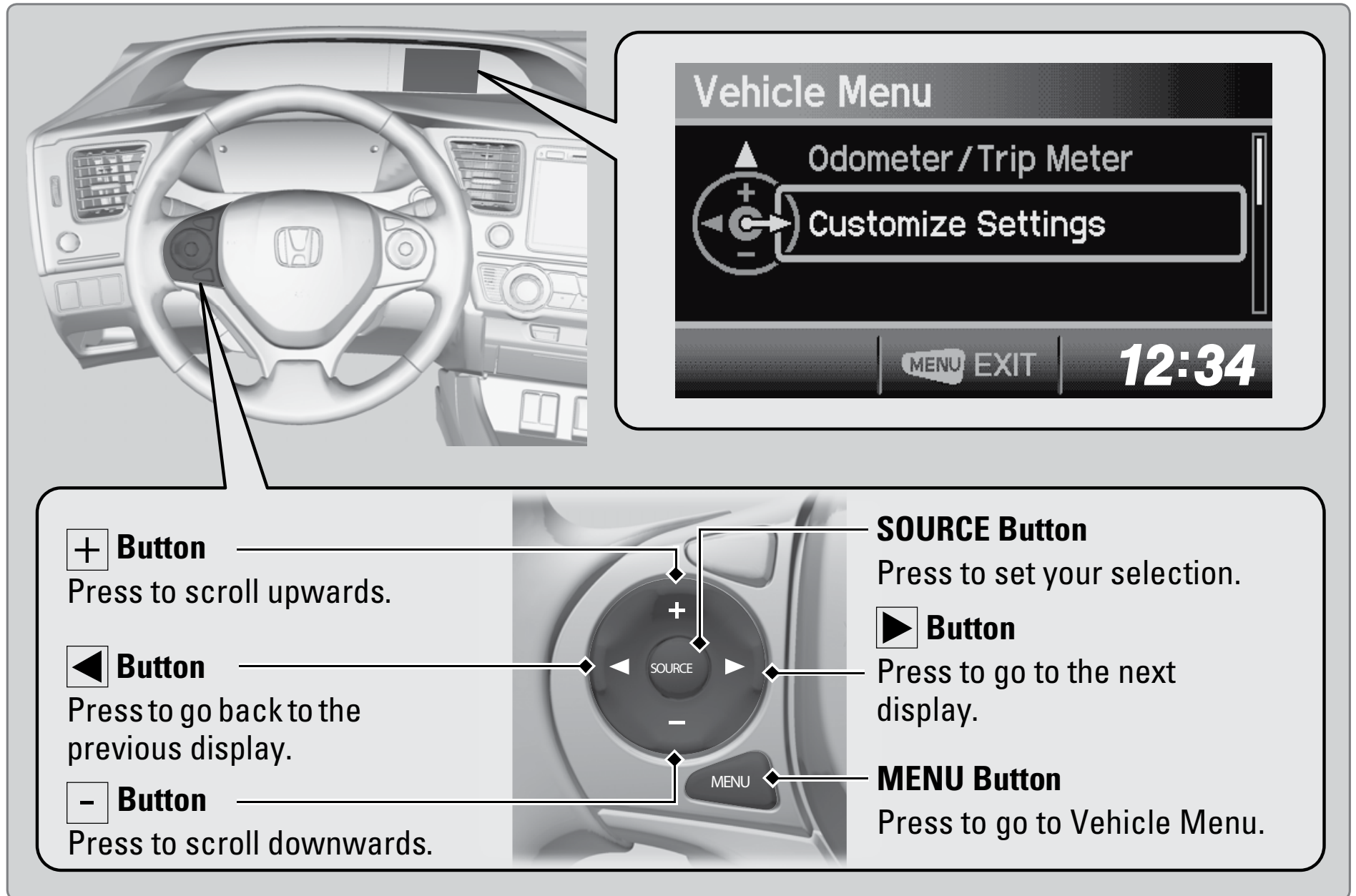


Customized Features

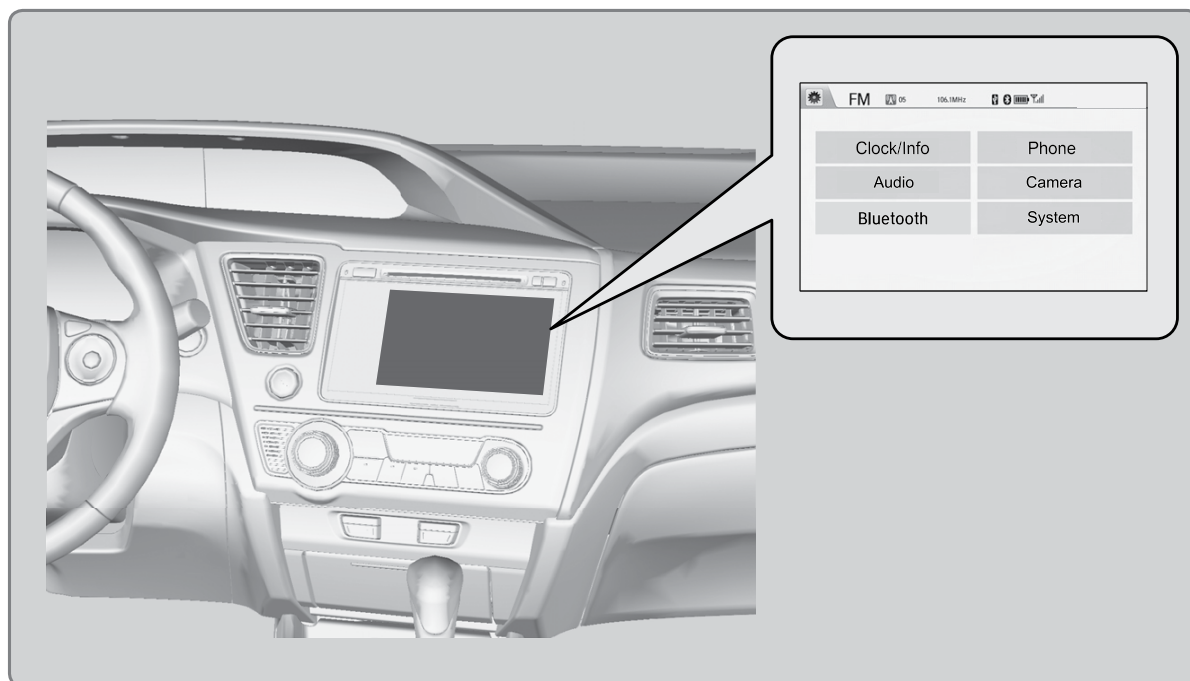
Use the Vehicle Menu in the i-MID to customize certain features, such as the display, the trip computer, and door locking/unlocking. Use the steering wheel controls to make and enter selections when the vehicle is stopped.



■ Changing Settings Using the Touchscreen

Select items on the touchscreen to make and enter selections.

1. Select SETTINGS.
2. Select an option (Clock/Info, Audio, Bluetooth, Phone, Camera, System, or Navi*).
3. Select a setting option, and make your preferred changes.
4. Press BACK to exit the menus.

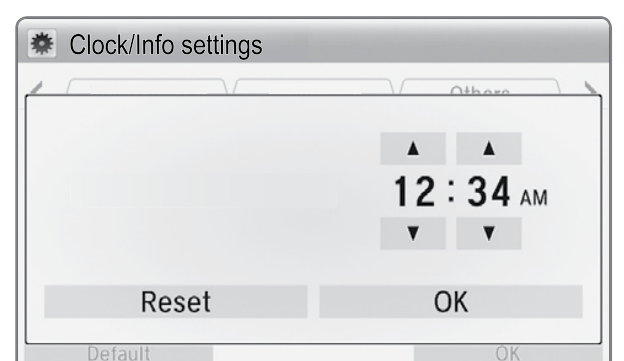


**if equipped*

■ Setting the Clock

Touch items to make selections.

1. Select Settings.
2. Select Clock/Info.
3. Select Clock Adjustment.
4. Adjust the hour and minute values.
5. Select OK when complete.



On vehicles with navigation, the time is automatically set using GPS signals.