

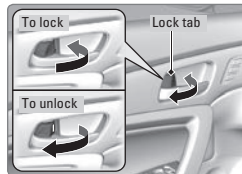
Door Operation

Use several methods to lock or unlock the doors.

■ Using the Lock Tab

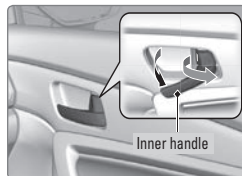
To unlock: Pull the lock tab rearward. When you unlock the door using the lock tab on the driver's door, only the driver's door unlocks.

To lock: Push the lock tab forward. When you lock the door using the lock tab on the driver's door, the passenger's door locks at the same time.



■ Using the Inner Handle

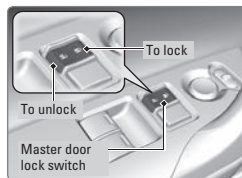
When you pull either door inner handle, the door unlocks and opens. On vehicles with smart entry, pulling the driver's door inner handle also unlocks the passenger's door.



■ Using the Master Door Lock Switch

To unlock: Press the unlock side of the switch to unlock both doors.

To lock: Press the lock side of the switch to lock both doors.



■ Using the Trunk Opener

Pull the trunk release near the bottom of the driver's seat to unlock and open the trunk.

