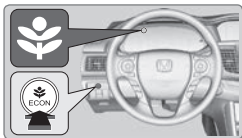


Eco Assist System

Can help improve fuel economy by adjusting the performance of the engine, transmission, climate control system, and cruise control.

■ ECON Button

Press the ECON button to turn the system on or off. The ECON Mode indicator and a message in the multi-information display* appear when the system is turned on.



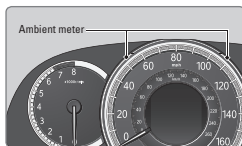
■ Ambient Meter

Color-coded bars change based on your driving style and brake or accelerator pedal operation.

Green: Fuel-efficient driving

Light green: Moderate acceleration/deceleration

White: Aggressive acceleration/deceleration



**if equipped*