

INSTRUMENT PANEL

Learn about the indicators, gauges, and displays related to driving the vehicle.



Indicators briefly appear with each engine start and then go out. Red and amber indicators are most critical. Blue and green indicators are used for general information.

Malfunction Indicators

These are the most critical indicators. If they come on and stay lit while driving or at any other time, there may be a problem. See your dealer if necessary.



Brake system

- Brake fluid is low.
- The brake system has a problem.

Press the brake pedal lightly to check pedal pressure. If normal, check the brake fluid level when you stop. If abnormal, take immediate action. If necessary, downshift the transmission to slow the vehicle using engine braking. Have your vehicle repaired immediately.



Low oil pressure

Engine oil pressure is low. Stop in a safe place. Open the hood. Check the oil level, and add oil if necessary. If the indicator does not turn off, have your vehicle repaired immediately.



Charging system

The battery is not charging. Turn off all electrical items, but do not turn off the vehicle to prevent further battery discharge. Have your vehicle repaired immediately.



Supplemental Restraint System (SRS)

There is a problem with one of the airbag systems or seat belt tensioners.

**Smart Entry system***

There is a problem with the smart entry system.

**Malfunction indicator lamp** (check engine light)

- The emissions control system may have a problem, or the fuel cap is loose or missing.
- (Blinks) A misfire in the engine's cylinders is detected. Stop in a safe place, and wait for the engine to cool down.

**Anti-lock Brake System (ABS)**

There is a problem with the anti-lock brake system. Your vehicle still has normal braking ability, but no anti-lock function.

**Tire Pressure Monitoring System (TPMS)***

There is a problem with the tire pressure monitoring system, or the vehicle is fitted with the compact spare tire.

**Collision Mitigation Braking System™ (CMBS™)***

There is a problem with system, the radar sensor is blocked, or the temperature is too high.

**Lane Departure Warning (LDW)***

There is a problem with the system, the camera is blocked, or the temperature is too high.

**Lane Keeping Assist System (LKAS)***

There is a problem with the system, the camera is blocked, or the temperature is too high.

**Vehicle Stability Assist (VSA®)**

There is a problem with the VSA system or hill start assist system.

**Adaptive Cruise Control (ACC)***

There is a problem with the system, the radar sensor is blocked, or the temperature is too high.

**Electric Power Steering (EPS)**

There is a problem with the EPS system. Stop in a safe place, and restart the vehicle.

**Starter system***

There is a problem with the starter system. Press and hold the ENGINE START/STOP button for up to 15 seconds while pressing the brake pedal and manually start the engine.

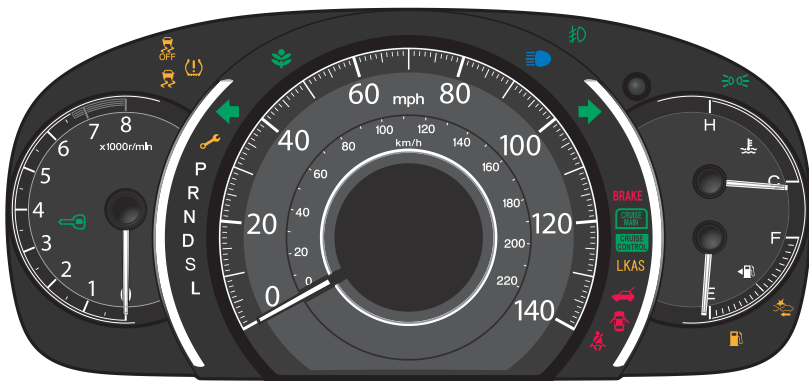
**All Wheel Drive (AWD)***

There is a problem with the AWD system. If the indicator blinks, the system is overheated and inactive. Stop in a safe place, and idle until the indicator goes off.



Brake system

There is a problem with one of the braking systems. Your vehicle still has normal braking ability.



Condition Indicators

These indicators may require you to perform an action.



Parking brake

Release the parking brake before driving. You will hear a beep if you drive with it not fully released.



Seat belt reminder

Make sure seat belts are fastened for you and all passengers. The indicator blinks and beeps sound continuously if you or your front passenger has not fastened your seat belts when you begin driving. If the indicator remains on after seat belts are fastened, see your dealer.



Door/tailgate open*

A door or the tailgate is open.



Tailgate open*

The tailgate is open.



Low fuel

Refuel as soon as possible. If the indicator blinks, there is a problem with the fuel gauge. See your dealer.



Maintenance Minder™*

Scheduled maintenance for your vehicle is due.

**Low tire pressure**

Stop in a safe place, check tire pressures, and inflate tire(s) if necessary. If the indicator remains on after tire inflation, you need to calibrate the system. The indicator also appears if your vehicle is fitted with the compact spare tire. Have your regular tire repaired or replaced as soon as possible.

**Immobilizer**

Your key or remote transmitter cannot be recognized by the vehicle. If the indicator blinks, you may not be able to start the engine. Turn the vehicle off, and then on again. If it continues to blink, there may be a problem with the system. See your dealer.

On/Off Indicators

These indicators remind you when an item is on or off.



VSA off



High beams on



VSA engaged (blinking)



Exterior lights on



CRUISE MAIN* on



ECON mode on



CRUISE CONTROL* on



LKAS LKAS* off



Turn signals/ hazards on



CMBS* off



Fog lights* on