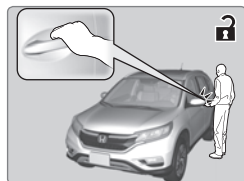


Smart Entry System*

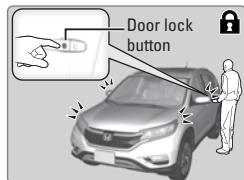
When you carry the remote transmitter (for example, in a pocket or purse) and it is outside the vehicle and within range (about 32 inches or 80 cm), you can lock or unlock the doors and tailgate without handling the transmitter.

■ Unlocking/Locking the Doors

To unlock: Grab the driver's door handle when the vehicle is off to unlock the driver's door. Grab the front passenger's door handle to unlock all doors and the tailgate.

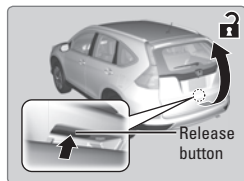


To lock: Press the door lock button on the front door handle when the vehicle is off. If the remote transmitter is inside the vehicle, the doors will not lock.

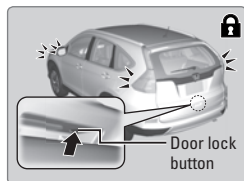


■ Unlocking/Locking the Tailgate

To unlock: Press the tailgate release button under the tailgate handle to unlock the tailgate. The vehicle can be on or off.



To lock: Press the tailgate lock button to lock the tailgate and all doors. If the remote transmitter is inside the vehicle, the tailgate and doors will not lock.



*if equipped

VEHICLE CONTROLS

Learn about the various controls necessary for operating and driving the vehicle.

Using the Key or Remote Transmitter

Lock or unlock the doors and tailgate.

Tailgate button*: Press to unlock the tailgate.

Panic button: Press and hold to sound the alarm for 30 seconds. Press again to cancel.



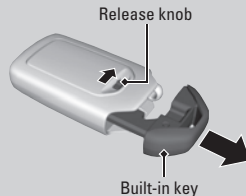
Lock button: Press to lock the doors and tailgate. Press again for audible verification.

Unlock button: Press once to unlock the driver's door. Press again to unlock all doors and the tailgate.

Power tailgate button*: Press and hold to unlock and open the power tailgate. Press again to close it.



Built-in key: Slide the release knob on the back of the transmitter and pull out the built-in key.



NOTICE

Leaving the key or remote transmitter in the vehicle can result in theft or accidental movement of the vehicle. Always take it with you whenever you leave the vehicle unattended.