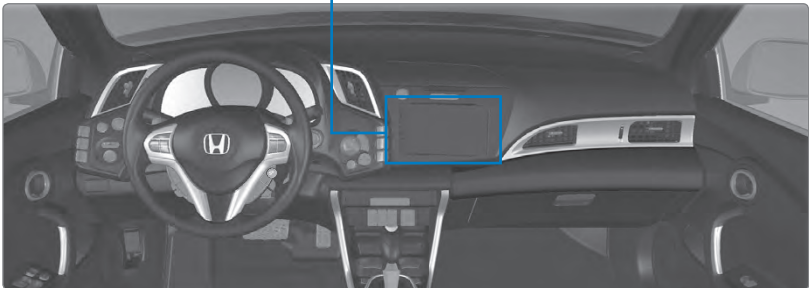
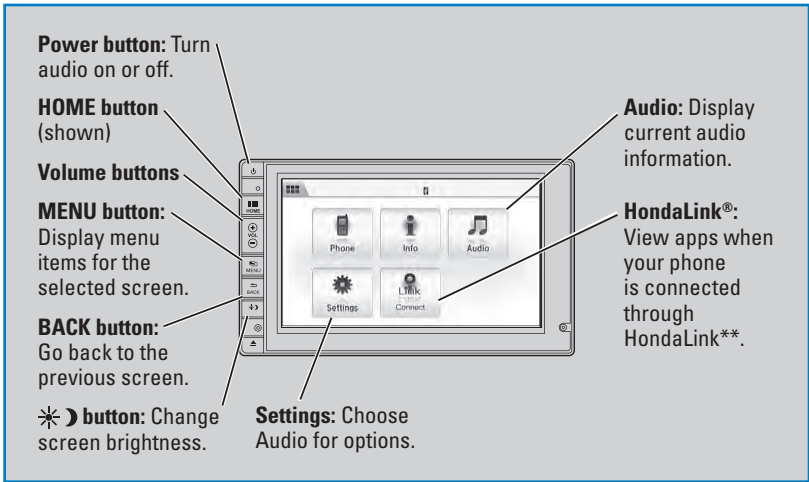


Touchscreen Operation

Use simple gestures—including touching, swiping, and scrolling—to operate certain audio functions.

Some items may be grayed out during driving to reduce the potential for distraction. You can select them when the vehicle is stopped or use voice commands*.

Wearing gloves may limit or prevent touchscreen response.



**if equipped*

***HondaLink can be accessed only if the app is installed on your smartphone, and the phone is connected to the system.*

■ Changing Icon Order

You can change the order of the icons on the HOME screen.

1. From the HOME screen, select Settings.
2. Select System.
3. Select Home.
4. Select Home Screen Edit Order.
5. Select and hold the icon you want to move and slide it to a different position.

