

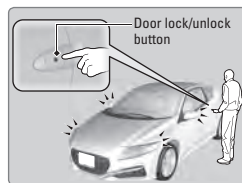
Smart Entry System

When you carry the remote transmitter (for example, in a pocket or purse) and it is outside the vehicle and within range (about 32 inches or 80 cm), you can lock or unlock the doors and hatch without handling the transmitter.

■ Locking/Unlocking the Doors

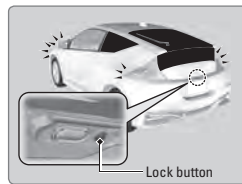
To lock: Press the button on the door handle when the vehicle is off to lock or unlock the driver's door. If the remote transmitter is inside the vehicle, the doors will not lock.

To unlock: Press and hold the button on the driver's or passenger's door to unlock both doors and the hatch.

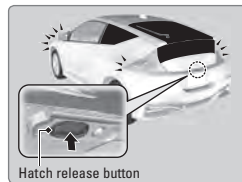


■ Locking/Unlocking the Hatch

Press the lock button on the hatch to lock both doors and the hatch.



Press the hatch release button to unlock both doors and the hatch.



Using the Remote Transmitter

Lock or unlock the doors and hatch.

Lock button: Press to lock the doors and hatch. Press again for audible verification.

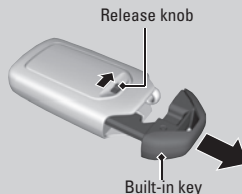
Unlock button: Press once to unlock the driver's door. Press again to unlock all doors and the hatch.



Hatch button: Press and hold to unlock and open the hatch.

Panic button: Press and hold to sound the alarm for 30 seconds. Press again to cancel.

Built-in key: Slide the release knob on the back of the transmitter and pull out the built-in key.



NOTICE

Leaving the key or remote transmitter in the vehicle can result in theft or accidental movement of the vehicle. Always take it with you whenever you leave the vehicle unattended.

**if equipped*