

BLUETOOTH® HANDSFREELINK® (HFL)

Make and receive phone calls through your vehicle's audio system. Visit handsfreelink.honda.com to check if your phone is compatible.

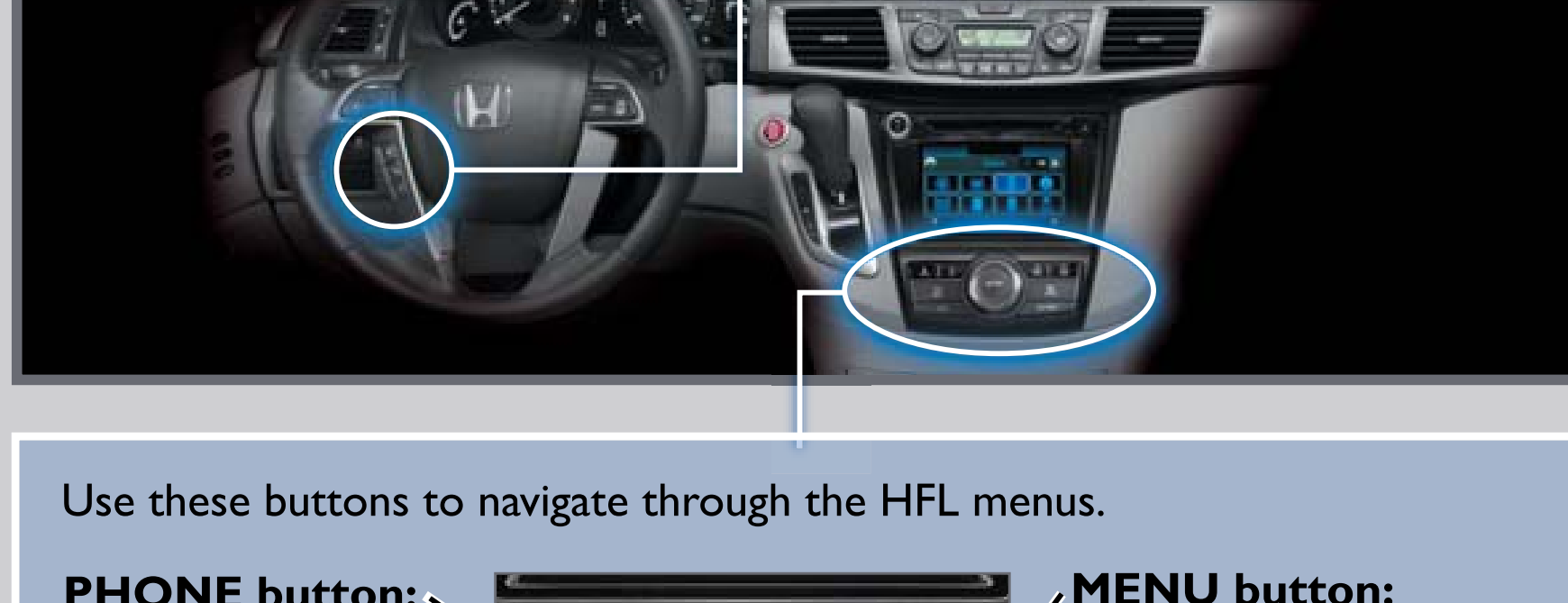
To reduce the potential for driver distraction, certain functions may be inoperable or grayed out while the vehicle is moving. Stop or pull over to perform the function.

How to Use HFL

Pick-Up button: Answer an incoming call.

Hang-Up/Back button: End a call, decline an incoming call, or cancel an operation.

Talk button: Make a call using a stored voice tag, phonebook name, or phone number.



Use these buttons to navigate through the HFL menus.

PHONE button: Go directly to the phone screen.

BACK button: Press to cancel an operation or return to the previous screen.

Interface dial: Rotate or move up/down/left/right to scroll through selections, and press to make a selection.



MENU button: From the Phone screen, access Speed Dial, Phonebook, Dial, Redial, Call History, and Text/E-mail.

SETTINGS button: Go to Phone Settings to pair a phone and select other options.

SETTINGS button: Go to Phone Settings to pair a phone and select other options.

Pairing Your Phone

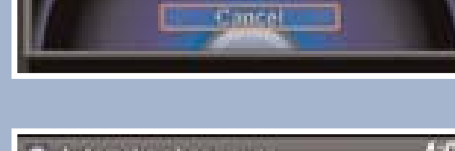
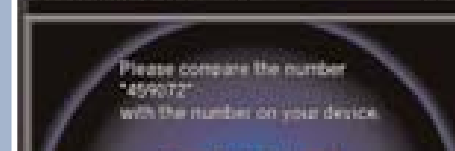
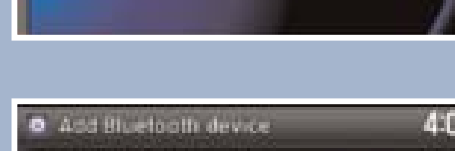
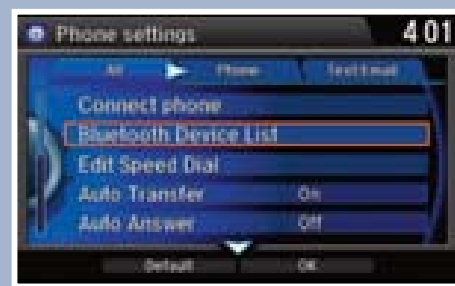
Pair your phone when the vehicle is stopped to begin using hands-free phone and related audio functions.

Use the interface dial to make and enter selections.

1. Press SETTINGS.
2. Select Phone Settings.
3. Select Bluetooth Device List (if no phone has been paired) or Connect Phone (if pairing an additional phone).
4. Select Add Bluetooth Device.
5. Make sure your phone is in discovery mode and select OK.
6. HFL searches for your phone. Select your phone when it appears on the list.

If your phone does not appear: Select Phone Not Found and search for HandsFreeLink from your phone.

7. HFL gives you a six-digit code. Compare it to the code that appears on your phone. Connect to HFL from your phone.
8. The system asks if you want to enable Phone Synchronization. Select On for automatic phonebook and call history importing.



Receiving a Call

A notification is heard and the incoming call information appears on the display.

Press the Pick-Up button to answer the call.

Press the Hang-Up button to end or decline the call.



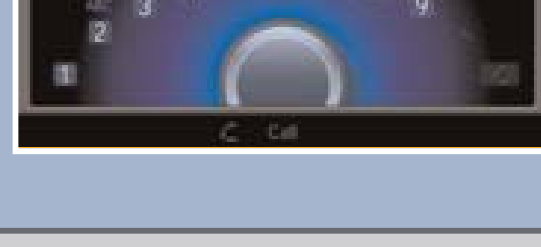
Dialing a Number

Enter a 10-digit phone number to call.

Using the Menu*

Use the interface dial to make and enter selections.

1. Press PHONE.
2. Press MENU.
3. Select Dial.
4. Enter the phone number. Select the green Dial icon to call.

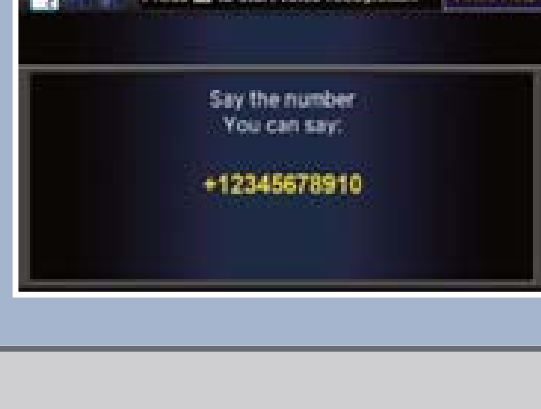


*This feature is inoperable when the vehicle is moving.

Using Voice Commands

Press and release the Talk button before you say a command.

1. Say "Dial by number."
2. Say the complete phone number without pausing. For example, "3-1-0-5-5-5-1-2-3-4."
3. Say "Dial."



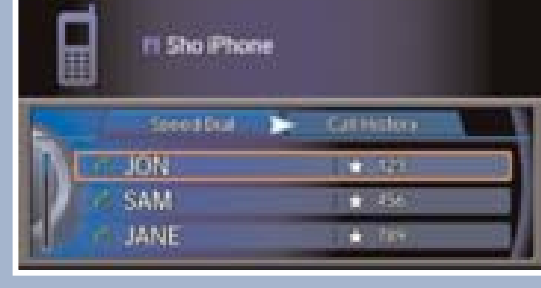
Using Speed Dial or Call History

Store 20 speed dial entries for quick calling, or view the last 20 calls.

Use the interface dial to make and enter selections.

1. Press PHONE.
2. Select Speed Dial. Scroll through the list to find the entry you want to call, and select it.

For Call History, move the interface dial to the right and scroll through the list.



When a voice tag is stored for a speed dial entry, you can make a call using voice commands. Press the Talk button and follow the prompts. See your Owner's Manual for instructions on storing speed dials and voice tags.

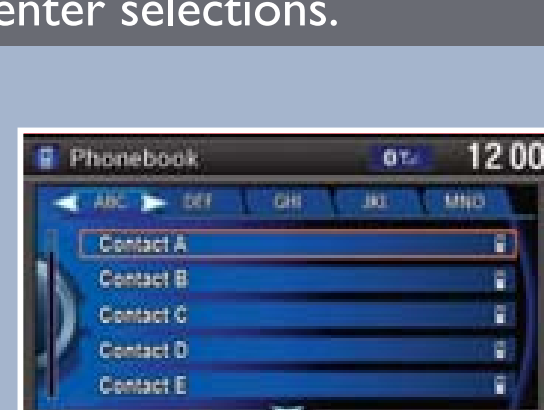
Using the Phonebook

When your phone is paired, its entire phonebook is automatically imported to the system. Phone synchronization must be on for this feature to work.

Using the Menu*

Use the interface dial to make and enter selections.

1. Press PHONE.
2. Press MENU.
3. Select Phonebook.
4. Scroll through the list to find the name and number you want to call, and select it to call.

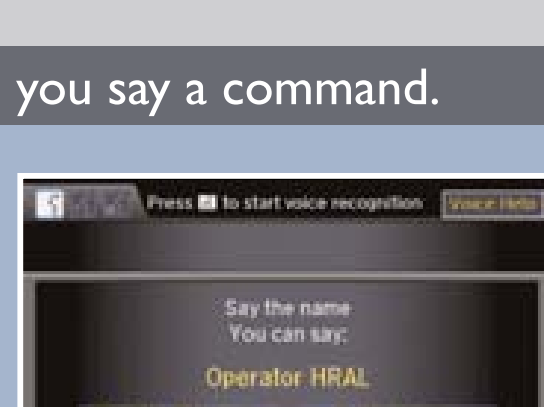


*This feature is inoperable when the vehicle is moving.

Using Voice Commands

Press and release the Talk button before you say a command.

1. Say "Call by name."
2. Say the phonebook name and phone type. For example, "John Smith mobile."



Driver Distraction

To reduce the potential for driver distraction, certain functions may be inoperable or grayed out while the vehicle is moving. You may have to use voice commands, stop or pull over to perform the function.

The chart below shows a list of some operations that are restricted while the vehicle is moving.

Function	Restriction Level While Driving
HFL System (Without Navigation)	
10-key dial	Restricted
Phonebook	Restricted
Speed dial	Not restricted
Speed dial setup	Restricted
Call history	Not restricted
Call history scroll	Not restricted
Redial	Not restricted
Connect to a new phone	Restricted
Connect to a previously paired phone	Not restricted
Manual dial tones	Restricted
Read text	Restricted
Reply to text	Not restricted
HFL System (With Navigation)	
10-key dial	Voice command only
Phonebook	Voice command only. Limited to three screens
Speed dial	Not restricted
Speed dial setup	Restricted
Call history	Not restricted
Call history scroll	Voice command only. Limited to three screens
Redial	Not restricted
Connect to new phone	Restricted