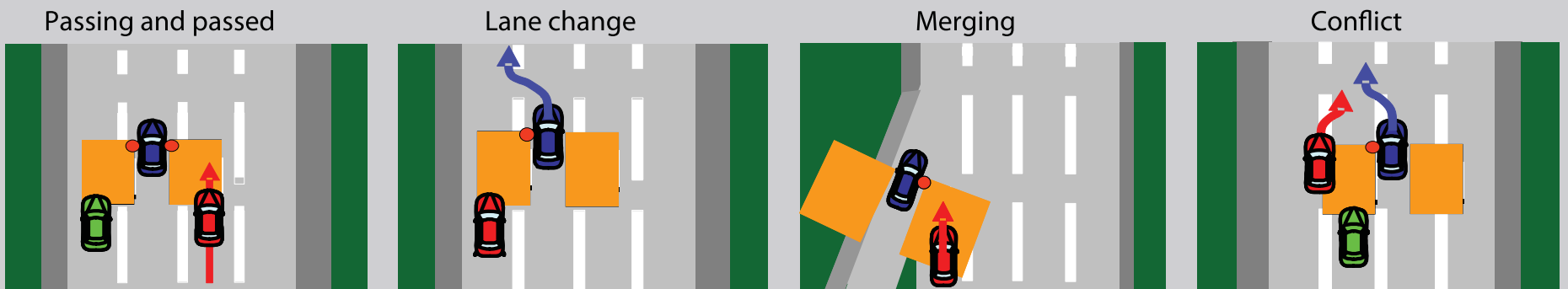


BLIND SPOT INFORMATION (BSI) SYSTEM

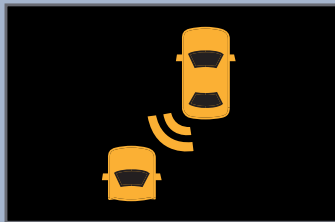
Assists you in determining if there are detected vehicles in your blind spots. Available on Touring Elite.

How It Works

A radar sensor on each corner of the rear bumper alerts you when it detects a vehicle in your left or right blind spots. Minimum operating speed is 20 mph.



When a vehicle is detected in your blind spot, the blind spot indicator turns on and stays lit until the area is clear.



When your turn signal is on and a vehicle is detected, the blind spot indicator blinks and a beep sounds until the area is clear or the turn signal is off.



Changing Settings

Determine the warning type, or turn the system off.

1. Press **SETTINGS**. Use the interface dial to make and enter selections.
2. Select **Vehicle Settings**.
3. Select **Driver Assist System Setup**.
4. Select **Blind Spot Info**.
5. Select an alert type, or turn the system off.
6. Press **BACK** to exit the menu.

