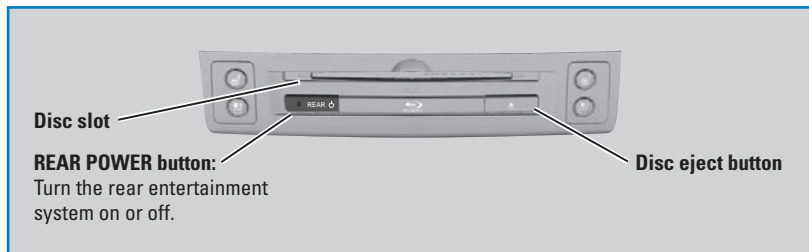


## Rear Entertainment System (RES)\*

Rear passengers can enjoy a different audio or entertainment source than front passengers.



### ■ Operating the System from the Front

You can operate the rear entertainment system using the front audio controls.

1. Press the REAR POWER button to turn the system on.
2. From the Home screen, select Rear.
3. Choose a media source for the rear system.
4. To return to the front audio source, return to the Home screen and select Audio.

### ■ Playing a Disc

Insert a DVD or Blu-ray into the disc slot to begin automatic playback. Use the front or rear controls to operate the disc.

The system also supports audio CDs, CD-Rs, and CD-RWs in MP3, WMA, or AAC formats. Insert a CD to begin automatic playback.

#### NOTICE

Do not use discs with adhesive labels or insert a damaged disc. Inserting these types of discs may cause them to get stuck or damage the audio unit.

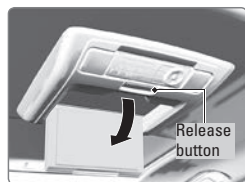
## Overhead Screen

Open the overhead screen to use the system.

Pull down the bottom edge of the screen, and extend it until it locks into place.

Fold the screen back into the ceiling when not in use.

Press the release button to detach the remote control, if desired.

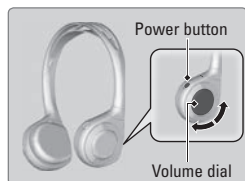


## Wireless Headphones

Your vehicle comes with two sets of wireless headphones.

Press the power button on the right earpiece to turn on the headphones.

Turn the dial on the right earpiece to adjust the volume.



## Auxiliary Console Panel

Multiple connection inputs are located on the back of the center console.

### HDMI input jack\*

The system accepts HDMI input from video game systems and other devices. Open the outlet cover and insert the cable.

### Auxiliary input jacks

The system accepts auxiliary inputs from standard video game systems and other devices.

### Headphone jacks

There are two headphone connectors for the rear entertainment system. Each connector has its own volume control.

### AC power outlet

The outlet can supply power for appliances up to 115 volts that are rated 150 watts or less.

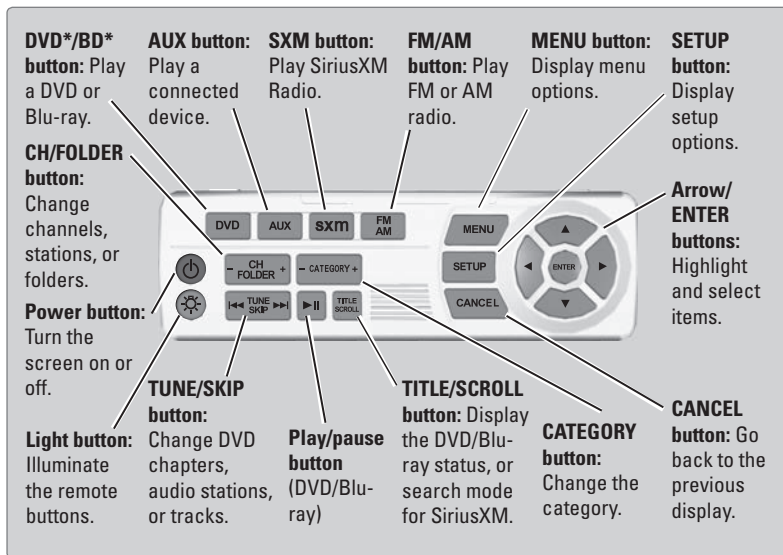
### USB ports\*

There are two USB ports that can be used to charge a device.



## Remote Control and Rear Operation

You can operate the system using the rear control panel.



1. Make sure the REAR POWER button is turned on in the front.
2. From the rear control panel, press the desired source button (DVD, AUX, etc.).
3. Press the arrow/ENTER buttons to highlight options on the screen and select them. Use the other rear control panel buttons to operate the system.