

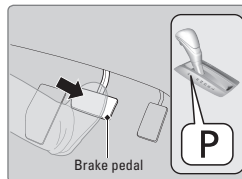
## Starting to Drive

Turn on the vehicle and start the power system to begin driving.

### ■ Before Starting the Power System

Check that the shift lever is in Park (P), then press the brake pedal. Keep your foot firmly on the brake pedal when starting the power system.

The power system is harder to start in cold weather and in thinner air found at altitudes above 8,000 feet (2,400 m). When starting the power system in cold weather, turn off all electrical accessories such as the lights, climate control system, and rear defogger in order to reduce battery drain.



### ⚠ WARNING

Removing the key from the ignition switch while driving locks the steering. This can cause you to lose control of the vehicle.

Remove the key from the ignition switch only when parked.

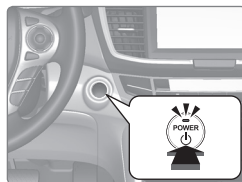
### ■ Changing the Power Mode

Use the POWER button to cycle through power modes or start the power system.

**Accessory or On mode:** Press the POWER button once without pressing the brake pedal for Accessory mode. Press it again for On mode.

**Starting the power system:** Press and hold the brake pedal, then press the POWER button. Keep your foot firmly on the brake pedal until the READY indicator comes on.

If you press the button and the shift lever is not in Park (P), the vehicle goes into Accessory mode.



**Turning the vehicle off:** Shift to Park (P), then press the POWER button.