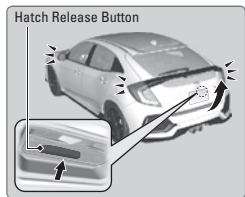


Smart Entry System*

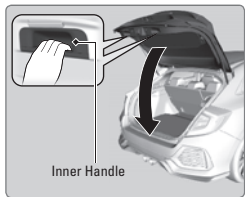
When you carry the remote transmitter (for example, in a pocket or purse) and it is outside the vehicle and within range (about 32 inches or 80 cm), you can lock or unlock the doors and hatch without handling the transmitter.

■ Opening/Closing the Hatch

To open: Press the hatch release button to unlock and open the hatch.



To close: Grab the inner handle to pull the hatch down, then push it closed from the outside.



**if equipped*

Door Operation

Use several methods to lock or unlock the doors.

■ Using the Hatch

To unlock: Press the hatch release button. This method works if all the doors are unlocked or you've pressed the hatch-unlock button on the remote transmitter.

To lock: Grab the inner handle and pull down. Then push from the outside.

