

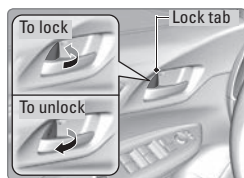
Door Operation

Use several methods to lock or unlock the doors.

Using the Lock Tab

To unlock: Pull the lock tab rearward. When you unlock the door using the lock tab on the driver's door, only the driver's door unlocks.

To lock: Push the lock tab forward. When you lock the door using the lock tab on the driver's door, all other doors and the tailgate lock.



Using the Front Door Inner Handle

When you pull either front door inner handle, the door unlocks and opens.

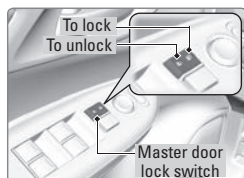
Unlocking and opening the driver's door from the inner handle unlocks all the other doors.



Using the Master Door Lock Switch

To unlock: Press the unlock side of the switch to unlock all doors and the tailgate.

To lock: Press the lock side of the switch to lock all doors and the tailgate.



You can use the master door lock switch to customize the door locking and unlocking settings. See the Owner's Manual on the Owner Information CD or at owners.honda.com for instructions.

Childproof Door Locks

The childproof door locks prevent the rear doors from being opened from the inside, regardless of the position of the lock tab.

Slide the lever in the rear door to the lock position, and close the door.

Open the door using the outer door handle.

