

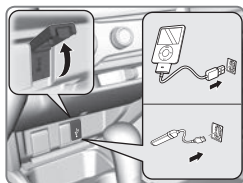
Basic Audio Operation

Connect audio devices and operate buttons and displays for the audio system.

■ USB Port

1. Open the USB cover in the front console.
2. Insert a USB flash drive or other audio device, such as an iPod® or iPhone®, into the USB port.

An additional USB port is located inside the center console.*

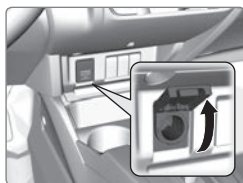


iPod and iPhone are trademarks of Apple, Inc. State, provincial, or local laws may prohibit the operation of handheld electronic devices while operating a vehicle.

■ Accessory Power Socket

Open the socket cover in the front console to use power when the vehicle is on.

An additional power socket is located inside the center console.*



NOTICE

Do not insert an automotive type cigarette lighter element. This can overheat the power socket.

■ HDMI Port*

1. Open the HDMI cover in the front console.
2. Insert an HDMI cable into the HDMI port.



Additional cables and connectors sold separately.

**if equipped*

■ Auxiliary Input Jack*

Connect standard audio devices with a 1/8-inch (3.5 mm) stereo miniplug.

1. Open the AUX cover in the front console.
2. Insert the miniplug attached to the audio device into the jack. The audio system switches to AUX mode. Use the device to control the audio.

