

AUDIO AND CONNECTIVITY

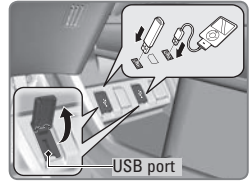
Learn how to operate the vehicle's audio system.

Basic Audio Operation

Connect audio devices and operate buttons and displays for the audio system.

■ USB Port

1. Open one of the USB covers under the front console.
2. Insert a USB flash drive or other audio device, such as an iPod or iPhone®, into the USB port.

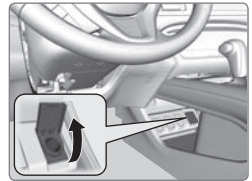


*iPod and iPhone are trademarks of Apple, Inc.
Applicable laws may prohibit the operation
of handheld electronic devices while operating a vehicle.*

■ Accessory Power Socket

Open the socket cover under the front console to use power when the vehicle is on.

Additional power sockets* are located on the back of the center console and the right side of the cargo area.

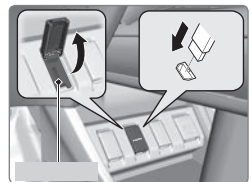


NOTICE

Do not insert an automotive type cigarette lighter element. This can overheat the power socket.

■ HDMI Port*

1. Open the HDMI cover under the front console.
2. Insert an HDMI cable to the HDMI port.

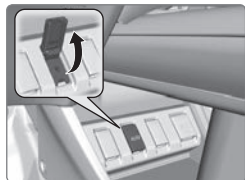


Additional cables and connectors sold separately.

■ Auxiliary Input Jack*

Connect standard audio devices with a 1/8-inch (3.5 mm) stereo miniplug.

1. Open the AUX cover under the front console.
2. Insert the miniplug attached to the audio device into the jack. The audio system switches to AUX mode. Use the device to control the audio.



■ Steering Wheel Controls

You can operate certain functions of the audio system using the steering wheel controls.

SOURCE button: Cycle through available audio modes.

◀/▶ buttons: Change presets, tracks, albums, or folders.

+/- buttons: Adjust audio volume.

MENU button*: From the audio screen, press and hold to choose options for the current audio mode (models with touchscreen). Use the +/- buttons and the SOURCE button to scroll and enter selections.



FM/AM/XM Radio

Press ◀ or ▶ for the next or previous station.

Press and hold ◀ or ▶ for the next or previous strong station.

CD/iPod/USB/Bluetooth Audio

Press ◀ or ▶ for the next or previous track.

Press and hold ◀ or ▶ for the next or previous folder (CD/USB).

Pandora

Press ▶ for the next song.

Press and hold ◀ or ▶ for the next or previous station.

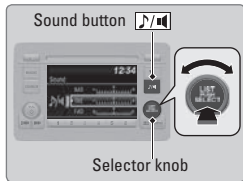
■ Adjusting the Sound

Adjust various sound settings.

Models with color audio system

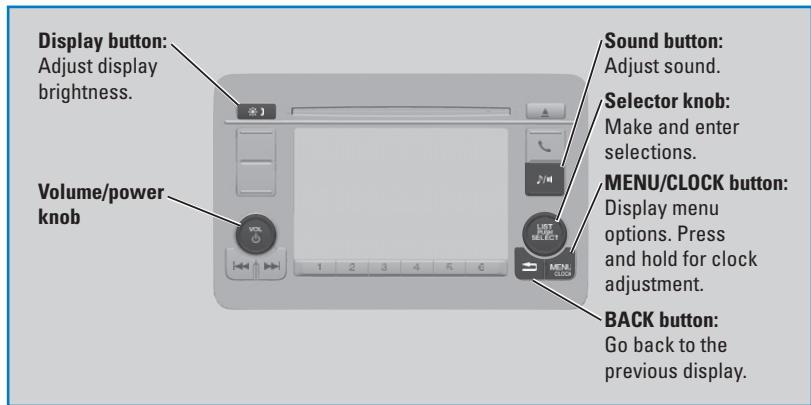
Use the selector knob to make and enter selections.

1. Press the Sound button.
2. Select a sound mode to change, and adjust it using the selector knob.
3. Press the Back button to exit the menu.



Color Audio System*

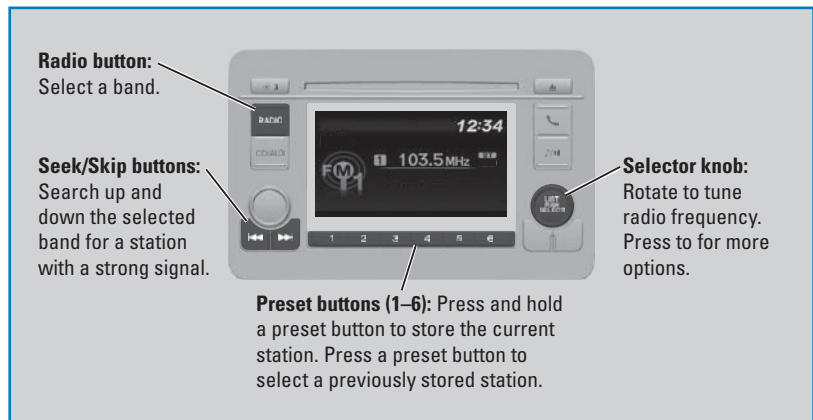
Use the buttons to control the display and audio system.



FM/AM Radio

Play FM or AM radio stations.

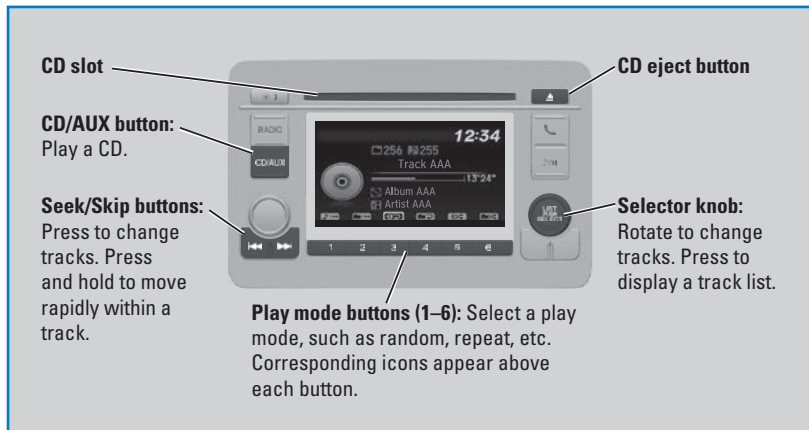
Models with color audio system



Compact Disc (CD)

The audio system supports audio CDs, CD-Rs, and CD-RWs in MP3, WMA, or AAC formats.

Models with color audio system



NOTICE

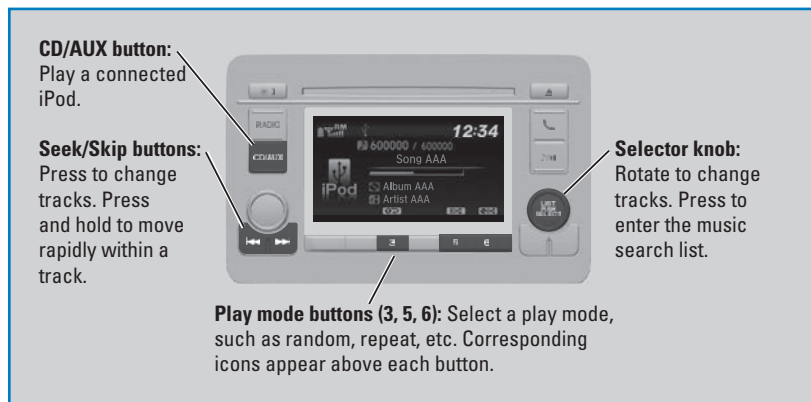
Do not use CDs with adhesive labels or insert a damaged CD. Inserting these types of CDs may cause them to get stuck or damage the audio unit.

iPod®

Play and operate an iPod through the vehicle's audio system.

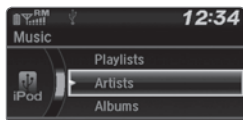
Models with color audio system

Connect your device.

**■ Searching for Music**

Use the selector knob to search for tracks stored on the iPod.

1. From the audio screen, press the selector knob.
2. Select a search option.
3. Select the track you want to play.

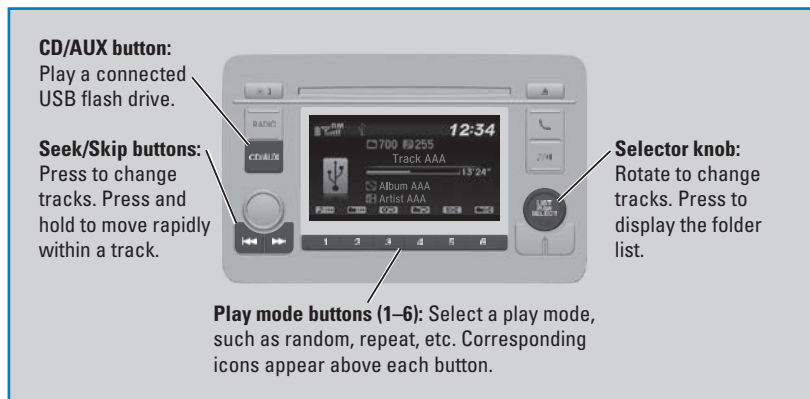


USB Flash Drive

Play and operate a USB flash drive through the vehicle's audio system.

Models with color audio system

Connect your device.



■ Searching for Music

Use the selector knob to search for tracks stored on the flash drive.

1. From the audio screen, press the selector knob.
2. Select a folder.
3. Select the track you want to play.

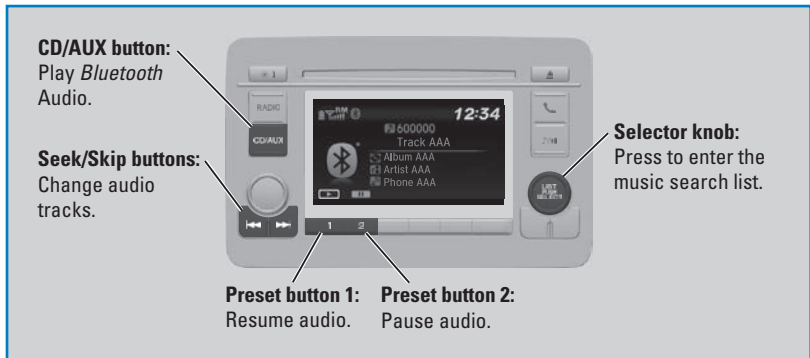


Bluetooth® Audio

Play streaming or stored audio from your compatible phone through the vehicle's audio system. Visit handsfreelink.com to check phone compatibility. Standard data rates apply.

Models with color audio system

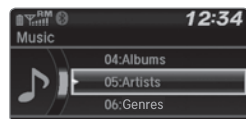
Connect your phone to *Bluetooth* HandsFreeLink.



■ Searching for Music

Use the selector knob to search for tracks stored on the device.

1. From the audio screen, press the selector knob.
2. Select a category.
3. Select the track you want to play.



Notes:

- Make sure the volume on your phone is properly adjusted.
- You may need to enable additional settings on your phone for playback.
- The resume/pause function and remote audio controls are not supported on all phones.

Applicable laws may prohibit the operation of handheld electronic devices while operating a vehicle. Launch streaming audio on your phone only when it is safe to do so.