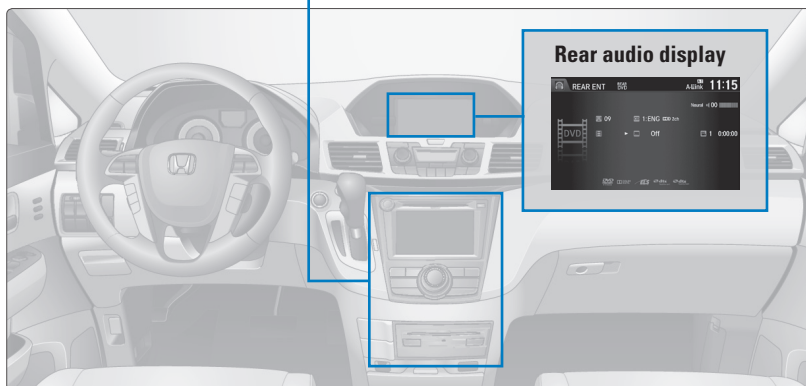
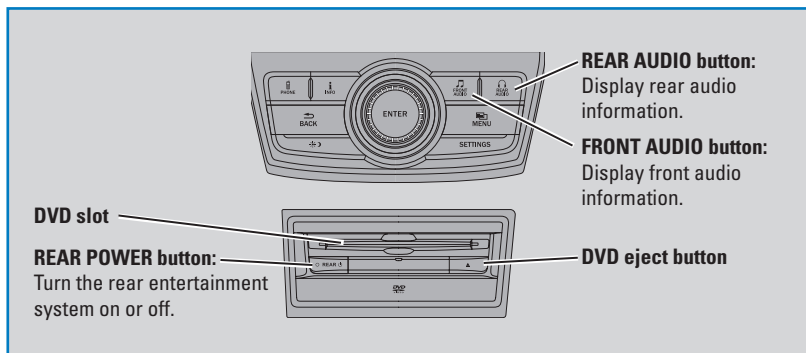


Rear Entertainment System (RES)*

Rear passengers can enjoy a different audio or entertainment source than front passengers.



■ Operating the System from the Front

You can operate the rear entertainment system using the front audio controls.

1. Press REAR POWER to turn the system on.
2. Press REAR AUDIO.
3. Use the front audio controls to choose a media source for the rear system.
4. Press FRONT AUDIO to return to the front audio source.

■ Playing a DVD

Insert a DVD into the DVD slot. It begins playing automatically. Use the front or rear controls to navigate the DVD.

■ System Components

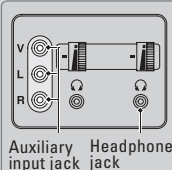
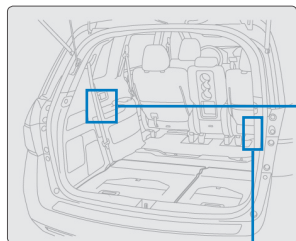
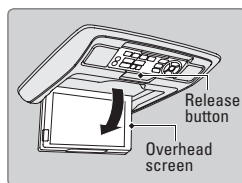
Open the overhead screen to use the system.

9-inch screen*: Pull down the bottom edge of the screen, and extend it until it locks into place.

Ultrawide screen*: Press OPEN. Extend the screen until it locks into place.

Fold the screen back into the ceiling when not in use.

Press the release button to detach the rear control panel, if desired.



Auxiliary inputs can be used for video game systems and other devices.

Wired headphones can also be used.



Ultrawide RES*

HDMI input can be used for video game systems and other devices.

NOTICE

This vehicle's overhead mounted display includes mercury-containing components. Upon removal or replacement, please reuse, recycle, or dispose of as hazardous waste.

■ Wireless Headphones

Your vehicle comes with two sets of wireless headphones.

Pivot the left earpiece to turn on the headphones.

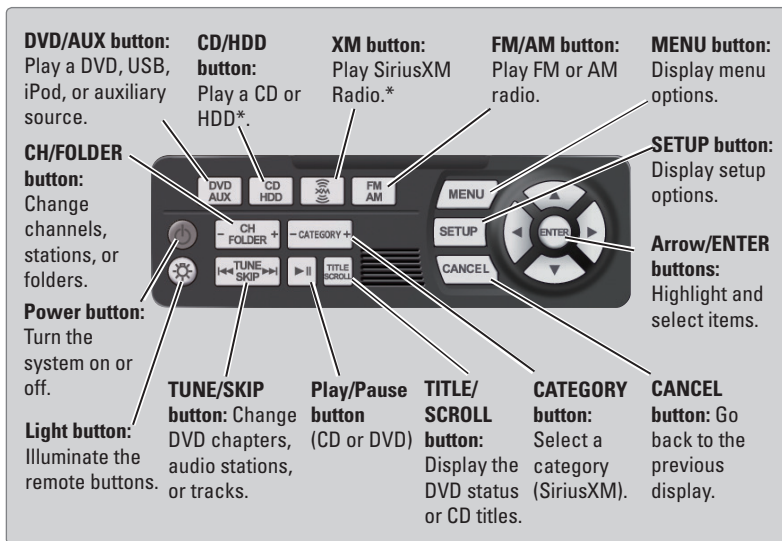
Turn the dial at the bottom of the right earpiece to adjust the volume.



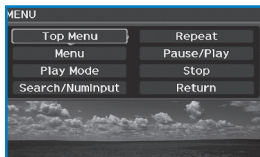
**if equipped*

Remote Control and Rear Operation

You can operate the system using the rear control panel.

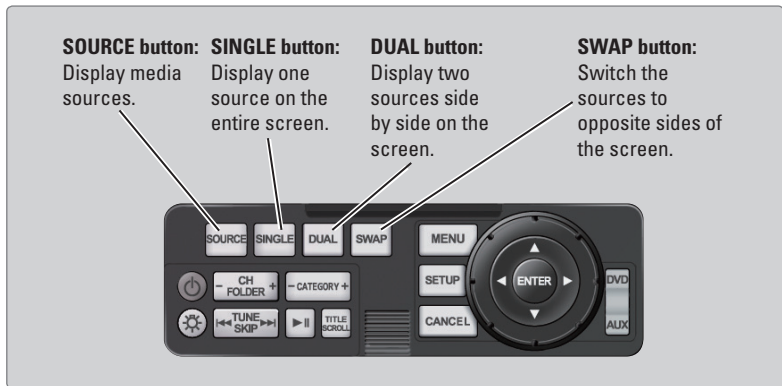


1. Make sure REAR POWER is turned on in the front audio controls.
2. From the rear control panel, press the desired audio source button (or the SOURCE button for Ultrawide RES*).
3. Press the arrow/ENTER buttons to highlight options on the screen and select them. Use the other rear control panel buttons to operate the system.



■ Ultrawide Dual Screen Operation*

Play two different sources side by side on the ultrawide screen. One side of the screen can play a source from the front audio system (FM, DVD, etc.). The other side of the screen can play a connected device, such as a video game system.



1. Connect a second source through the rear auxiliary or HDMI input.
2. From the rear control panel, press DUAL.
3. Select which side the second source plays on.
4. Press SOURCE to select AUX-VIDEO or AUX-HDMI.

**if equipped*