

Road Departure Mitigation (RDM)*

Alerts and helps to assist you if the system determines a possibility of your vehicle unintentionally crossing over detected lane markings and/or leaving the roadway altogether while driving between 45-90 mph (72-145km/h).

■ How the System Works

If your vehicle is getting too close to detected lane markings without a turn signal activated, the system, in addition to a visual alert, applies steering torque and alerts you with rapid vibrations on the steering wheel, to help you remain within the detected lane.

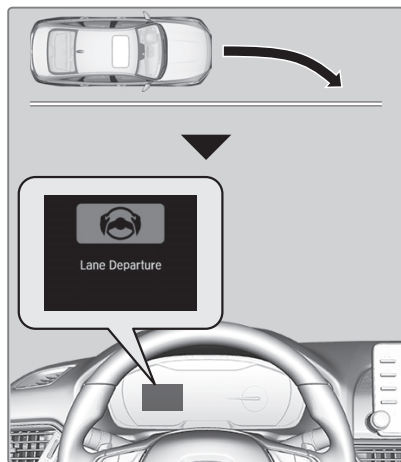
As a visual alert, the **Lane Departure** message appears on the driver information interface.

If the system determines that its steering input is insufficient to keep your vehicle on the roadway, it may apply braking.

The system cancels assisting operations when you turn the steering wheel to avoid crossing over detected lane markings.

If the system operates several times without detecting driver response, the system beeps to alert you.

If LKAS is off and you have selected Narrow from the customized options using the audio/information screen, the message shown will appear in case the system determines a possibility of your vehicle crossing over detected lane markings.



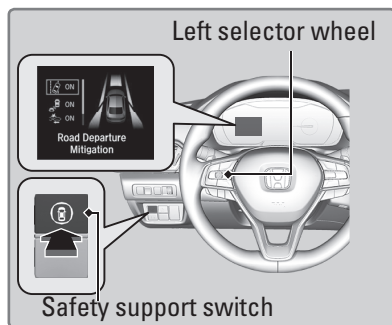
**if equipped*

■ Turning the System On or Off

Press the safety support switch. Roll the left selector wheel to the RDM symbol and push it.

The message appears on the driver information interface when the system becomes on or off.

The RDM is in the previously selected **ON** or **OFF** setting each time you start the power system.



■ Changing Settings

Determine the warning timing. The vehicle must be in Park (P) with the power mode in **ON**.

Models with Color Audio

1. Press the **MENU/CLOCK** button, then select **Settings**.
2. Select **Vehicle Settings**.
3. Select **Driver Assist System Setup**.
4. Select **Road Departure Mitigation Setting**.
5. Select from the options.

Normal (default): Steering control starts from inside the lane edge.

Wide: Steering control starts from outside the lane edge.

Warning Only: The system only provides a **BRAKE** message, but does not apply steering or braking.

Narrow: Use for driving on narrow roads.

Models with Display Audio

1. Press the **HOME** button, then select **Settings**.
2. Select **Vehicle**.
3. Select **Driver Assist System Setup**.
4. Select **Road Departure Mitigation Setting**.
5. Select from the options.

Normal (default): Steering control starts from inside the lane edge.

Wide: Steering control starts from outside the lane edge.

Warning Only: The system only provides a **BRAKE** message, but does not apply steering or braking.

Narrow: Use for driving on narrow roads.

Important Safety Reminder

Like all assistance systems, the RDM system has limitations.

Over-reliance on the RDM system may result in a collision. It is always your responsibility to keep the vehicle within your driving lane.

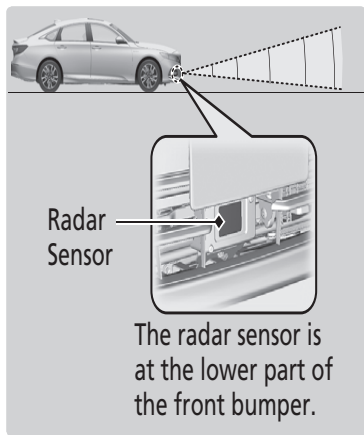
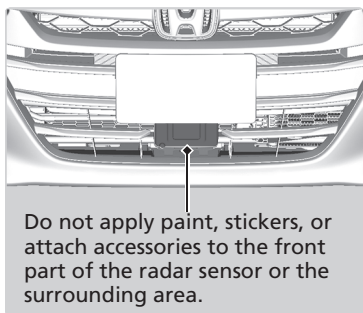
The RDM system only alerts you when lane drift is detected without a turn signal in use. The RDM system may not detect all lane markings or lane or roadway departures; accuracy will vary based on weather, speed and lane marker condition. It is always your responsibility to safely operate the vehicle and avoid collisions.

**if equipped*

Honda Sensing™

Honda Sensing is a driver support system which employs the use of two distinctly different kinds of sensors, a radar sensor located at the lower part of the front bumper and a front sensor camera mounted to the interior side of the windshield, behind the rearview mirror.

- Do not change the position of the radar sensor or any of the surrounding parts.
- Do not apply paint, stickers, or attach nongenuine accessories to the front part of the radar sensor or the surrounding area.
- Be particularly careful that any custom license plate frame or other accessory does not block any part of the radar beam path (see illustration below).



Honda Sensing™ has following functions:

Adaptive Cruise Control (ACC) with Low Speed Follow (LSF): Helps maintain a constant vehicle speed and a set following interval behind a vehicle detected ahead of yours and, if the detected vehicle comes to a stop, can decelerate and stop your vehicle.

Lane Keeping Assist System (LKAS): Provides steering input to help keep the vehicle in the middle of a detected lane and provides tactile and visual alerts if the vehicle is detected drifting out of its lane.

Traffic Sign Recognition System: Reminds you of road sign information, such as the current speed limit and that overtaking is prohibited.

Road Departure Mitigation (RDM) System: Alerts and helps to assist you when the system detects a possibility of your vehicle unintentionally crossing over detected lane markings and/or leaving the roadway altogether.

Collision Mitigation Braking System™ (CMBS™): Can assist you when there is a possibility of your vehicle colliding with a vehicle or a pedestrian detected in front of yours.