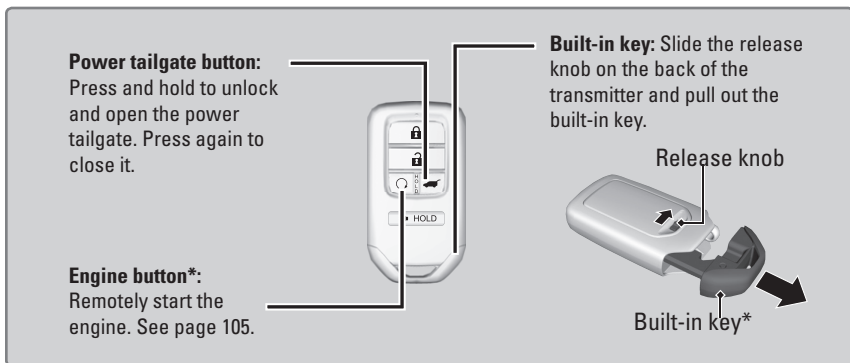
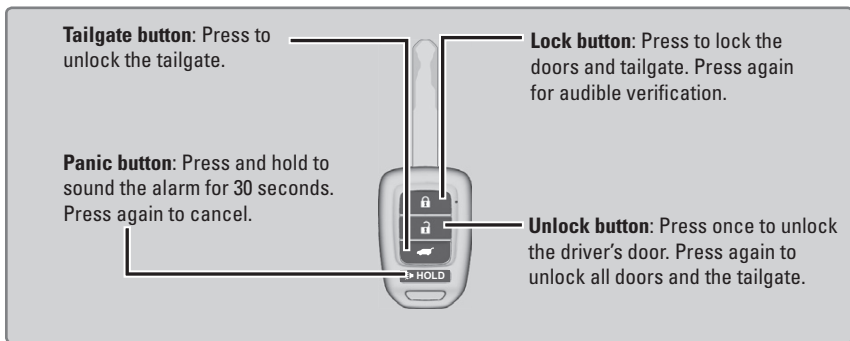


VEHICLE CONTROLS

Learn about the various controls necessary for operating and driving the vehicle.

Using the Key or Remote Transmitter

Lock or unlock the doors and tailgate.



NOTICE

Leaving the key or remote transmitter in the vehicle can result in theft or accidental movement of the vehicle. Always take it with you whenever you leave the vehicle unattended.

**if equipped*

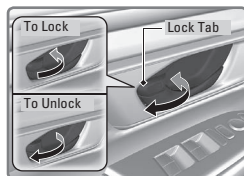
Door Operation

Use several methods to lock or unlock the doors.

■ Using the Lock Tab

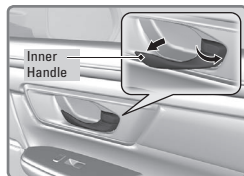
To unlock: Pull the lock tab rearward. When you unlock the door using the lock tab on the driver's door, only the driver's door unlocks.

To lock: Push the lock tab forward. When you lock the door using the lock tab on the driver's door, all other doors and the tailgate lock.



■ Using the Front Door Inner Handle

When you pull either front door inner handle, the door unlocks and opens.

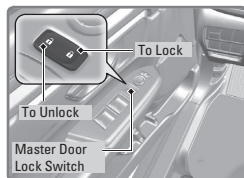


■ Using the Master Door Lock Switch

To unlock: Press the unlock side of the switch to unlock all doors and the tailgate.

To lock: Press the lock side of the switch to lock all doors and the tailgate.

The front passenger's door also has the master door lock switch.



■ Childproof Door Locks

The childproof door locks prevent the rear doors from being opened from the inside, regardless of the position of the lock tab.

Slide the lever in the rear door to the lock position, and close the door.

Open the door using the outer door handle.

