

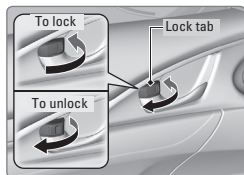
Door Operation

Use several methods to lock or unlock the doors.

■ Using the Lock Tab

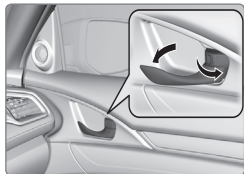
To unlock: Pull the lock tab rearward. When you unlock the door using the lock tab on the driver's door, the other door unlocks.

To lock: Push the lock tab forward. When you lock the door using the lock tab on the driver's door, the other door locks at the same time.



■ Using the Door Inner Handle

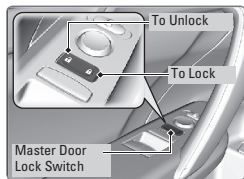
When you pull a door inner handle, the door unlocks and opens. Unlocking and opening the driver's door from the inner handle unlocks the other door.



■ Using the Master Door Lock Switch

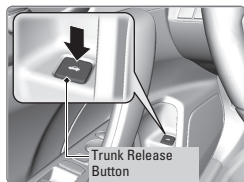
To unlock: Press the unlock side of the switch to unlock both doors.

To lock: Press the lock side of the switch to lock both doors.



■ Using the Trunk Opener

Press the trunk opener on the driver's door to open the trunk.



■ Customizing Door Lock Settings

Customize the auto door-lock setting to your preference. Begin with the vehicle off.

Models with information display and continuously variable transmission

1.	Apply the parking brake	
2.	Position the driver's door	
	<i>To enable auto door lock:</i> Move the shift lever out of Park (P), then close the driver's door	<i>To disable auto door lock:</i> Move the shift lever to Park (P), then open the driver's door
3.	Set your preference	
	Models with key ignition	Models with Smart Entry
	a. Set the ignition switch to ON	a. Push ENGINE START/STOP twice (do not press the brake pedal)
	b. Press and hold the lock side of the master door lock switch until you hear a click (~ 5 sec.)	b. Press and hold the lock side of the master door lock switch until you hear a click (~ 5 sec.)
	c. Set the ignition switch to ACC	c. Push ENGINE START/STOP twice (do not press the brake pedal)

Models with Driver Information Interface

Follow the steps below when the vehicle is stopped and the power mode is ON.

Auto Door Lock Choices

With Vehicle Speed

Shift from Park

Off

Auto Door Unlock Choices

All Doors When Driver's Door Opens

All Doors When Shifted to Park

All Doors When Ignition Switched Off

Off

- From the home screen, press Settings.
- Press Vehicle.
- Press Door/Window Setup:
 - To customize door lock settings, press Auto Door Lock.
 - To customize door unlock settings, press Auto Door Unlock.
- Choose a setting:
 - The default lock setting is With Vehicle Speed, unless you have a CVT, for which the default is Shift from Park (P).
 - The default unlock setting is All Doors when Driver's Door Opens, unless you have a CVT, for which the default is All Door When Shifted to Park (P).
- Press BACK when you are done.