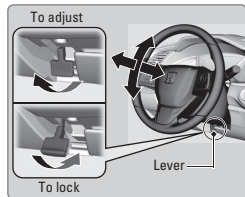


### Adjusting the Steering Wheel

The steering wheel height and distance from your body can be adjusted so that you can comfortably grip the steering wheel in an appropriate driving posture.

- Pull up the steering wheel adjustment lever.
- Move the steering wheel up or down, and in or out.
- Push down the steering wheel adjustment lever to lock the steering wheel in position.



### **⚠ WARNING**

Adjusting the steering wheel position while driving may cause you to lose control of the vehicle and be seriously injured in a crash.

Adjust the steering wheel only when the vehicle is stopped.